

THIS MAP WAS PREPARED FOR ASSESSMENT PURPOSE ONLY.

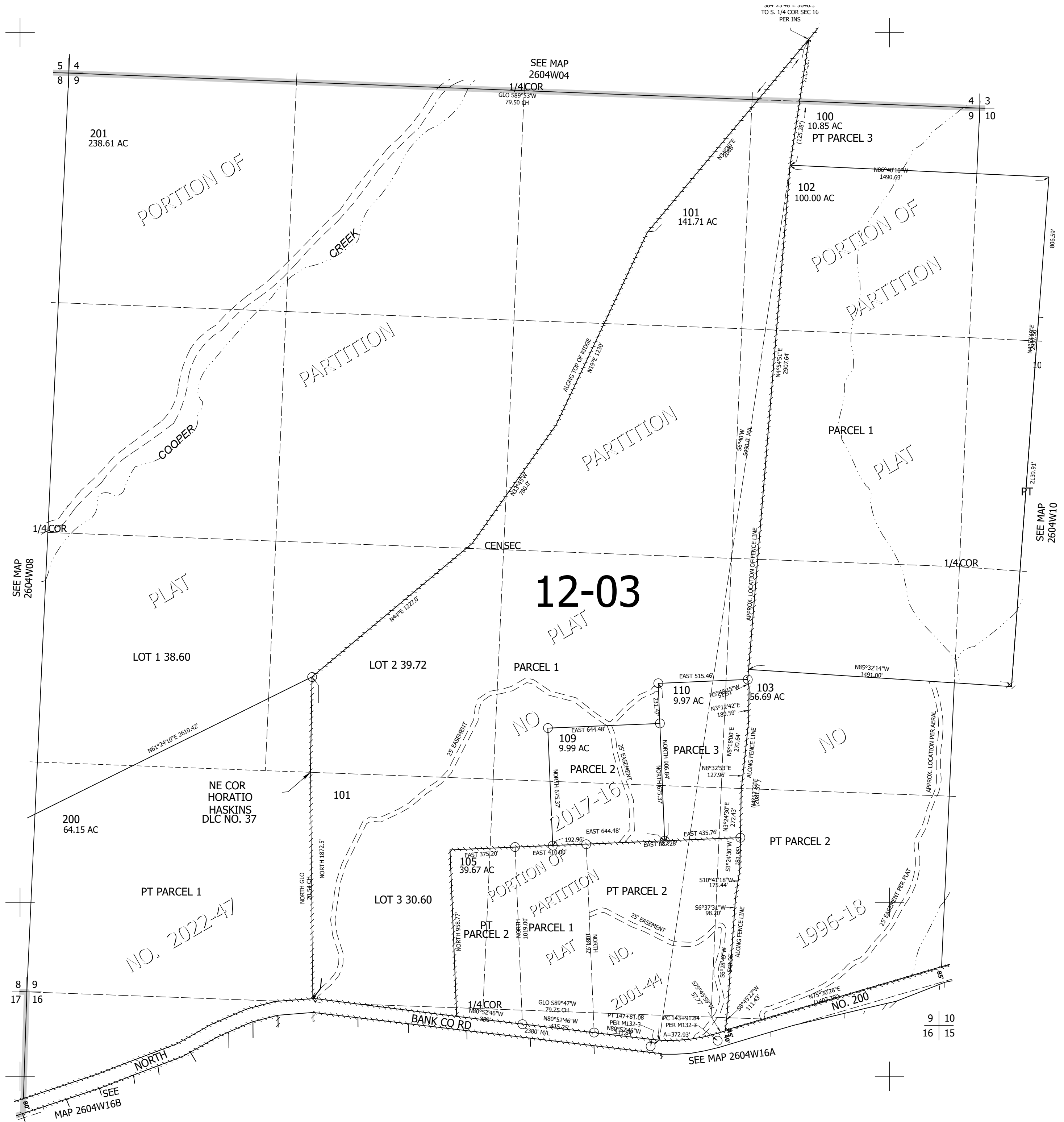
Upper Left:
123°11'32"W 43°19'55"N
4205084E 618451N ft

SEC.09 T.26S. R.04W. W.M.
DOUGLAS COUNTY
1" = 400'

Date Exported: 12/21/2022 8:00 AM

260409 &

CANCELLED NOS:
104 106 107
108



SEE MAP 2604W16B

SEE MAP 2604W16A

SEE MAP 2604W10

12-03
PLAT

NO. 2022-47

2017-16

2001-44

1996-18

NO. 200

Lower Right:
123°9'45"W 43°18'48"N
4212837E 611429N ft

260409 &