

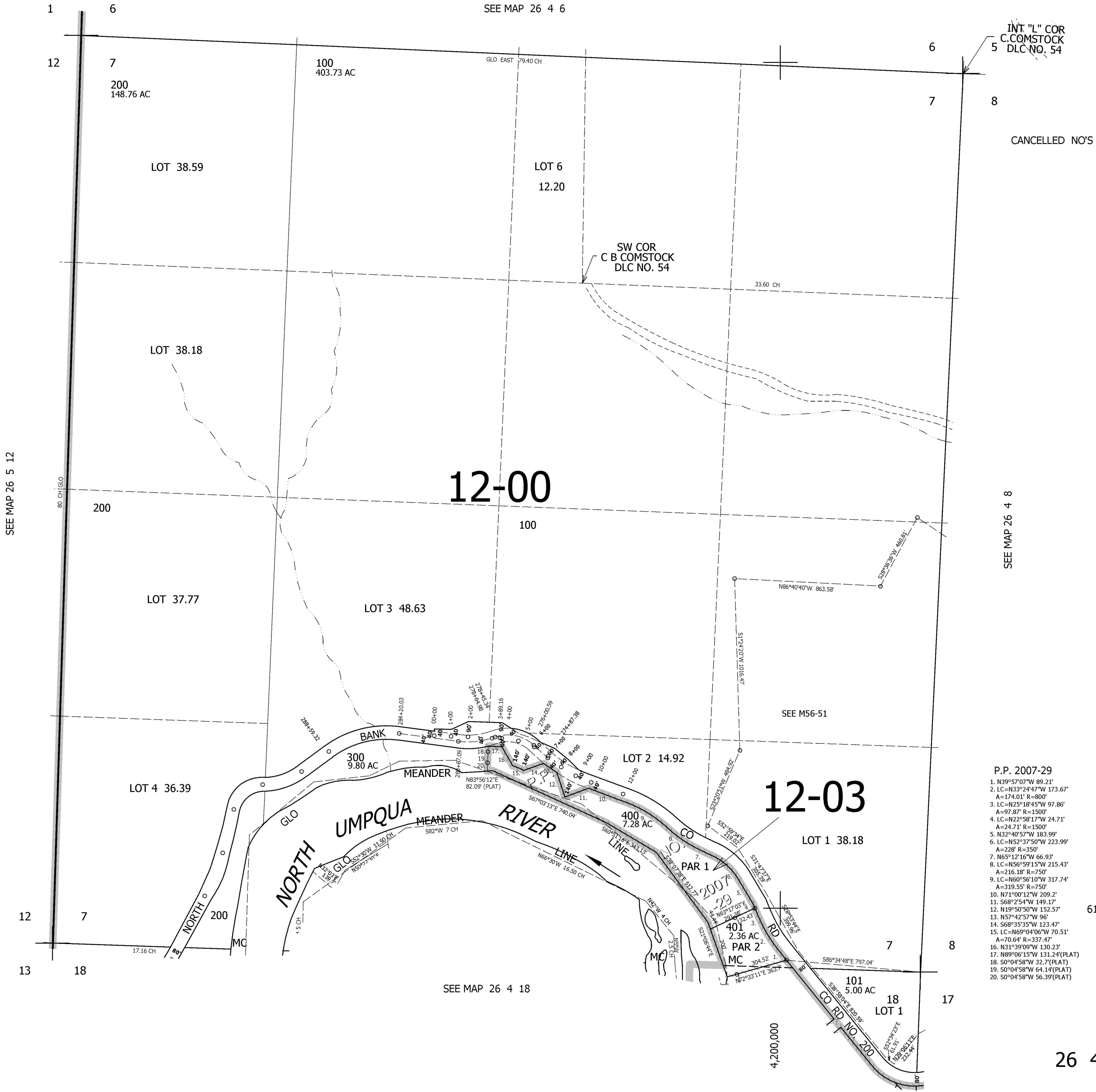
THIS MAP WAS PREPARED FOR ASSESSMENT PURPOSE ONLY.

SEC.7 T.26S. R.4W. W.M. DOUGLAS COUNTY

1" = 400'

REVISED ON
8-17-09

26 4 7



INT "L" COR
C.COMSTOCK
DLC NO. 54

SW COR
C B COMSTOCK
DLC NO. 54

CANCELLED NO'S

12-00

12-03

- P.P. 2007-29
- N39°57'07"W 89.21'
 - LC=N33°24'47"W 173.67'
A=174.01' R=800'
 - LC=N25°18'45"W 97.86'
A=97.87' R=1500'
 - LC=N22°58'17"W 24.71'
A=24.71' R=1500'
 - N32°40'57"W 183.99'
A=228' R=350'
 - LC=N52°37'50"W 223.99'
A=228' R=350'
 - N65°12'16"W 66.93'
 - LC=N56°59'15"W 215.43'
A=216.18' R=750'
 - LC=N60°56'10"W 317.74'
A=319.55' R=750'
 - N71°00'12"W 209.2'
 - S68°25'54"W 149.17'
 - N15°50'50"W 152.57'
 - N57°42'57"W 96'
 - S68°35'35"W 123.47'
 - LC=N69°04'06"W 70.51'
A=70.64' R=337.47'
 - N31°39'09"W 130.23'
 - N89°06'15"W 131.24'(PLAT)
 - S0°04'58"W 32.7'(PLAT)
 - S0°04'58"W 64.14'(PLAT)
 - S0°04'58"W 56.39'(PLAT)

613,000

26 4 7