

THIS MAP WAS PREPARED FOR ASSESSMENT PURPOSE ONLY.

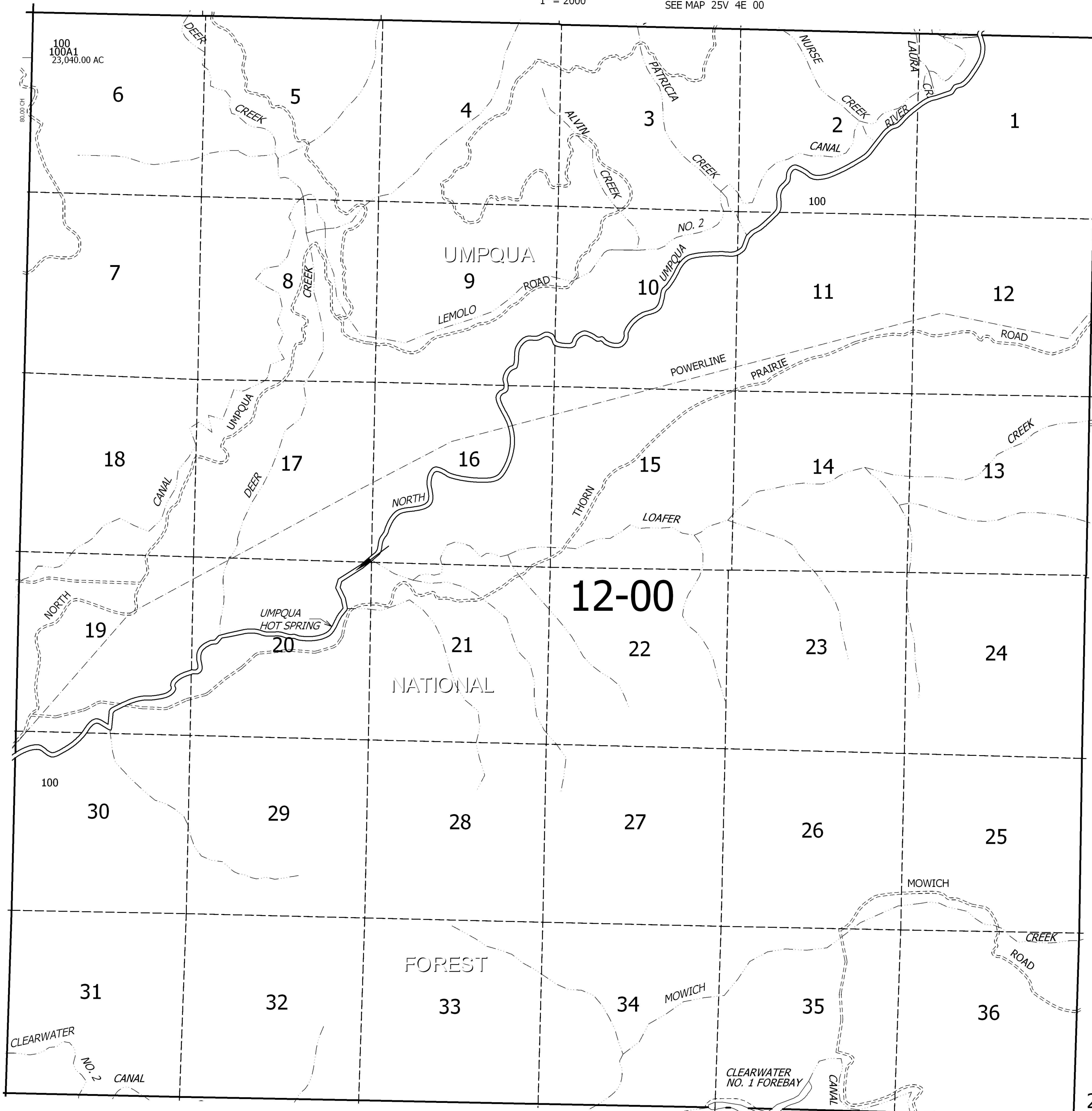
T.26S. R.4E. W.M.
DOUGLAS COUNTY

REVISED ON
8-11-10

26 4E 00

1" = 2000'

SEE MAP 25V 4E 00



CANCELLED NO'S

SEE MAP 26 3E 00

SEE MAP 26 5E 00

SEE MAP 27 4E 00

26 4E 00