

THIS MAP WAS PREPARED FOR ASSESSMENT PURPOSE ONLY.

SE1/4 SEC.34 T.26S. R.3W. W.M.
DOUGLAS COUNTY

1" = 200'

REVISED ON
7-20-20

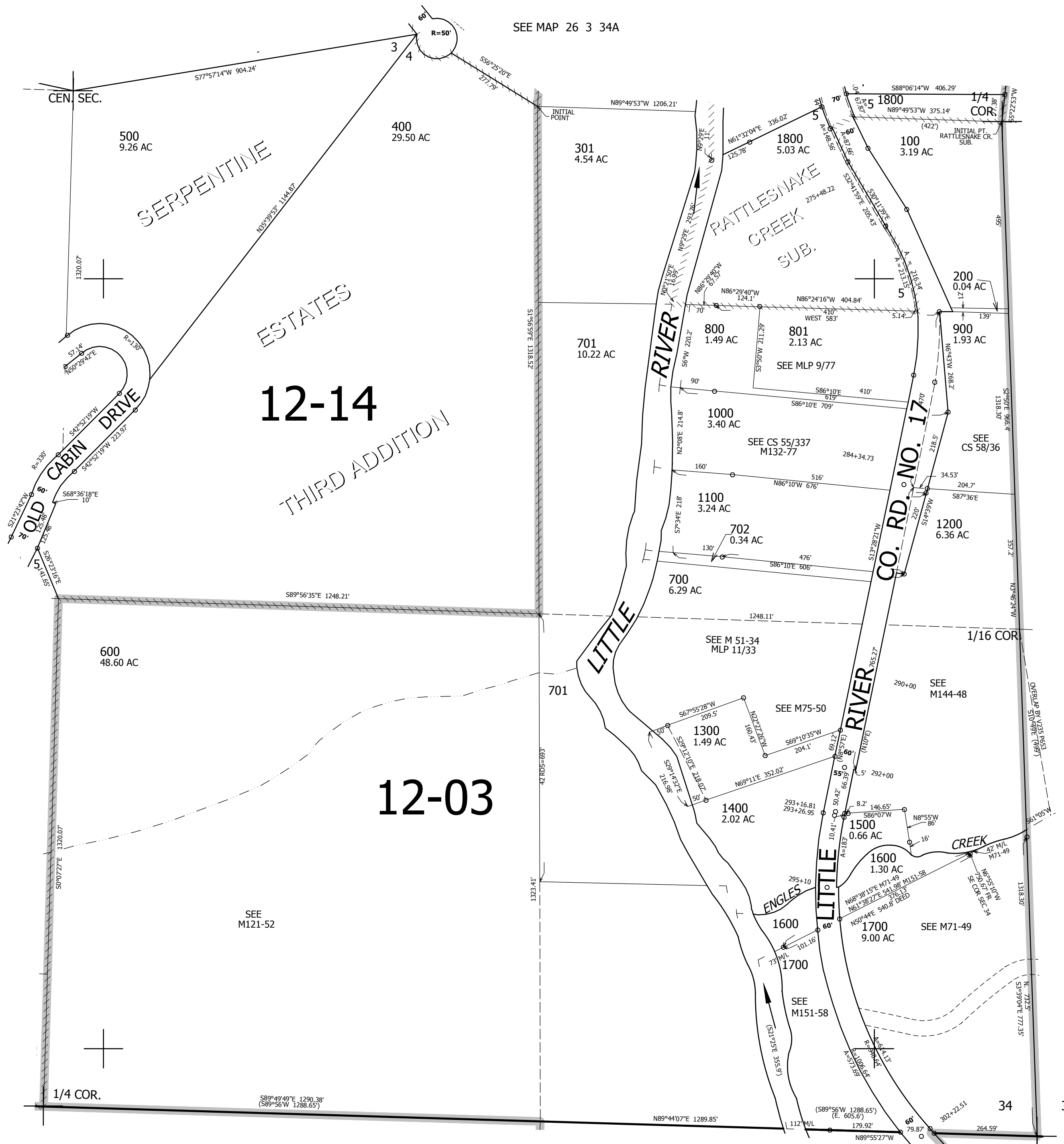
26 3 34D

SEE MAP 26 3 34A

CANCELLED NO'S
300

SEE MAP 26 3 34C

SEE MAP 26 3 00



590,000

SEE MAP 27 3 3

4,247,000

26 3 34D