

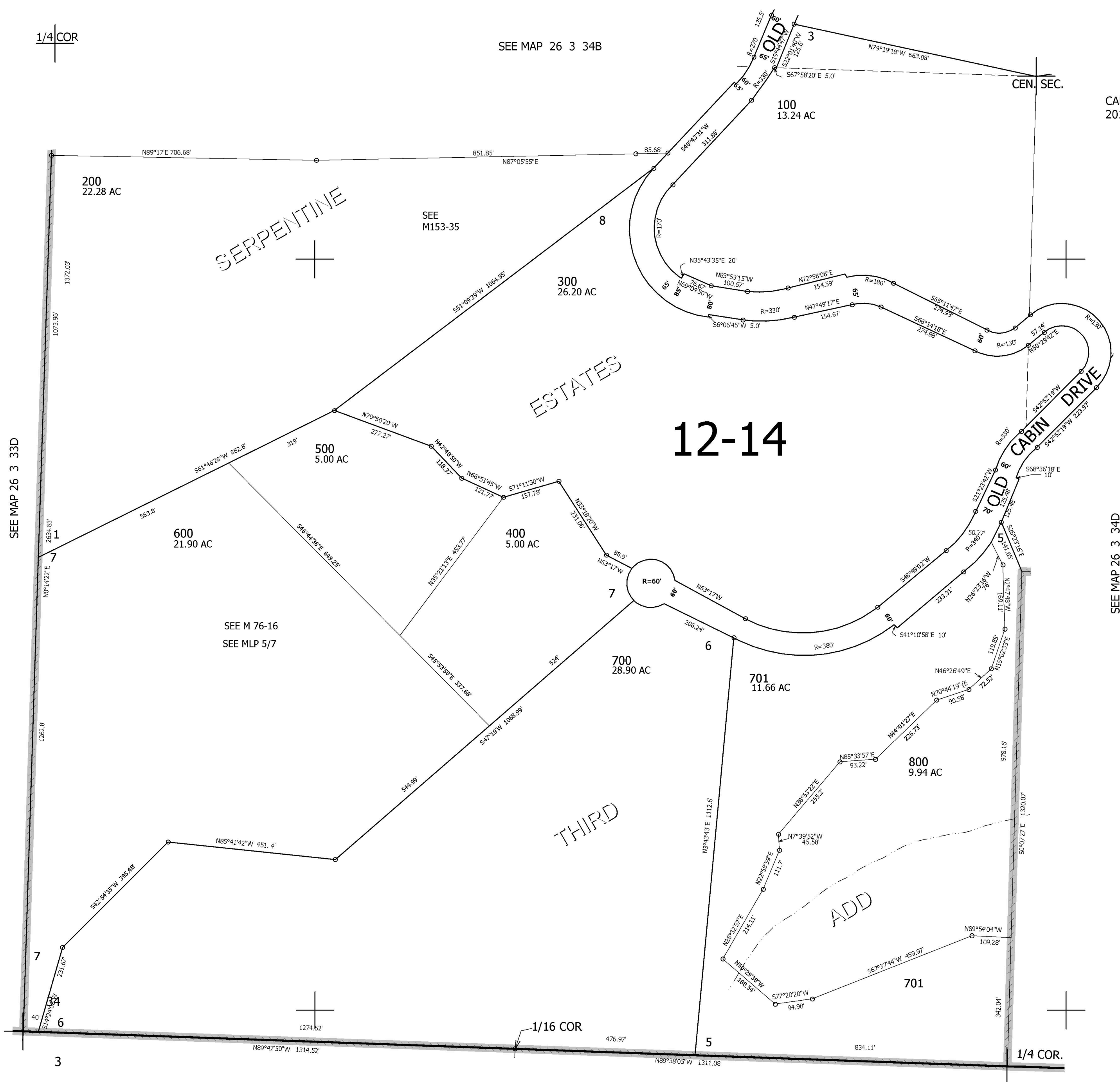
THIS MAP WAS PREPARED FOR ASSESSMENT PURPOSE ONLY.

# SW1/4 SEC.34 T.26S. R.3W. W.M. DOUGLAS COUNTY

REVISED ON 11-25-08

26 3 34C

1" = 200'



CANCELLED NO'S 201

SEE MAP 26 3 34D

SEE MAP 26 3 33D

SEE MAP 26 3 34B

SEE MAP 27 3 3

590,000

4,243,000

26 3 34C