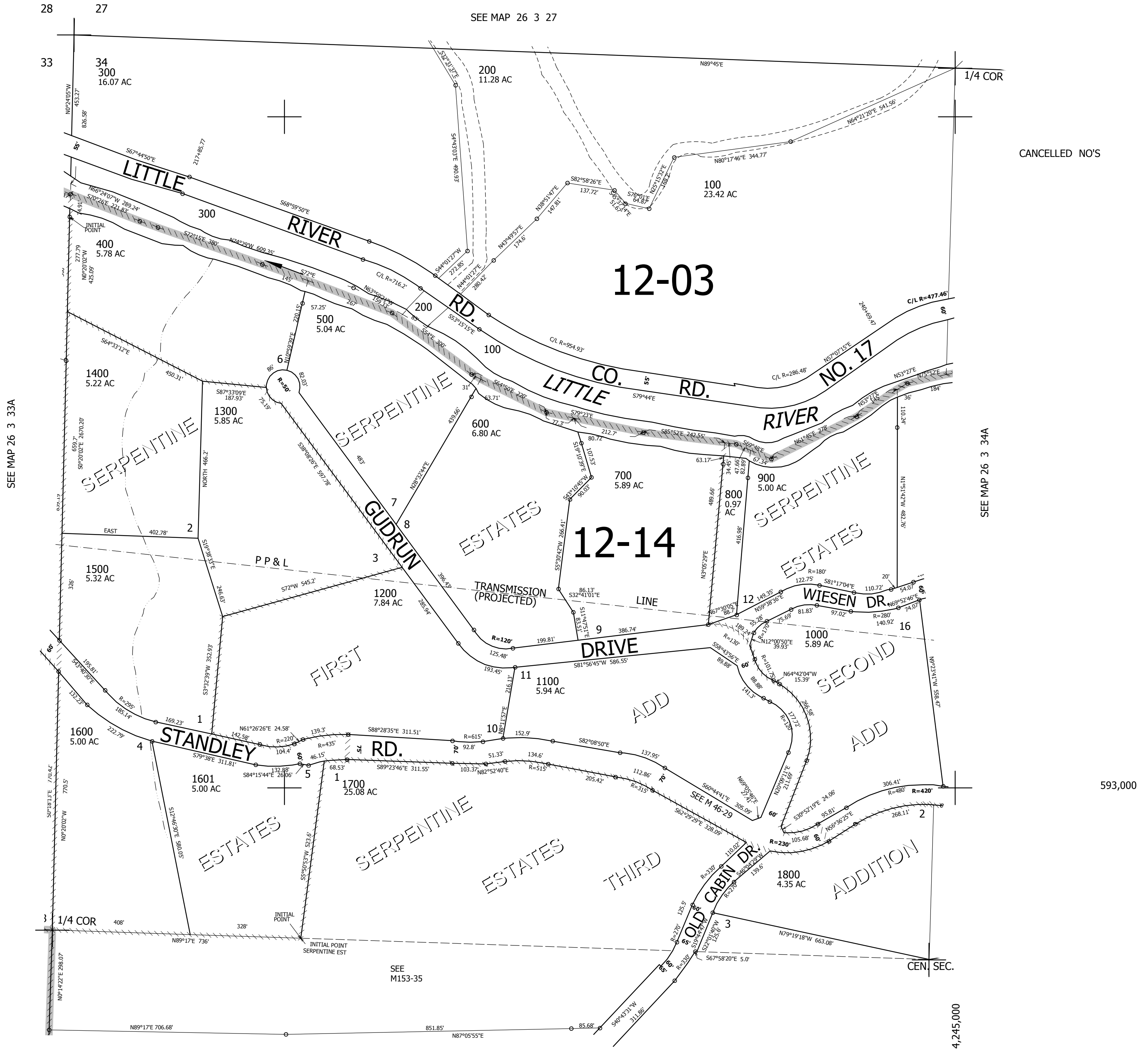


THIS MAP WAS PREPARED FOR ASSESSMENT PURPOSE ONLY.

NW1/4 SEC.34 T.26S. R.3W. W.M.
DOUGLAS COUNTY
1" = 200'

REVISED ON
4-18-16

26 3 34B



SEE MAP 26 3 27

SEE MAP 26 3 33A

SEE MAP 26 3 34A

SEE MAP 26 3 34C

SEE M153-35

4,245,000

593,000

CANCELLED NO'S

26 3 34B