

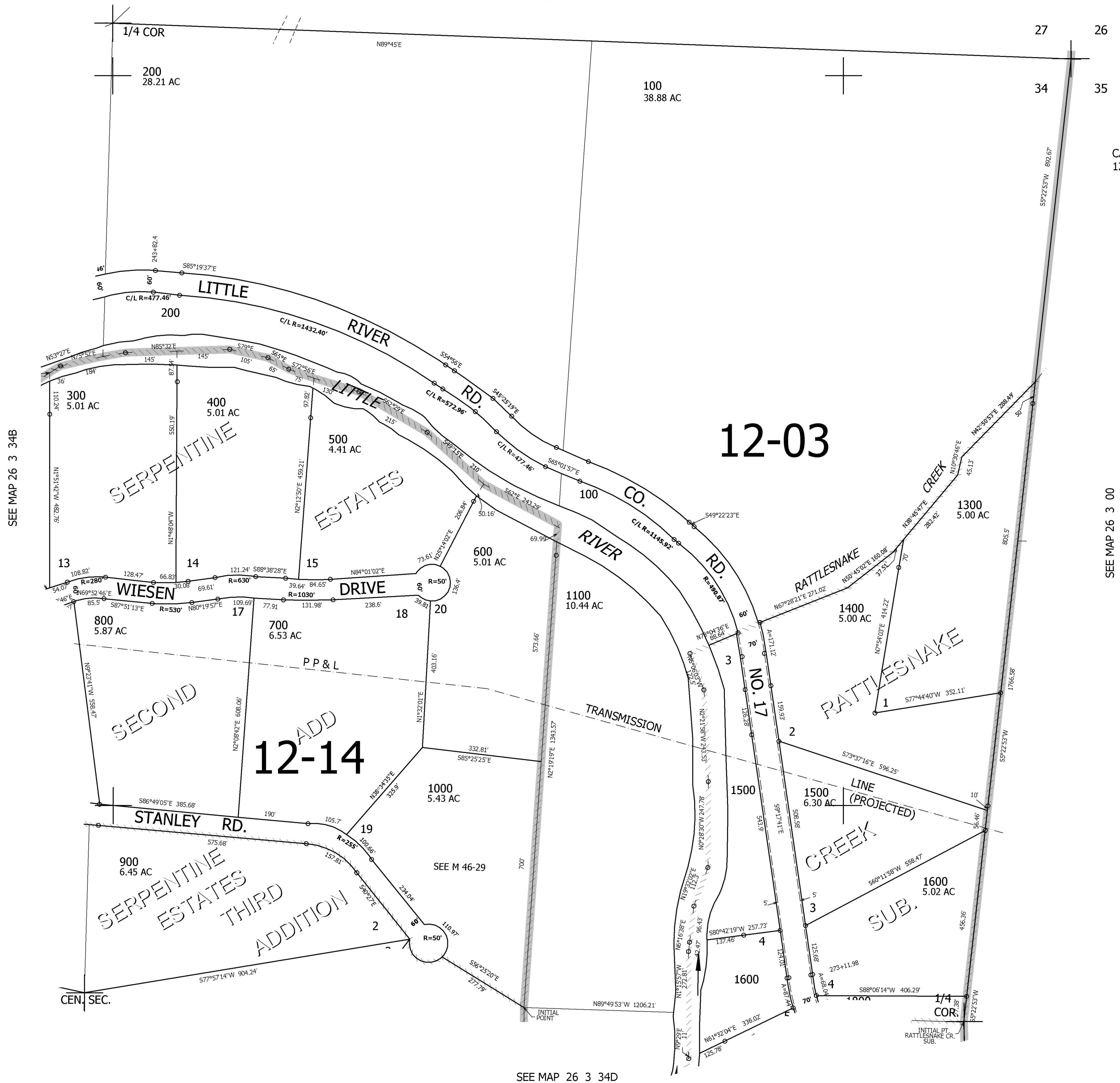
THIS MAP WAS PREPARED FOR ASSESSMENT PURPOSE ONLY.

NE1/4 SEC.34 T.26S. R.3W. W.M.  
DOUGLAS COUNTY  
1" = 200'

REVISED ON  
3-13-97

26 3 34A

SEE MAP 26 3 27



CANCELLED NO'S  
1200

SEE MAP 26 3 34B

SEE MAP 26 3 00

593,000

SEE MAP 26 3 34D

4,247,000

26 3 34A