

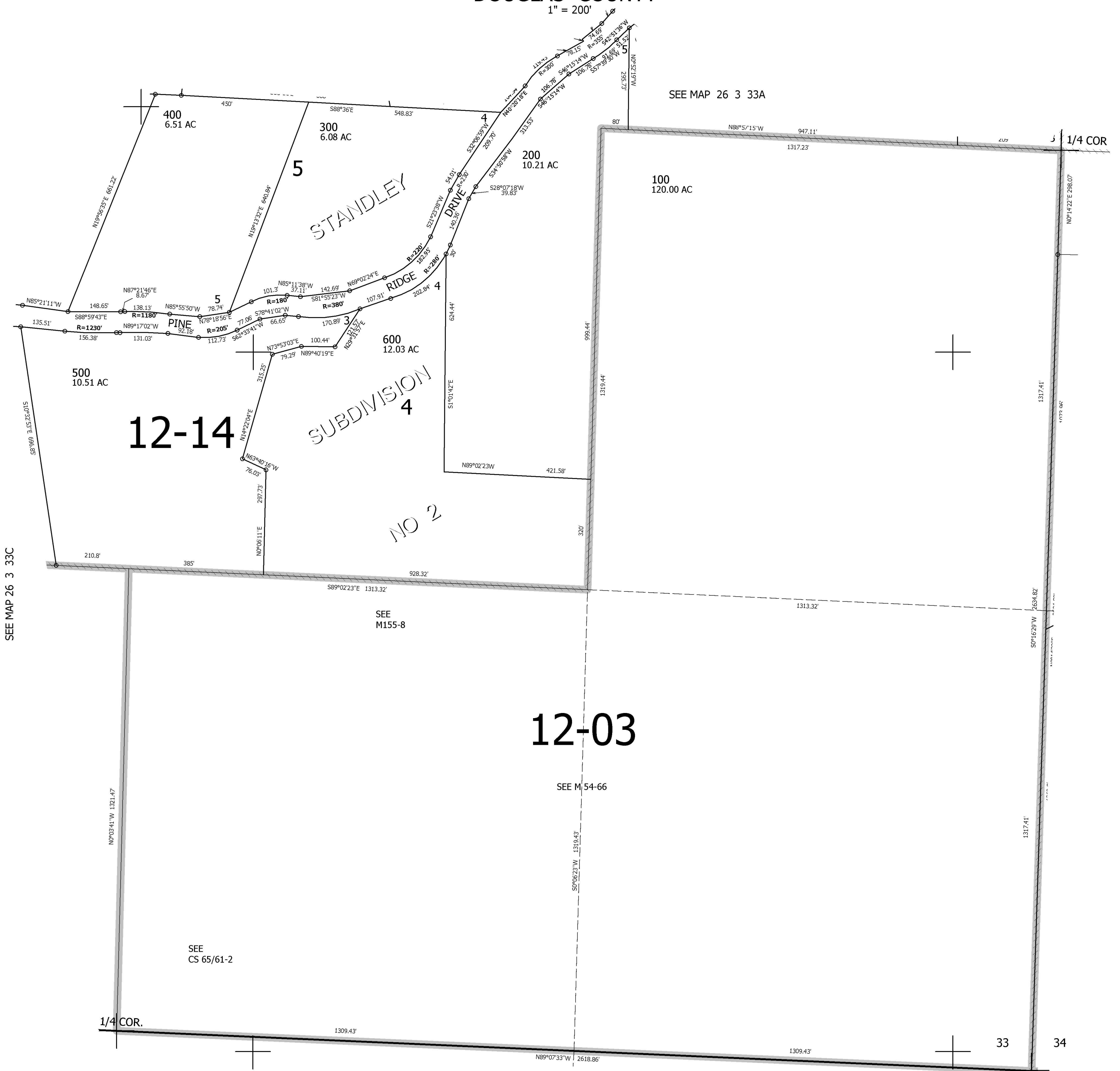
THIS MAP WAS PREPARED FOR ASSESSMENT PURPOSE ONLY.

SE1/4 SEC.33 T.26S. R.3W. W.M.
DOUGLAS COUNTY

REVISED ON
3-13-97

26 3 33D

1" = 200'



SEE MAP 26 3 33A

CANCELLED NO'S

SEE MAP 26 3 33C

SEE MAP 26 3 34C

SEE M155-8

12-03

SEE M 54-66

SEE CS 65/61-2

1/4 COR.

33

34

SEE MAP 27 3 4

4

3

4,242,000

590,000

26 3 33D