

THIS MAP WAS PREPARED FOR ASSESSMENT PURPOSE ONLY.

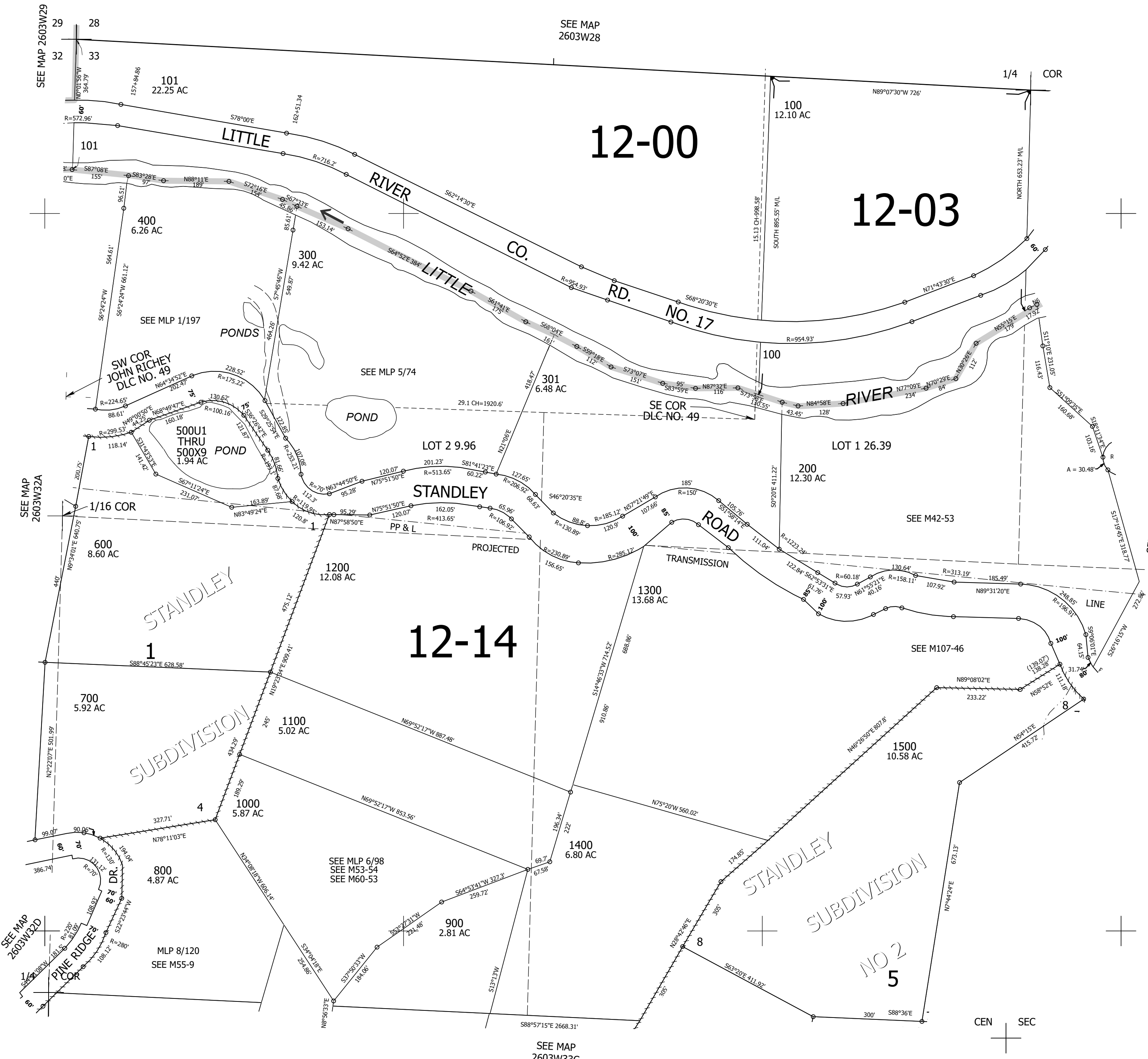
Upper Left:
123°4'18"W 43°16'22"N
4236525E 595857N ft

NW1/4 SEC.33 T.26S. R.03W. W.M.
DOUGLAS COUNTY
1" = 200'

Date Exported 2025-05-15

260333B

CANCELLED NOS:
500 801 1600



260333B

Lower Right:
123°3'23"W 43°15'49"N
4240449E 592380N ft