

THIS MAP WAS PREPARED FOR ASSESSMENT PURPOSE ONLY.

Upper Left:
123°3'44"W 43°16'22"N
4238997E 595750N ft

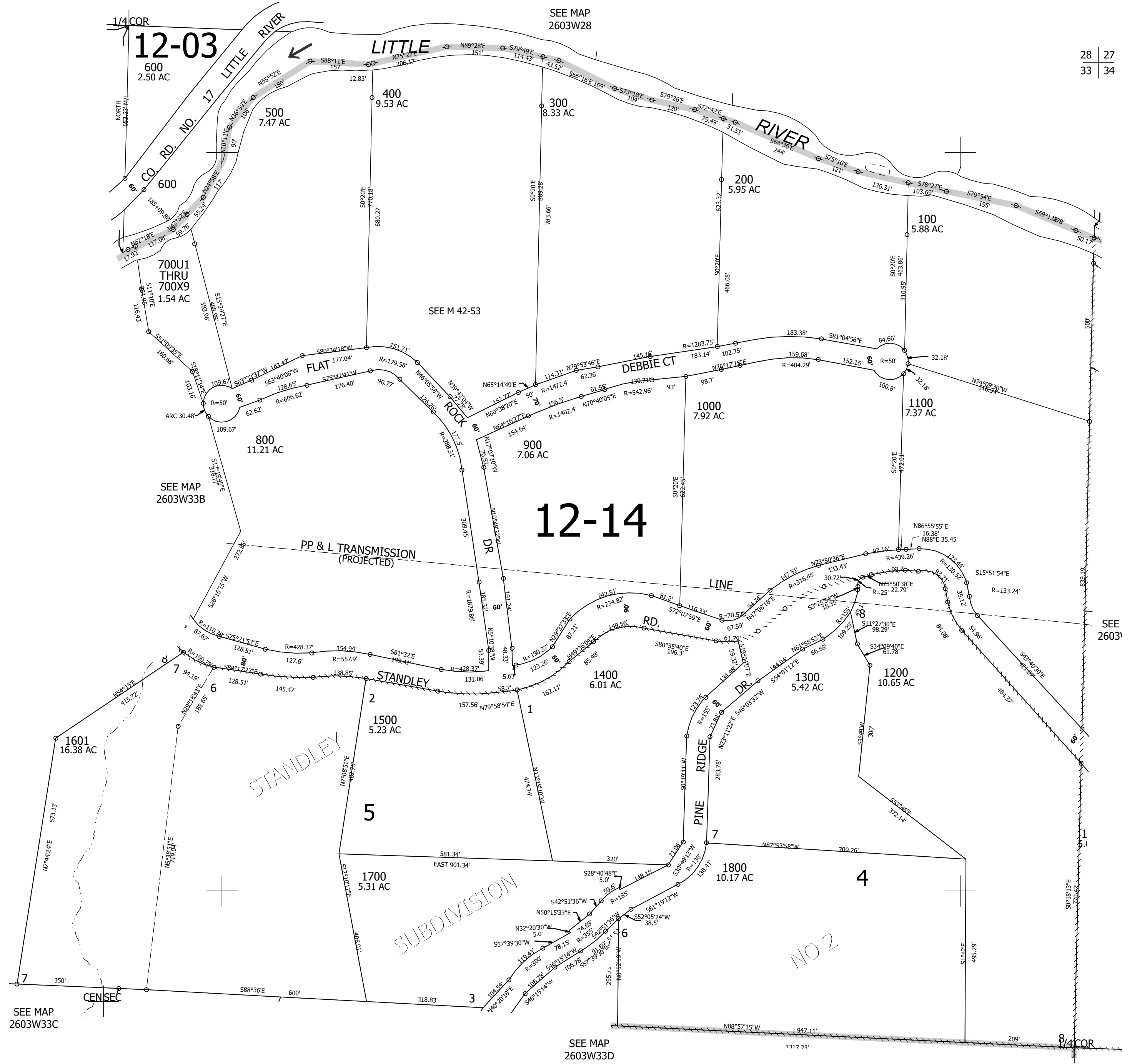
NE1/4 SEC.33 T.26S. R.03W. W.M.
DOUGLAS COUNTY
1" = 200'

Date Expired: 3/22/2023 11:52 AM

2603W33A
&

CANCELLED NOS:
700 1600

28 | 27
33 | 34



LOT 1 26.39

SEE MAP
2603W33C

SEE MAP
2603W33D

SEE MAP
2603W34B

Lower Right:
123°2'50"W 43°15'48"N
4242875E 592214N ft

2603W33A
&