

THIS MAP WAS PREPARED FOR ASSESSMENT PURPOSE ONLY.

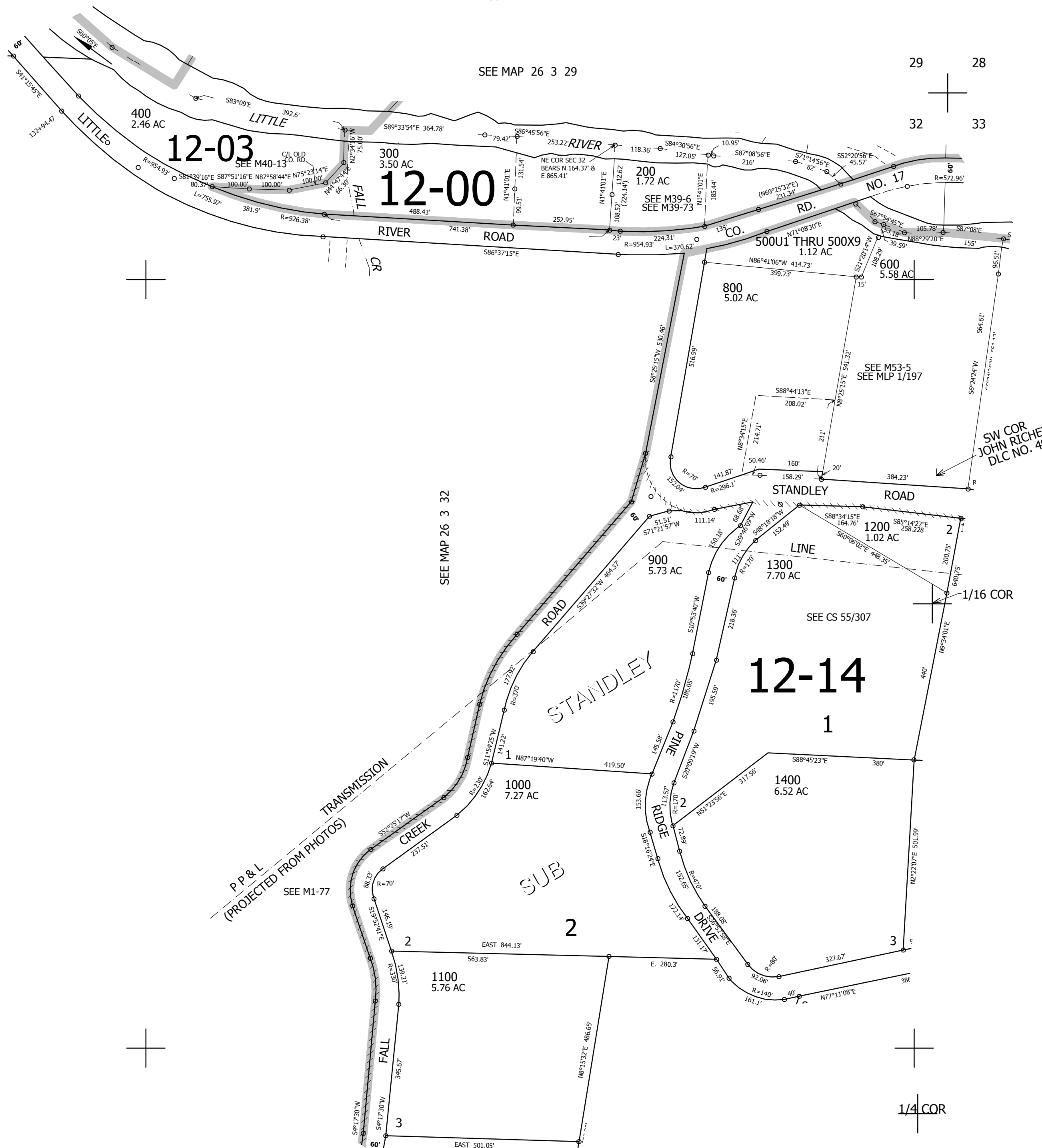
NE1/4 SEC.32 T.26S. R.3W. W.M.
DOUGLAS COUNTY

REVISED ON
9-25-13

26 3 32A

1" = 400'

1/4 COR



CANCELLED NO'S
100 500 700

SEE MAP 26 3 32

SEE MAP 26 3 33B

P P & L
(PROJECTED FROM PHOTOS)
SEE M1-77

SUB

CEN SEC

593,000

SEE MAP 26 3 32D

4,237,000

26 3 32A