

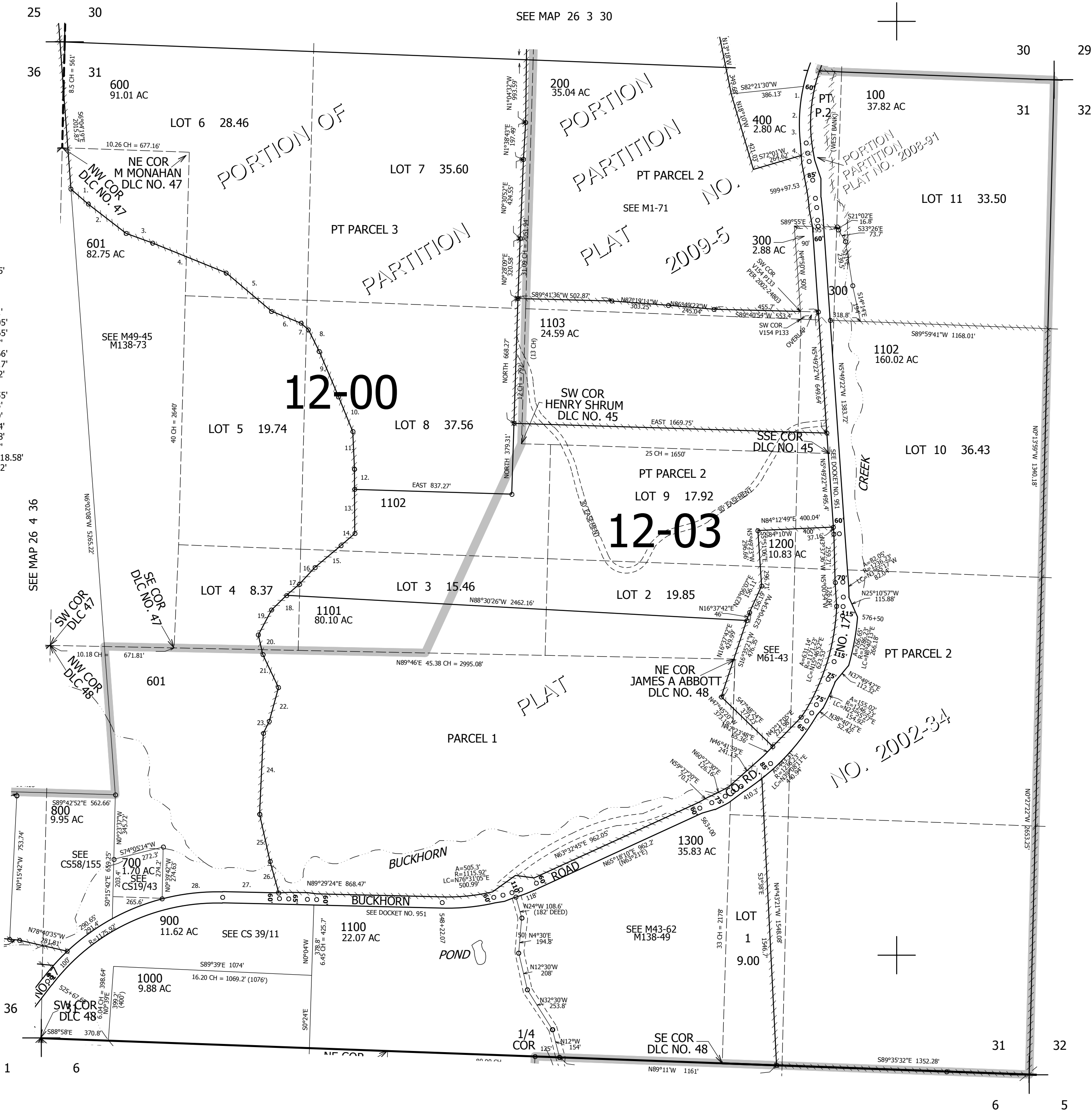
THIS MAP WAS PREPARED FOR ASSESSMENT PURPOSE ONLY.

SEC.31 T.26S. R.3W. W.M. DOUGLAS COUNTY

REVISED ON 4-16-10

26 3 31

1" = 400'



- PARCEL 601**
- S50°55'49"E 122.53'
 - S54°06'23"E 257.23'
 - S71°47'01"E 149.36'
 - S69°41'52"E 425.47'
 - S51°38'27"E 317.85'
 - S69°51'52"E 170.2'
 - S49°26'25"E 52.87'
 - S28°43'07"E 130.55'
 - S24°44'58"E 262.73'
 - S24°14'02"E 201.45'
 - S4°16'32"E 201.49'
 - S2°03'33"E 114.09'
 - S2°03'33"E 229.64'
 - S46°54'10"W 98.41'
 - S48°06'24"W 182.05'
 - S41°04'57"W 121.65'
 - S15°00'59"E 108.12'
 - S27°04'47"E 194.6'
 - S13°25'24"W 187.55'
 - S24°07'44"W 72.03'
 - S0°50'37"W 432.79'
 - S14°24'42"E 259.24'
 - S16°53'44"E 173.68'
 - S89°29'24"W 306.7'
 - LC=S81°42'17"W 318.58'
- A=319.56' R=1175.92'

- CANCELLED NO'S**
- 1401 1400 602
 - 604 605 1104
 - 1105 1106 1107
 - 500 603 201

- PARCEL 400**
- S7°31'W 117.95'
 - S0°14'E 86.71'
 - S1°53'E 101.66'
 - S10°24'E 66.45'

591,000

SEE MAP 27 3 6

4,231,000

26 3 31