

THIS MAP WAS PREPARED FOR ASSESSMENT PURPOSE ONLY.

Upper Left:
123°6'52"W 43°17'19"N
4225282E 602006N ft

SEC.30 T.26S. R.03W. W.M.
DOUGLAS COUNTY
1" = 400'

Date Exported 2024-02-20

260330

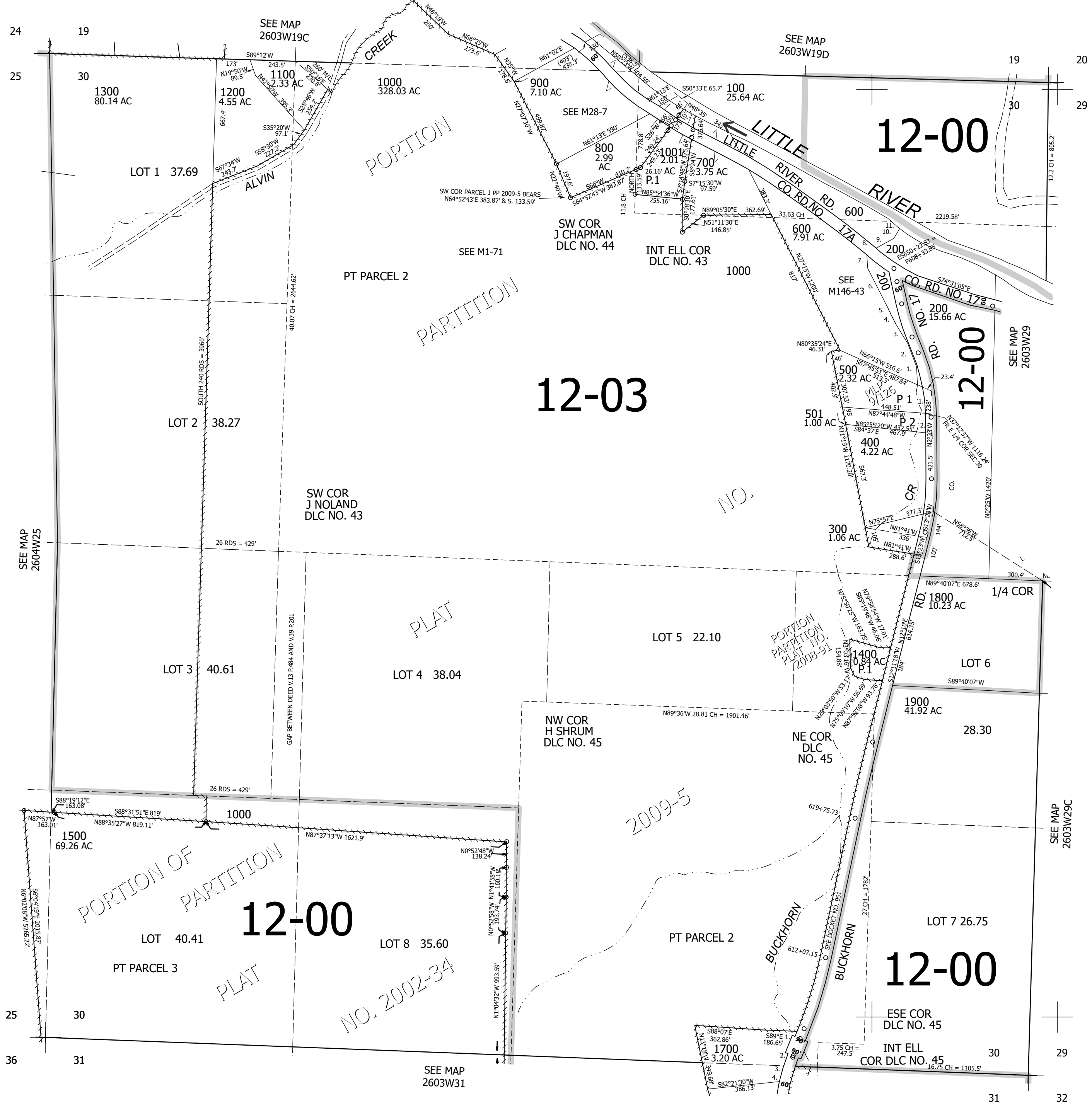
CANCELLED NOS:
201 601 1501
1600

- PARCELS 200 & 600
P.O.B. C/L BUCKHORN CREEK
N32°59'17"W 1266.56' FR E. 1/4
COR SECTION 30
1. N2°40'08"W 97.05'
 2. N20°37'28"W 136.59'
 3. N31°42'11"W 123.61'
 4. N26°43'23"W 58.85'
 5. N25°57'02"W 50.98'
 6. N27°03'25"W 223.97'
 7. N3°59'03"W 79.77'
 8. N60°30'44"E 66.31'
 9. N60°55'53"E 100'
 10. N30°55'53"E 50'
 11. NORTH 40' M/L

- PARCEL 500
1. LC=S8°07'57"E 141.82'
R=924.93'

- PARCEL 501
1. LC=S3°03'28"E 22.02'
R=924.93'

- PARCEL 1700
1. S20°53'W 138.1'
2. S15°41'W 52.5'
3. S13°10'W 67.51'
4. S13°12'W 29.2'



SEE MAP 2604W25

SEE MAP 2603W19D

SEE MAP 2603W29

SEE MAP 2603W29C

SEE MAP 2603W31

260330

Lower Right:
123°5'3"W 43°16'13"N
4233131E 595050N ft