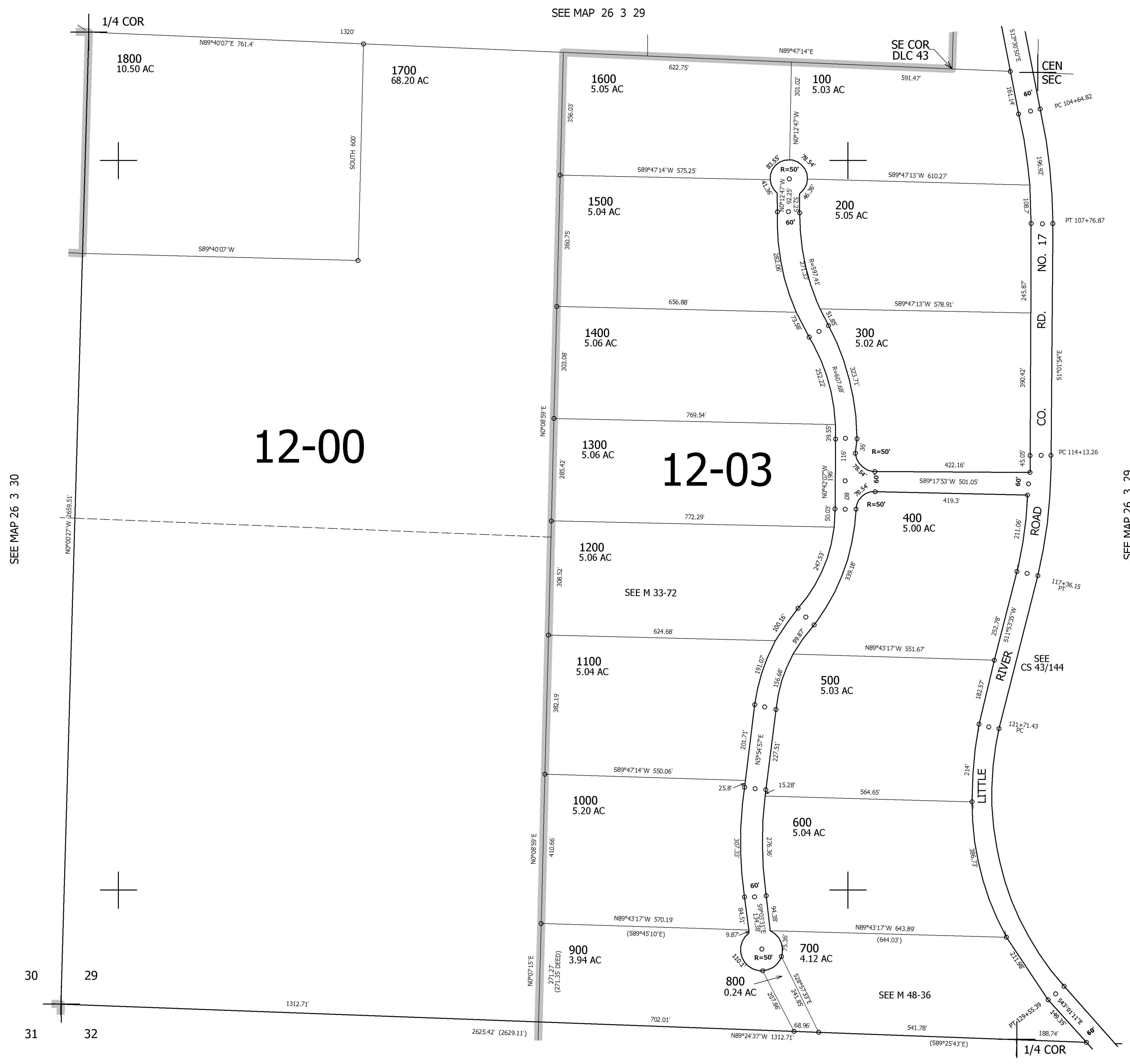


THIS MAP WAS PREPARED FOR ASSESSMENT PURPOSE ONLY.

SW1/4 SEC.29 T.26S. R.3W. W.M.
DOUGLAS COUNTY
1" = 200'

REVISED ON

26 3 29C



CANCELLED NO'S

SEE MAP 26 3 30

SEE MAP 26 3 29

596,000

SEE MAP 26 3 32

4,234,000

26 3 29C