

THIS MAP WAS PREPARED FOR ASSESSMENT PURPOSE ONLY.

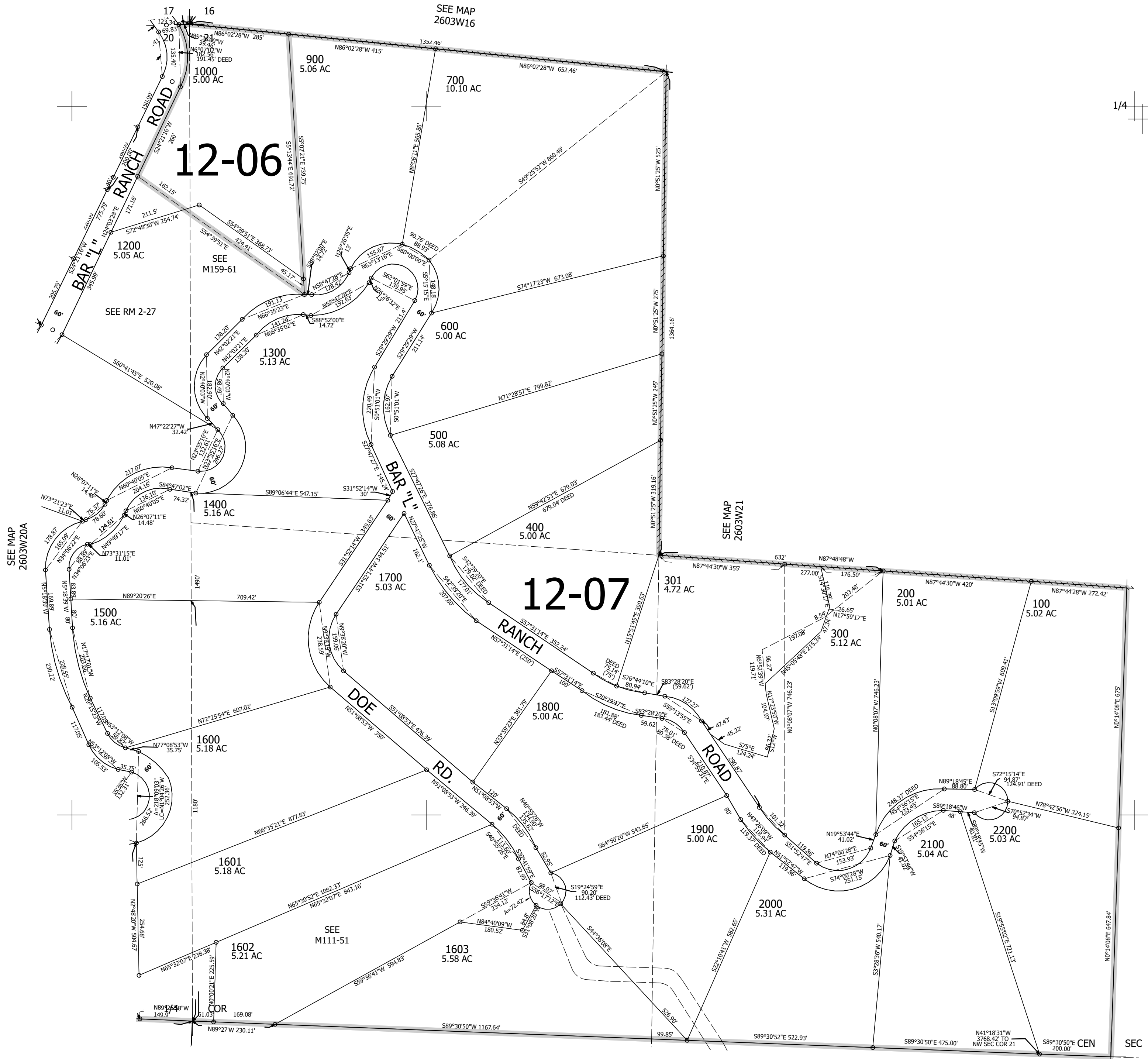
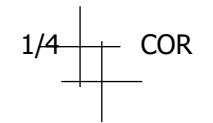
Upper Left:
123°4'23"W 43°18'7"N
4236487E 606508N ft

NW1/4 SEC.21 T.26S. R.03W. W.M.
DOUGLAS COUNTY
1" = 200'

Date Exported 2024-07-31

260321B

CANCELLED NOS:
1100 1604 1001
1201 302 303
800



12-06

12-07

SEE MAP 2603W20A

SEE MAP 2603W16

SEE MAP 2603W21

SEE M159-61

SEE M111-51

SEC

260321B

Lower Right:
123°3'28"W 43°17'34"N
4240412E 603030N ft