

THIS MAP WAS PREPARED FOR ASSESSMENT PURPOSE ONLY.

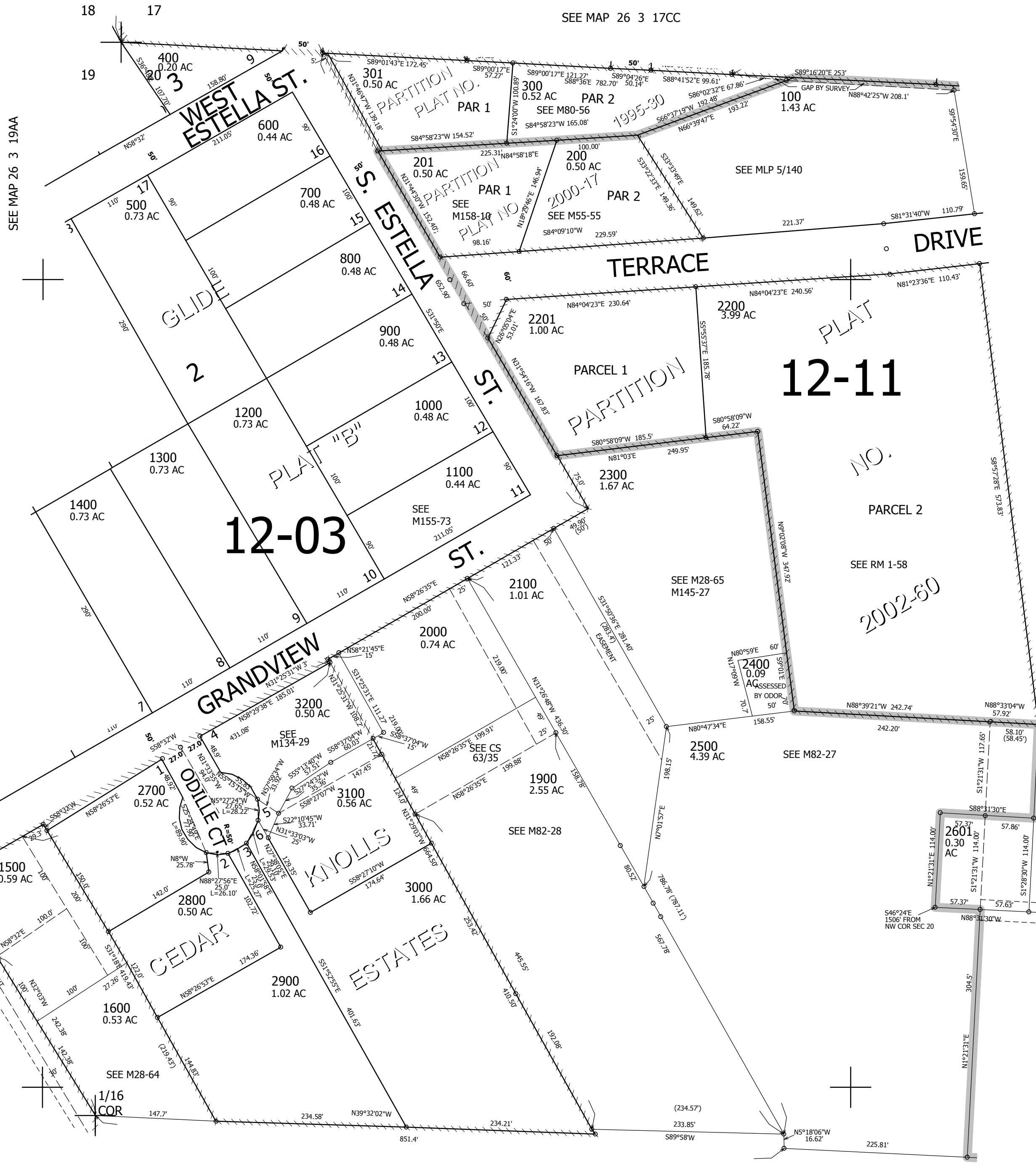
NW1/4 NW1/4 SEC.20 T.26S. R.3W. W.M.
DOUGLAS COUNTY

REVISED ON
12-23-11

26 3 20BB

1" = 100'

SEE MAP 26 3 17CC



1/16 COR

CANCELLED NO'S
1700 1800 2001
2501 2600 2002
3101 3201

SEE MAP 26 3 20B

1/16 COR

SEE MAP 26 3 20

4,233,000

26 3 20BB