

THIS MAP WAS PREPARED FOR ASSESSMENT PURPOSE ONLY.

SE1/4 SEC.19 T.26S. R.3W. W.M.
DOUGLAS COUNTY

REVISED ON
4-15-10

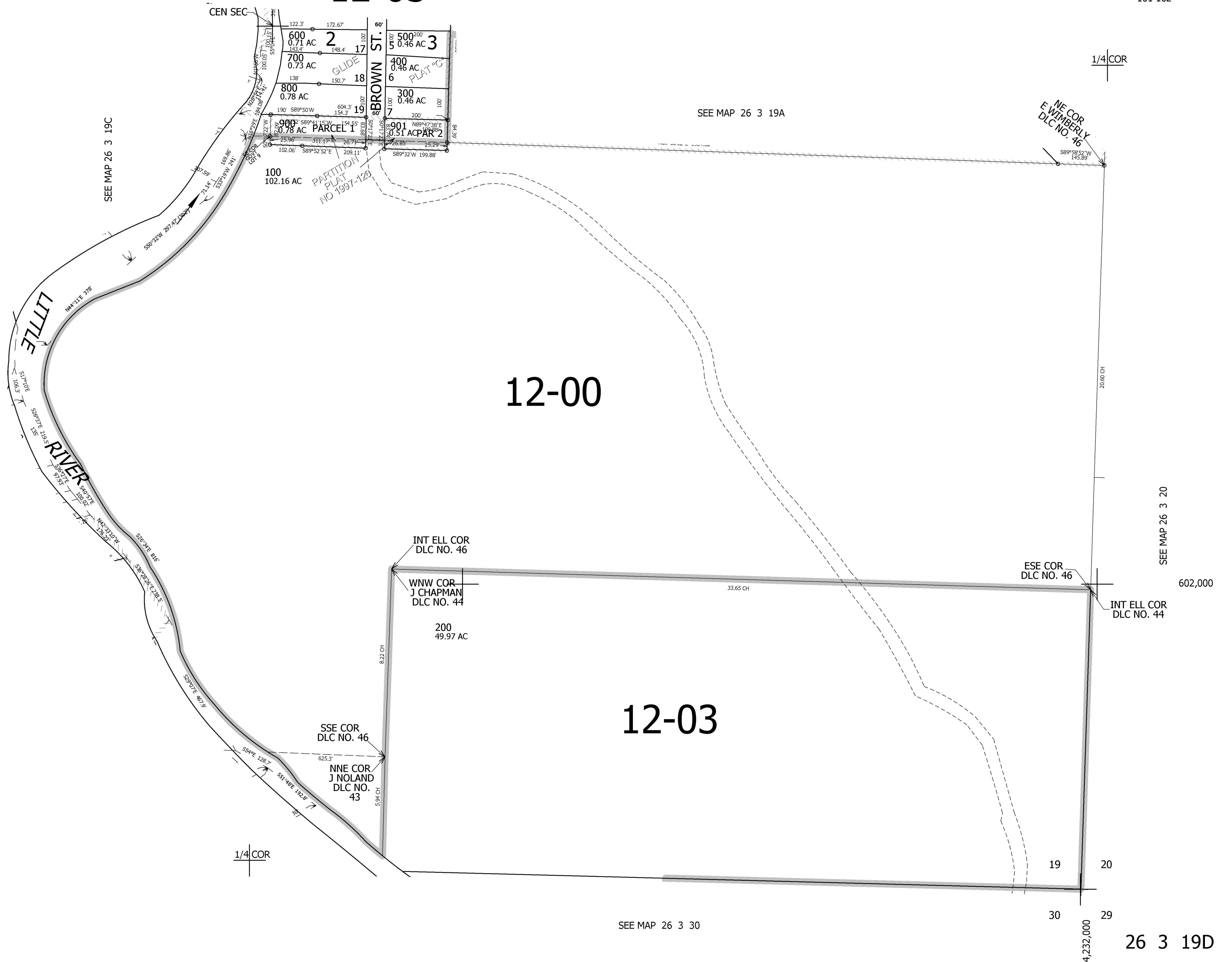
26 3 19D

1" = 200'

SEE MAP 26 3 19AC

12-03

CANCELLED NO'S
101 102



12-00

12-03

26 3 19D