

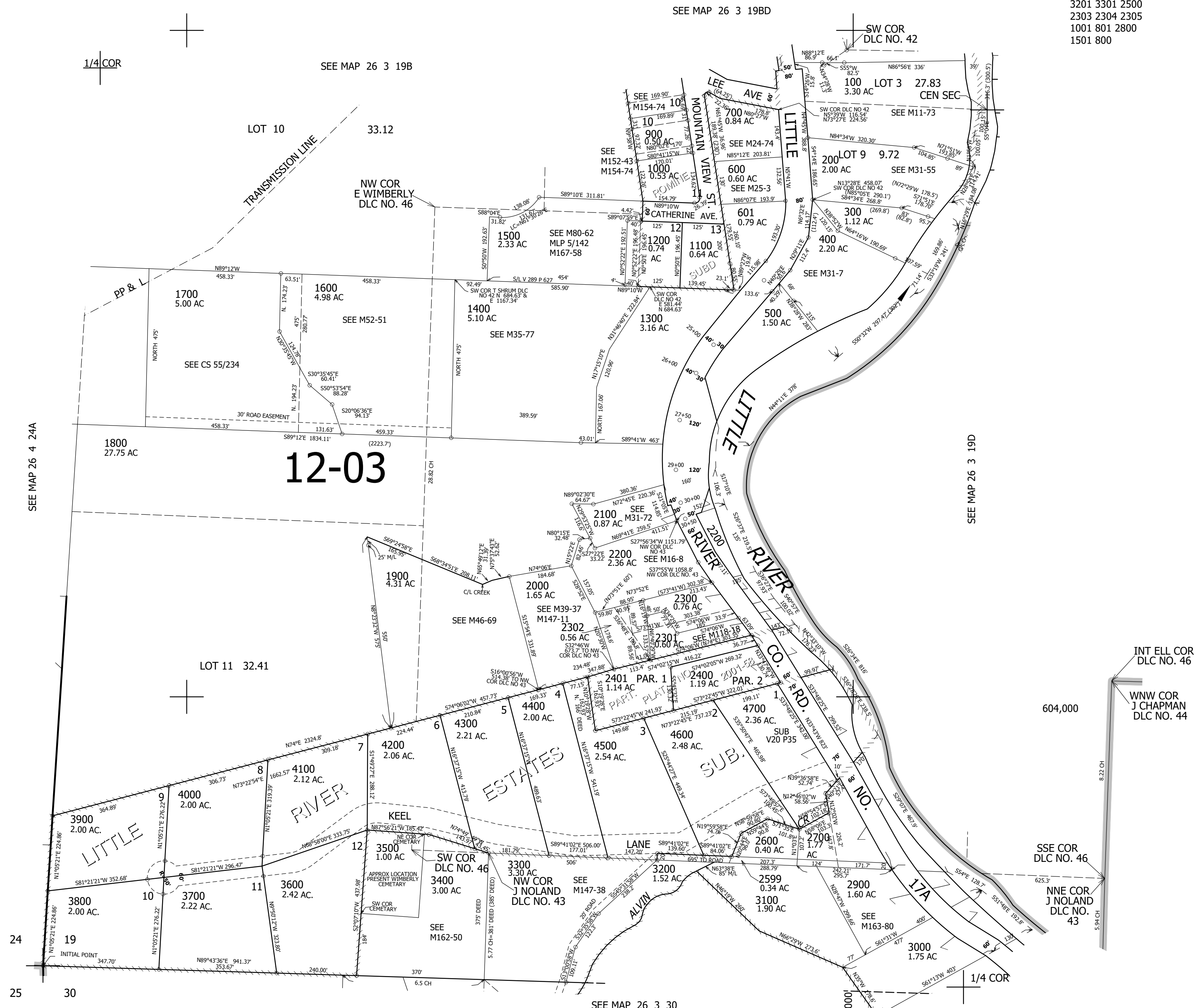
THIS MAP WAS PREPARED FOR ASSESSMENT PURPOSE ONLY.

SW1/4 SEC.19 T.26S. R.3W. W.M.
DOUGLAS COUNTY
1" = 200'

REVISED ON
1-24-22

26 3 19C

CANCELLED NO'S
3201 3301 2500
2303 2304 2305
1001 801 2800
1501 800



SEE MAP 26 3 19BD

SEE MAP 26 3 19B

SEE MAP 26 3 19D

SEE MAP 26 4 24A

SEE MAP 26 3 30

INT ELL COR
DLC NO. 46
WNW COR
J CHAPMAN
DLC NO. 44
604,000

SSE COR
DLC NO. 46
NNE COR
J NOLAND
DLC NO. 43

26 3 19C