

THIS MAP WAS PREPARED FOR ASSESSMENT PURPOSE ONLY.

NW1/4 SEC.19 T.26S. R.3W. W.M.  
DOUGLAS COUNTY

REVISED ON  
1-24-22

26 3 19B  
& INDEX

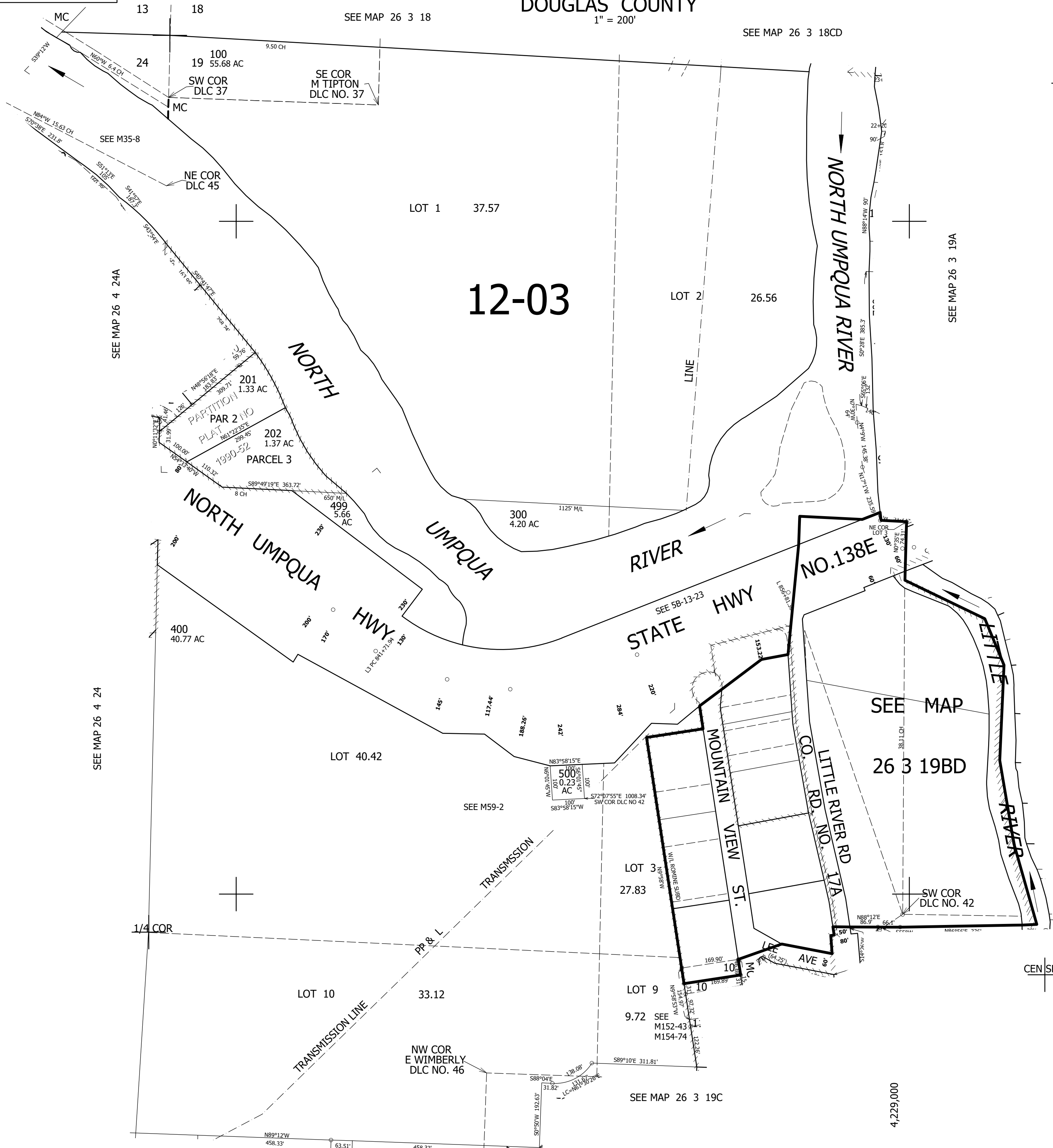
1" = 200'

SEE MAP 26 3 18

SEE MAP 26 3 18CD

1/4 COR

CANCELLED NO'S  
200 203



12-03

SEE MAP  
26 3 19BD

SEE MAP 26 3 19AC

604,000

26 3 19B  
& INDEX

4,229,000