

THIS MAP WAS PREPARED FOR ASSESSMENT PURPOSE ONLY.

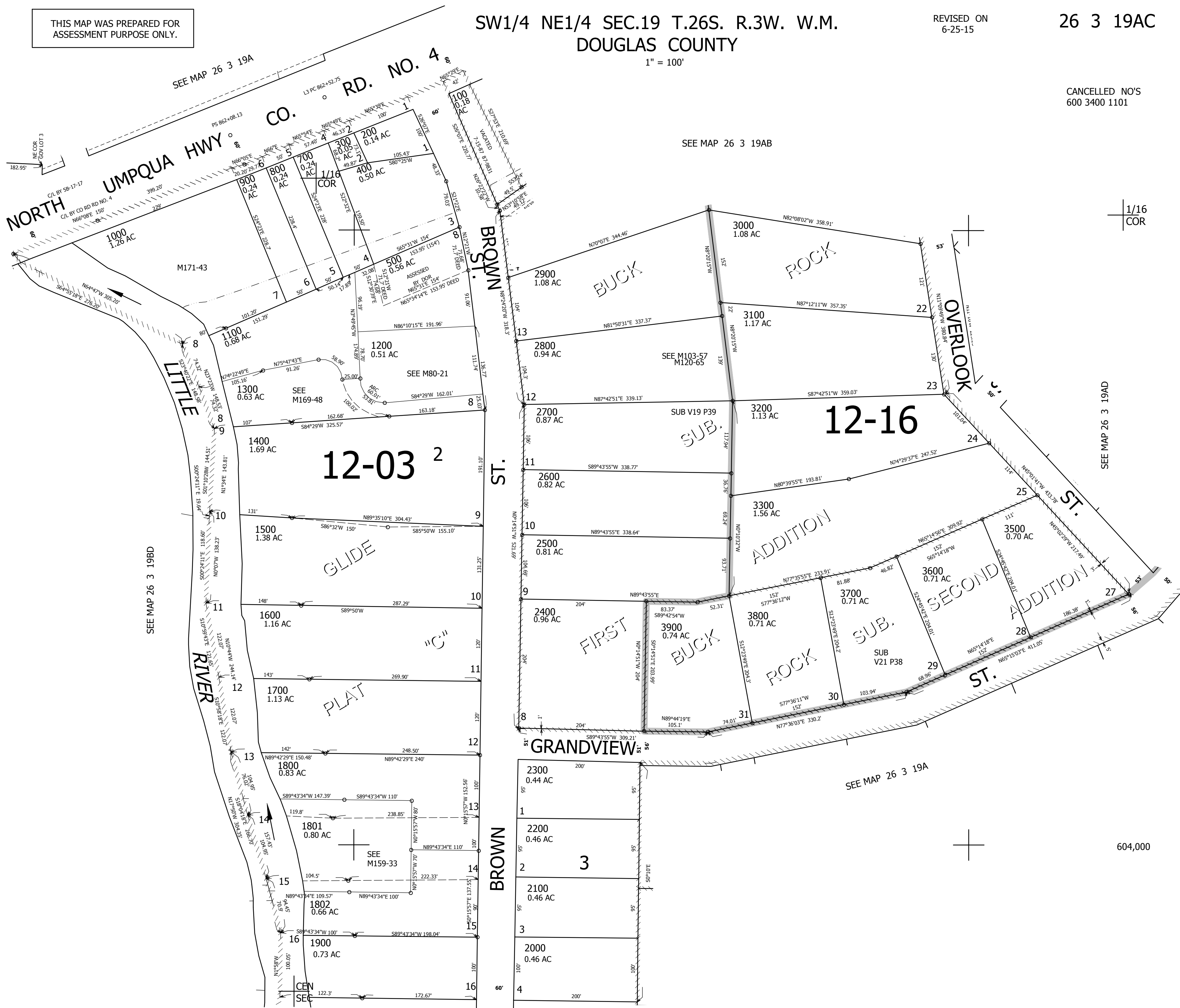
SW1/4 NE1/4 SEC.19 T.26S. R.3W. W.M. DOUGLAS COUNTY

REVISED ON 6-25-15

26 3 19AC

1" = 100'

CANCELLED NO'S 600 3400 1101



SEE MAP 26 3 19BD

SEE MAP 26 3 19AB

SEE MAP 26 3 19AD

SEE MAP 26 3 19A

SEE MAP 26 3 19D

604,000

4,230,500

1/16 COR

1/16 COR

26 3 19AC