

THIS MAP WAS PREPARED FOR ASSESSMENT PURPOSE ONLY.

NW1/4 NE1/4 SEC.19 T.26S. R.3W. W.M.
DOUGLAS COUNTY
1" = 100'

REVISED ON
2-20-09

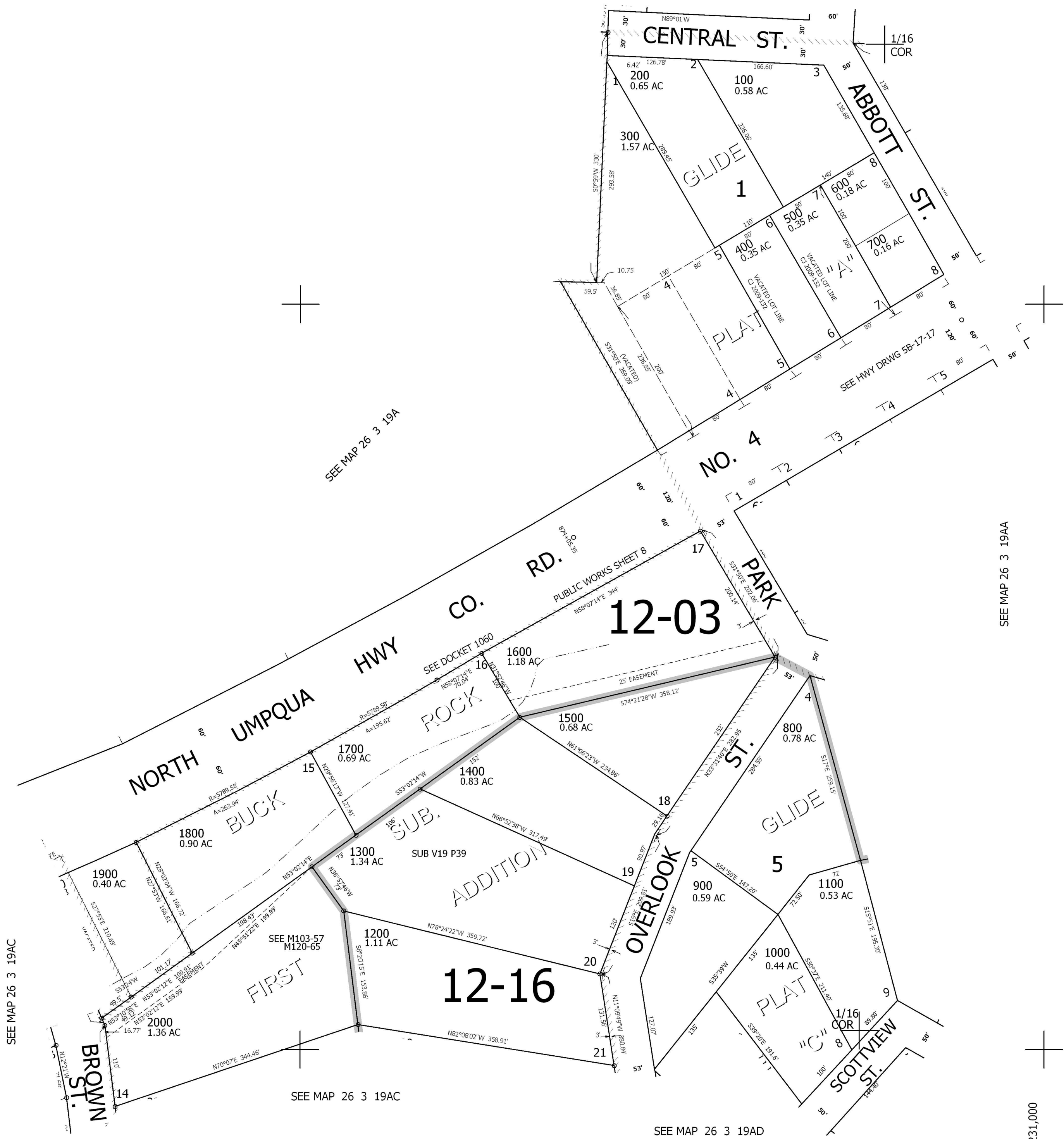
26 3 19AB

1/4
COR

SEE MAP 26 3 18DC

1/16
COR

CANCELLED NO'S



SEE MAP 26 3 19AA

1/16
COR

SEE MAP 26 3 19AC

SEE MAP 26 3 19AC

SEE MAP 26 3 19AD

4,231,000

605,000

26 3 19AB