

THIS MAP WAS PREPARED FOR ASSESSMENT PURPOSE ONLY.

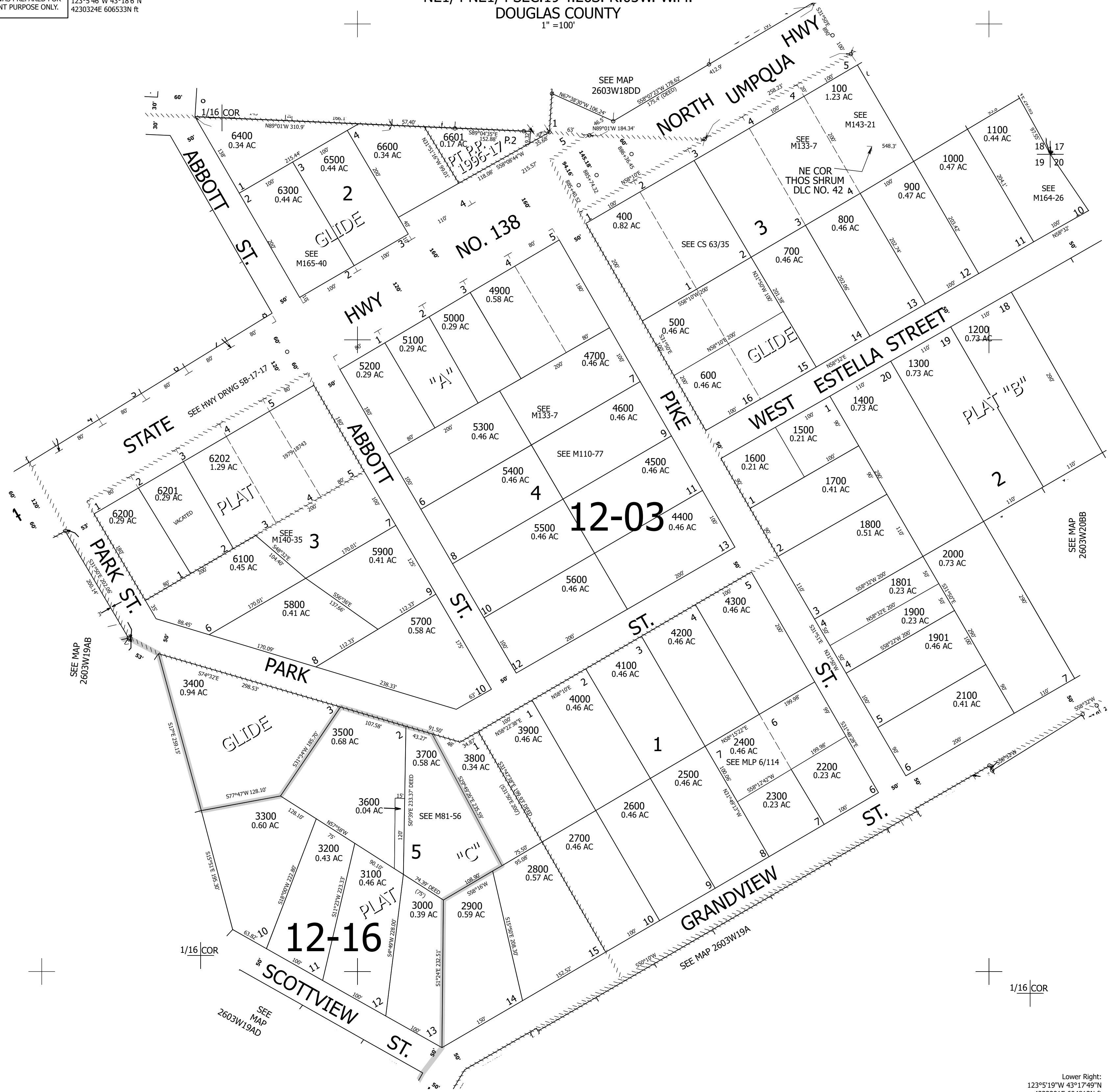
Upper Left:  
123°5'46"W 43°18'6"N  
4230324E 606533N ft

NE1/4 NE1/4 SEC.19 T.26S. R.03W. W.M.  
DOUGLAS COUNTY  
1" = 100'

Date Exported 2025-12-17

260319AA

CANCELLED NOS:  
200 5300A1 6602  
501 601 6000 100A1  
4800 300



Lower Right:  
123°5'19"W 43°17'49"N  
4232301E 604813N ft

260319AA