

THIS MAP WAS PREPARED FOR ASSESSMENT PURPOSE ONLY.

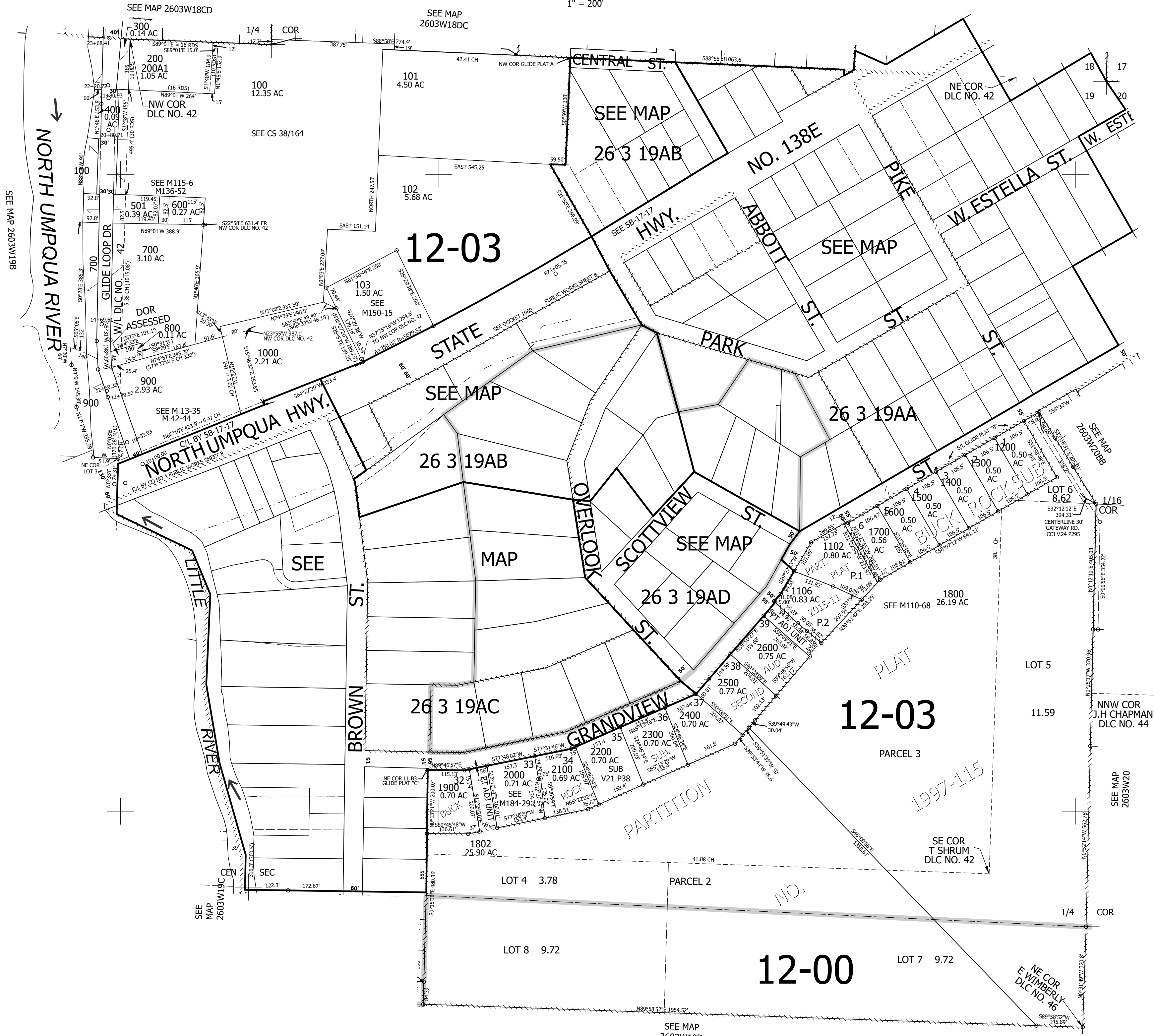
Upper Left:  
123°6'11"W 43°18'7"N  
4228503E 606706N ft

NE1/4 SEC.19 T.26S. R.03W. W.M.  
DOUGLAS COUNTY  
1" = 200'

Date Exported 2026-01-13

260319A  
& INDEX

CANCELLED NOS:  
801 802 902  
2700 2101 100A1



260319A  
& INDEX

Lower Right:  
123°5'16"W 43°17'32"N  
4232429E 603106N ft