

THIS MAP WAS PREPARED FOR ASSESSMENT PURPOSE ONLY.

Upper Left:  
123°5'45"W 43°18'18"N  
4230425E 607804N ft

SE1/4 SE1/4 SEC.18 T.26S. R.03W. W.M.  
DOUGLAS COUNTY  
1" = 100'

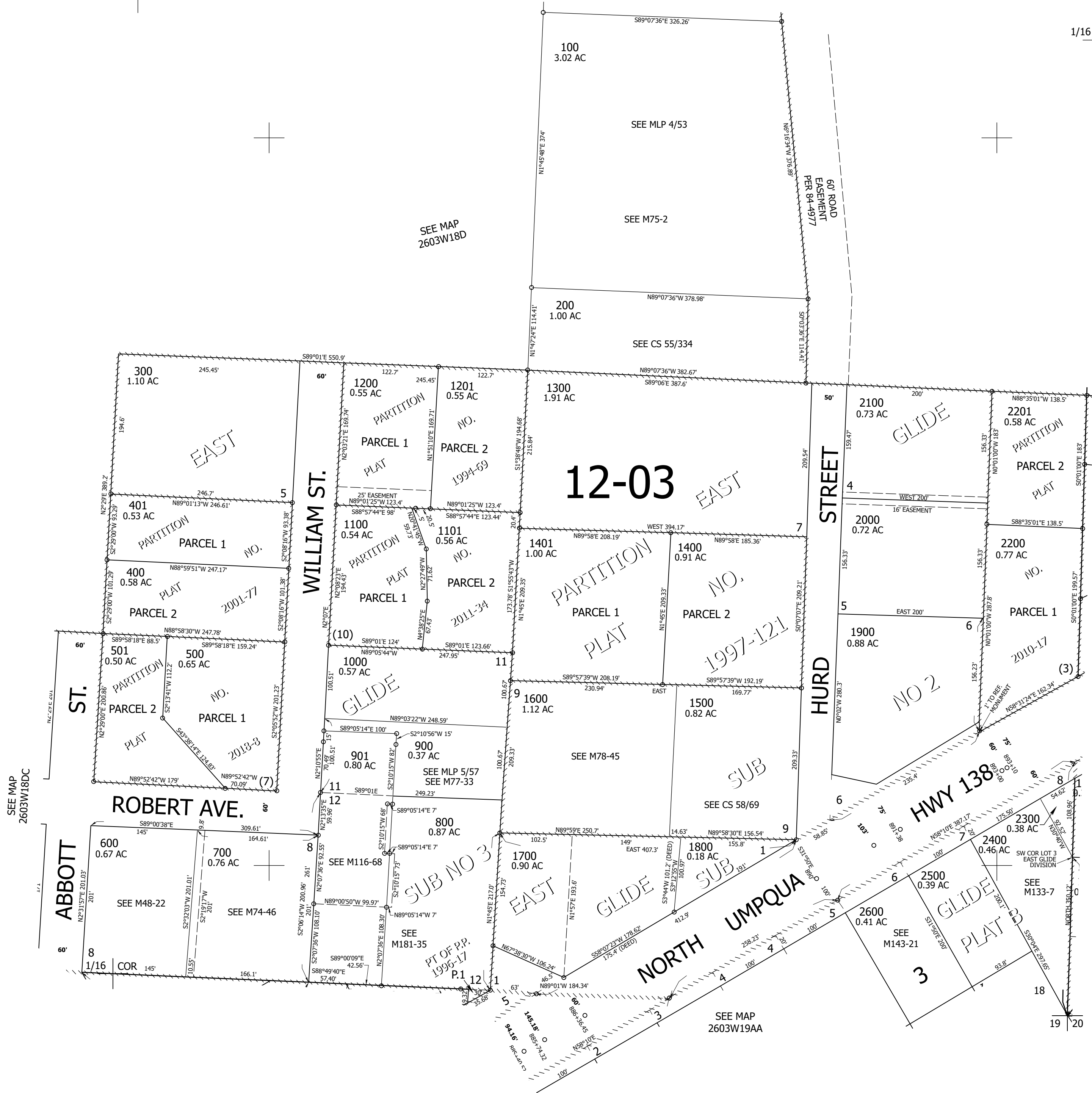
Date Exported: 2/24/2023 10:56 AM

260318DD  
&

CANCELLED NOS:  
801 802 902  
2700 803

1/16 COR

1/16 COR



SEE MAP  
2603W18DC

SEE MAP  
2603W17CC

SEE MAP  
2603W19AA

Lower Right:  
123°5'18"W 43°18'2"N  
4232388E 606065N ft

260318DD  
&