

THIS MAP WAS PREPARED FOR ASSESSMENT PURPOSE ONLY.

SW1/4 SE1/4 SEC.18 T.26S. R.3W. W.M.  
DOUGLAS COUNTY  
1" = 100'

REVISED ON  
5-4-06

26 3 18DC

1/16 COR

1/16 COR

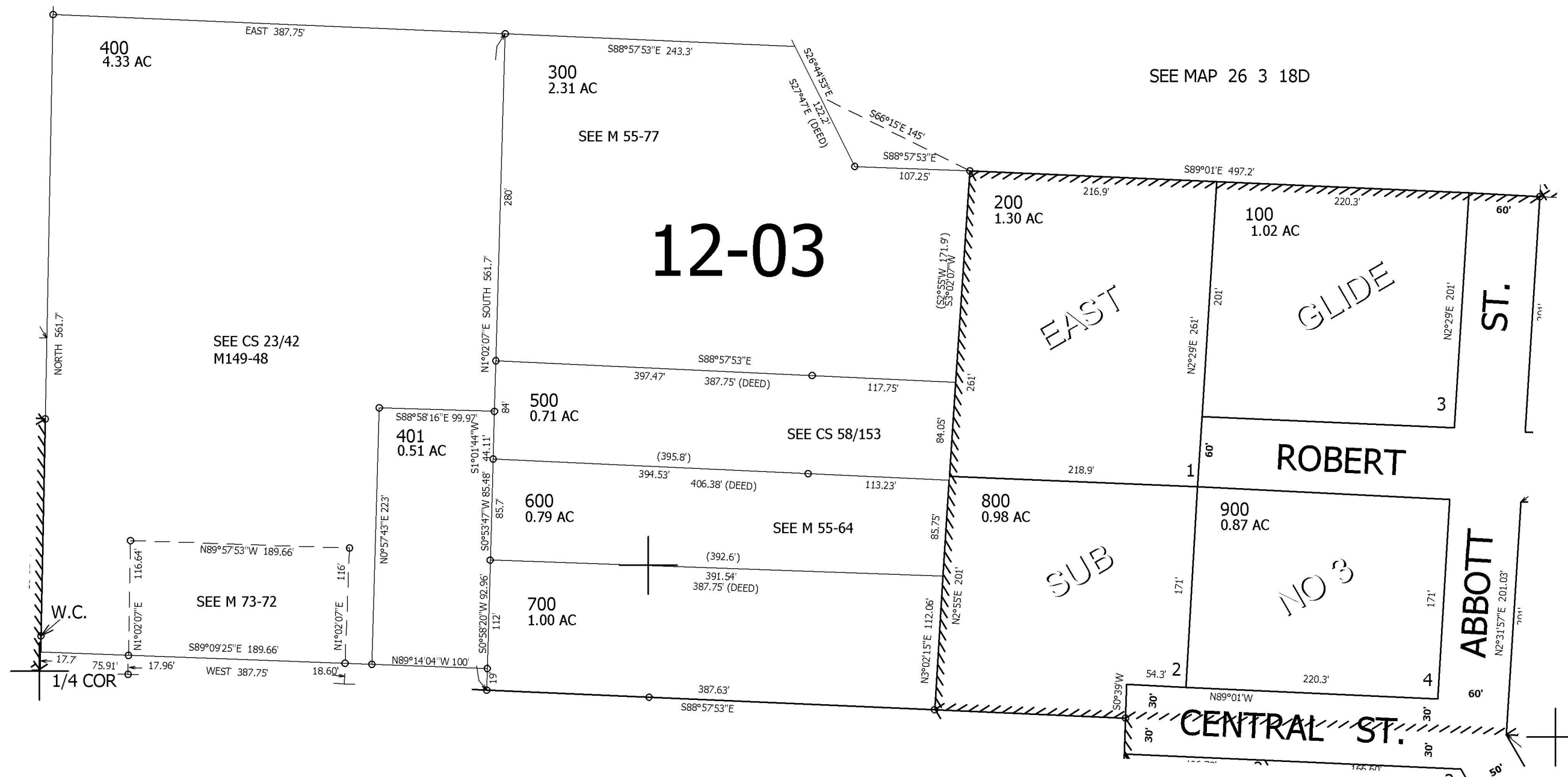
CANCELLED NO'S

SEE MAP 26 3 18

SEE MAP 26 3 18D

SEE MAP 26 3 18CD

SEE MAP 26 3 18DD



SEE MAP 26 3 19A

SEE MAP 26 3 19AB

4,230,000

606,500

26 3 18DC