

THIS MAP WAS PREPARED FOR ASSESSMENT PURPOSE ONLY.

Upper Left:
123°6'6"W 43°18'34"N
4228941E 609431N ft

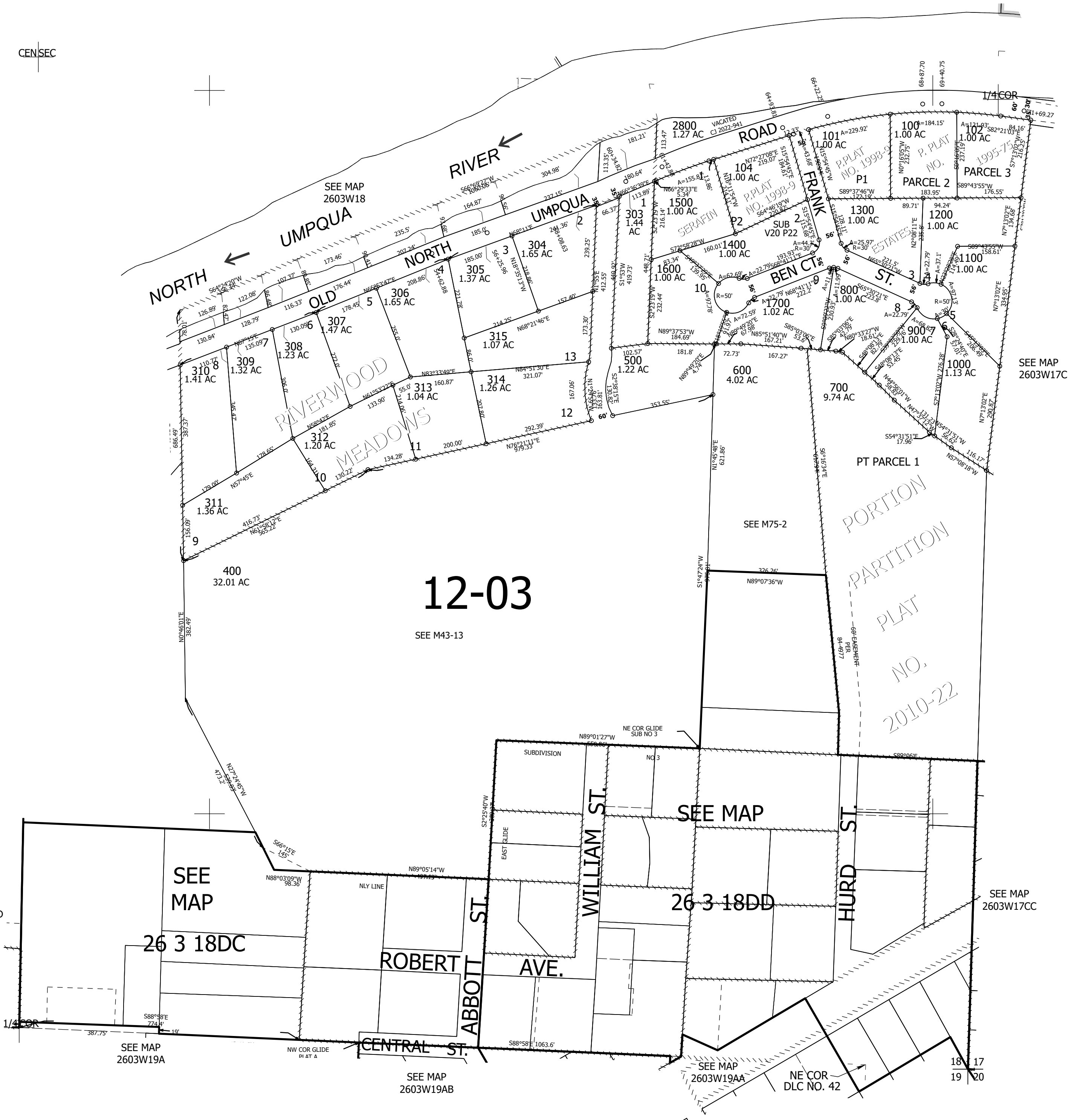
SE1/4 SEC.18 T.26S. R.03W. W.M.
DOUGLAS COUNTY
1" = 200'

Date Expired: 1/5/2023 3:20 PM

2603W18D
&

CANCELLED NOS:
200 302 401 300 301 105 103

CENSEC



12-03

SEE M43-13

SEE MAP

26 3 18DC

SEE MAP 2603W19A

ROBERT AVE.

ABBOTT ST.

CENTRAL ST.

SEE MAP 2603W19AB

SEE MAP

26 3 18DD

NE COR GLIDE SUB NO 3

WILLIAM ST.

HURD ST.

SEE MAP 2603W19AA

NE COR DLC NO. 42

SEE MAP 2603W17CC

18 17
19 20

NW COR
DLC NO. 42

Lower Right:
123°5'12"W 43°18'1"N
4232819E 605944N ft

2603W18D
&