

THIS MAP WAS PREPARED FOR ASSESSMENT PURPOSE ONLY.

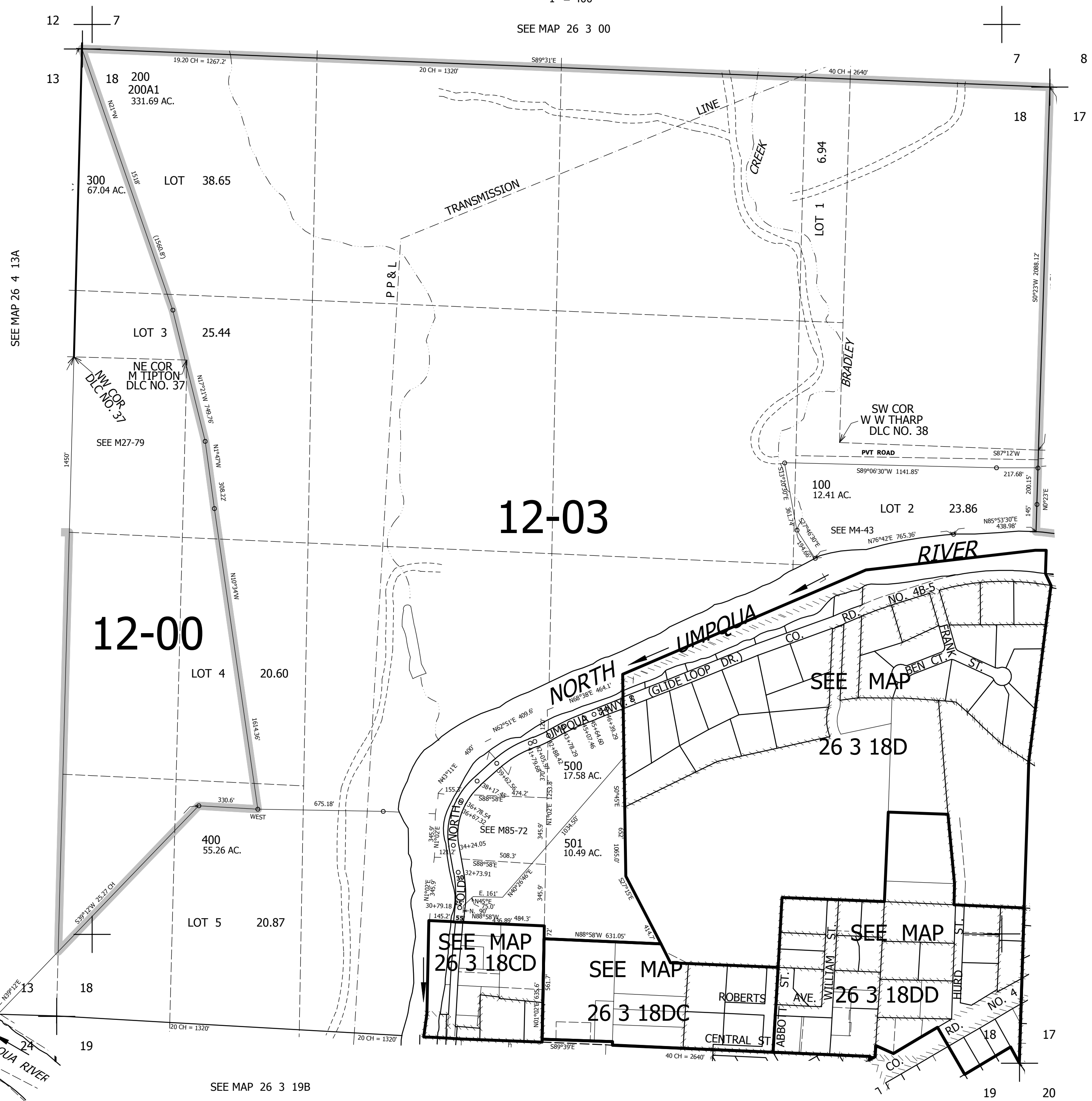
SEC.18 T.26S. R.3W. W.M.
DOUGLAS COUNTY

REVISED ON
6-16-11

26 3 18
& INDEX

1" = 400'

SEE MAP 26 3 00



CANCELLED NO'S

SEE MAP 26 3 17

SEE MAP 26 3 17C

SEE MAP 26 3 17CC

607,000

4,232,000

26 3 18
& INDEX