

THIS MAP WAS PREPARED FOR ASSESSMENT PURPOSE ONLY.

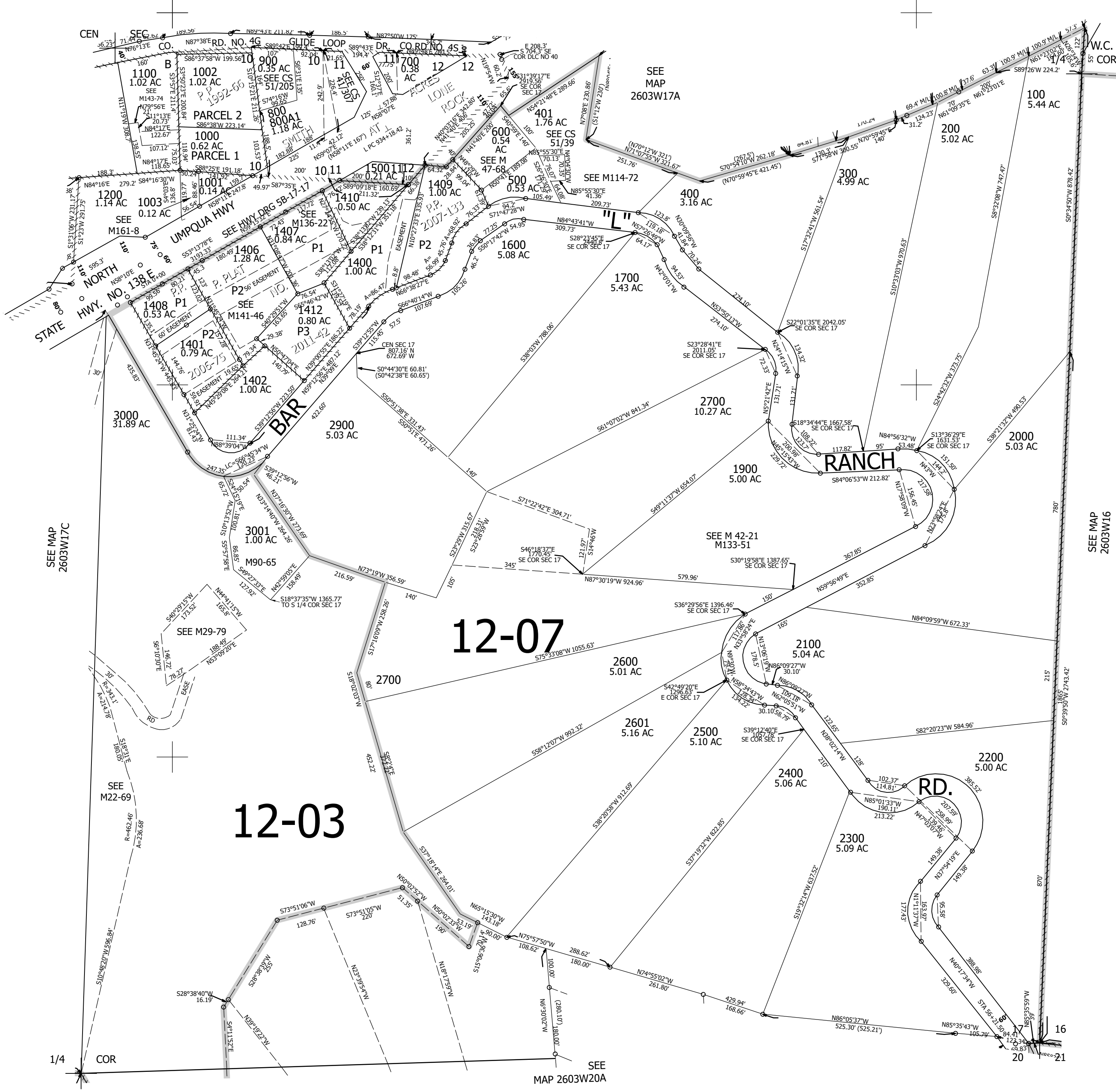
Upper Left:
123°4'56"W 43°18'34"N
4234085E 609296N ft

SE1/4 SEC.17 T.26S. R.03W. W.M.
DOUGLAS COUNTY
1" = 200'

Date Exported 2024-02-21

260317D

CANCELLED NOS:
1200 1701 1702
1801 1802 1401



260317D

Lower Right:
123°4'2"W 43°18'11"N
4238010E 605819N ft