

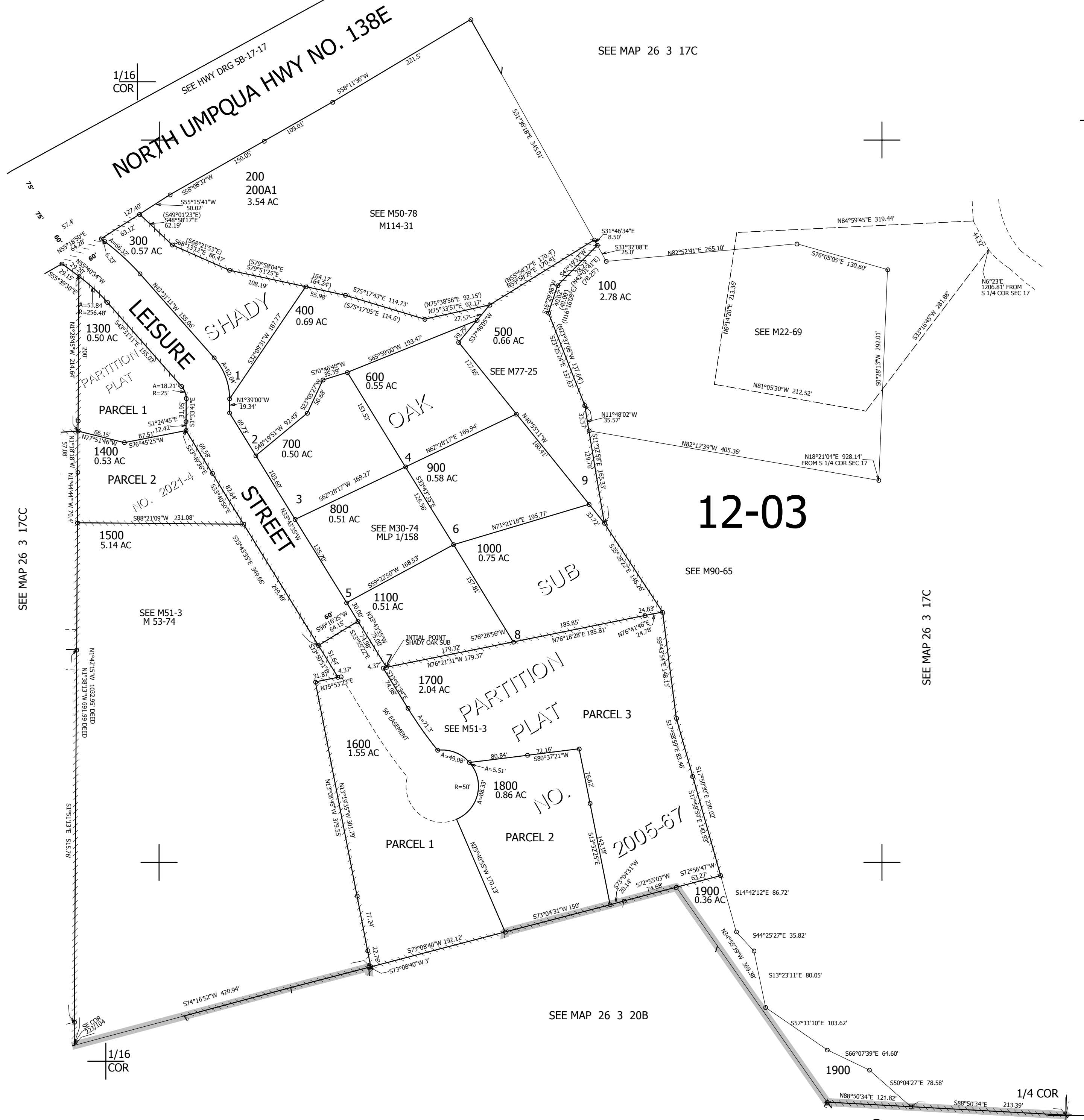
THIS MAP WAS PREPARED FOR ASSESSMENT PURPOSE ONLY.

SE1/4 SW1/4 SEC.17 T.26S. R.3W. W.M.  
DOUGLAS COUNTY

1" = 100'

REVISED ON  
1-22-21

26 3 17CD



12-03

CANCELLED NO'S  
1200 1701 1702  
1801 1802 1401

SEE MAP 26 3 17CC

SEE MAP 26 3 17C

SEE MAP 26 3 20B

606,500

26 3 17CD