

THIS MAP WAS PREPARED FOR ASSESSMENT PURPOSE ONLY.

SW1/4 SW1/4 SEC.17 T.26S. R.3W. W.M.
DOUGLAS COUNTY
1" = 100'

REVISED ON
1-19-21

26 3 17CC

CANCELLED NO'S
100 300 400
2404

1/16 COR

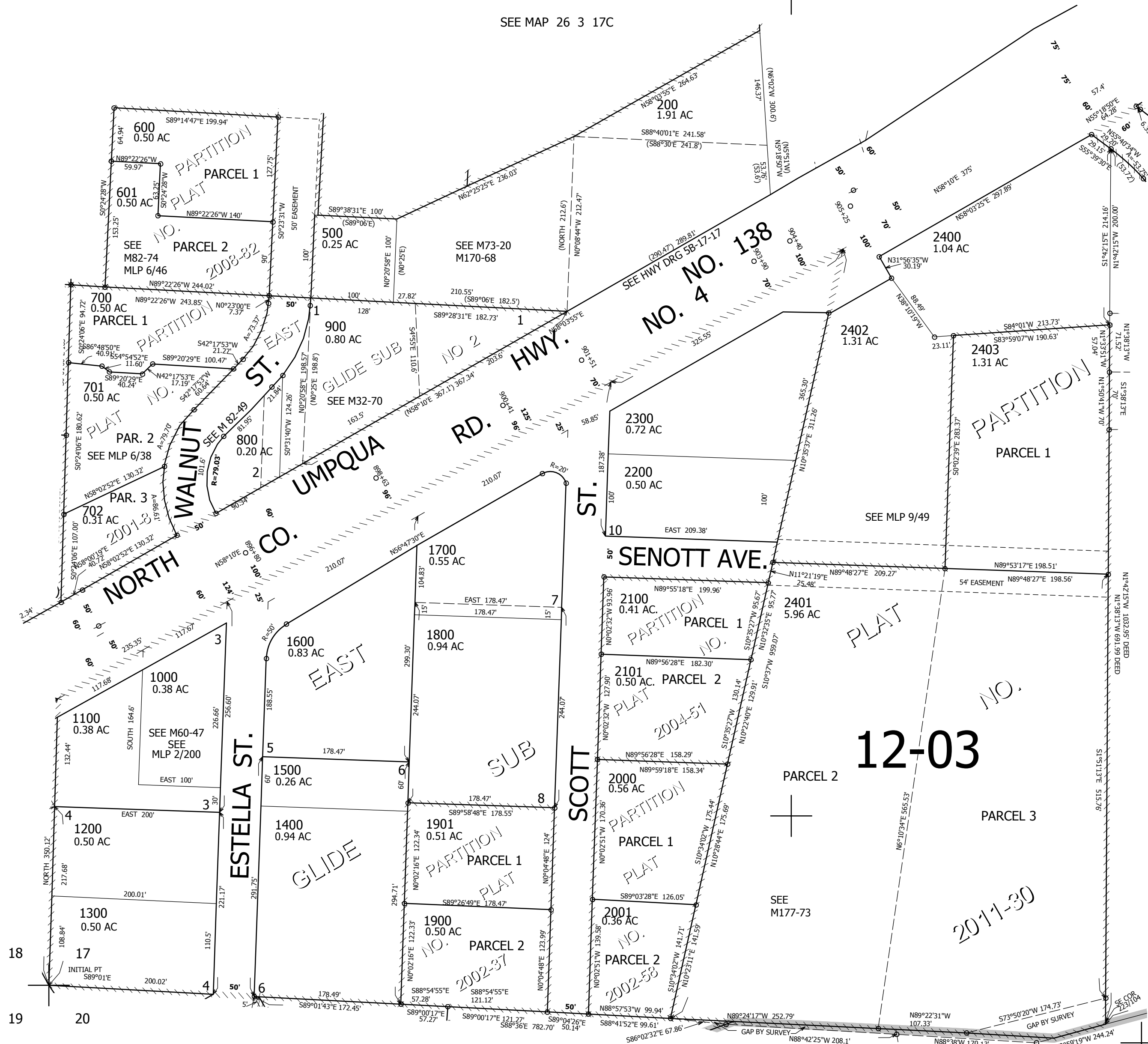
1/16 COR

SEE MAP 26 3 17C

SEE MAP 26 3 18DD

SEE MAP 26 3 17CD

606,500



SEE MAP 26 3 20BB

4,233,000

1/16 COR

26 3 17CC