

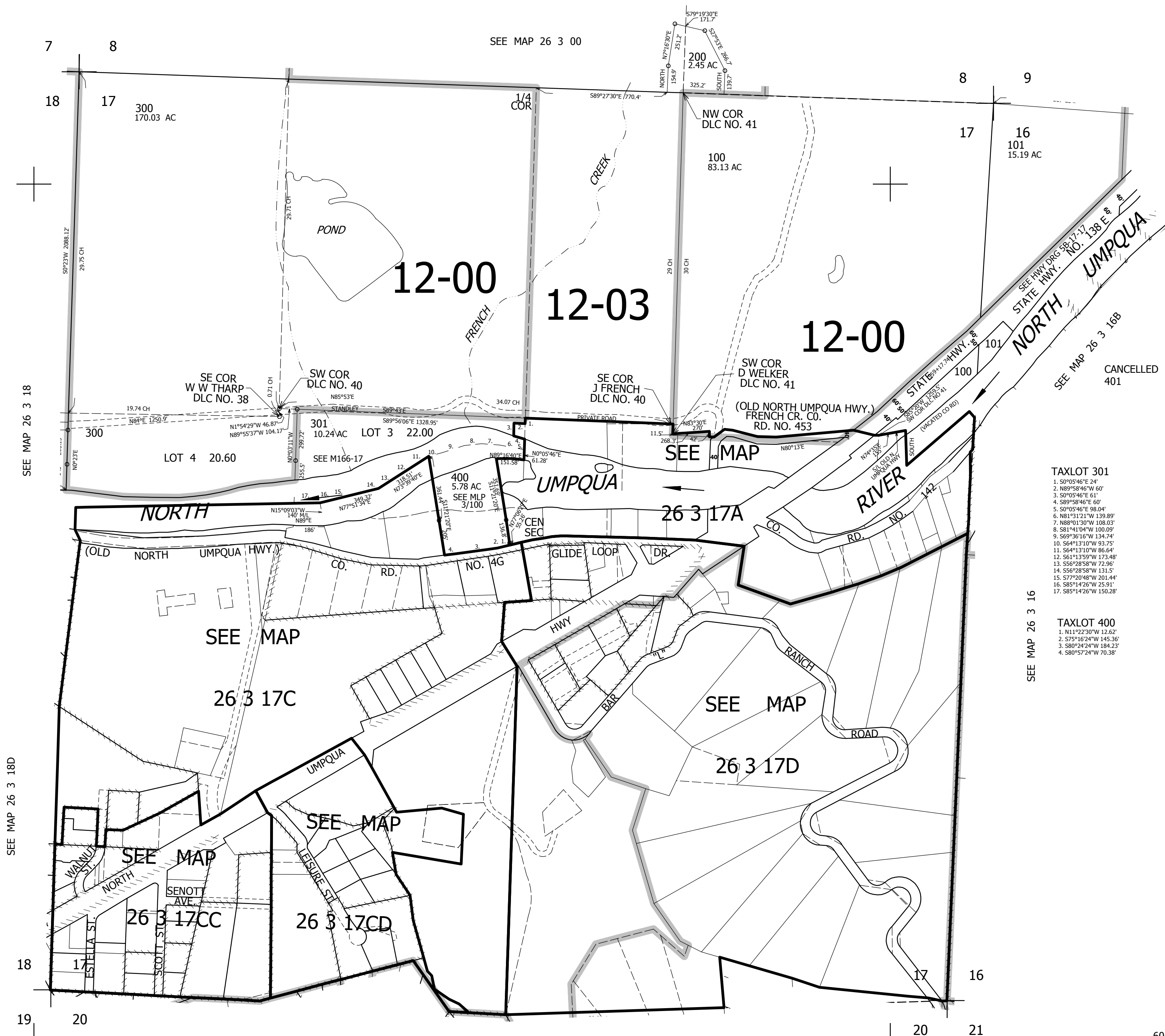
THIS MAP WAS PREPARED FOR ASSESSMENT PURPOSE ONLY.

SEC.17 T.26S. R.3W. W.M.  
DOUGLAS COUNTY

1" = 400'

REVISED ON  
3-16-20

26 3 17  
& INDEX



SEE MAP 26 3 18

SEE MAP 26 3 18D

SEE MAP 26 3 20BB

SEE MAP 26 3 20B

SEE MAP 26 3 20A

SEE MAP 26 3 16

- TAXLOT 301
1. S0°05'46"E 24'
  2. N89°58'46"W 60'
  3. S0°05'46"E 61'
  4. S89°58'46"E 60'
  5. S0°05'46"E 98.04'
  6. N81°31'21"W 139.89'
  7. N88°01'30"W 108.03'
  8. S81°41'04"W 100.09'
  9. S69°36'16"W 134.74'
  10. S64°13'10"W 93.75'
  11. S64°13'10"W 86.64'
  12. S61°13'59"W 173.48'
  13. S56°28'58"W 72.96'
  14. S56°28'58"W 131.5'
  15. S77°20'48"W 201.44'
  16. S85°14'26"W 25.91'
  17. S85°14'26"W 150.28'

- TAXLOT 400
1. N11°22'30"W 12.62'
  2. S75°16'24"W 145.36'
  3. S80°24'24"W 184.23'
  4. S80°57'24"W 70.38'

606,000

26 3 17  
& INDEX