

THIS MAP WAS PREPARED FOR ASSESSMENT PURPOSE ONLY.

# NW1/4 SEC.16 T.26S. R.3W. W.M. DOUGLAS COUNTY

REVISED ON 12-4-13

26 3 16B

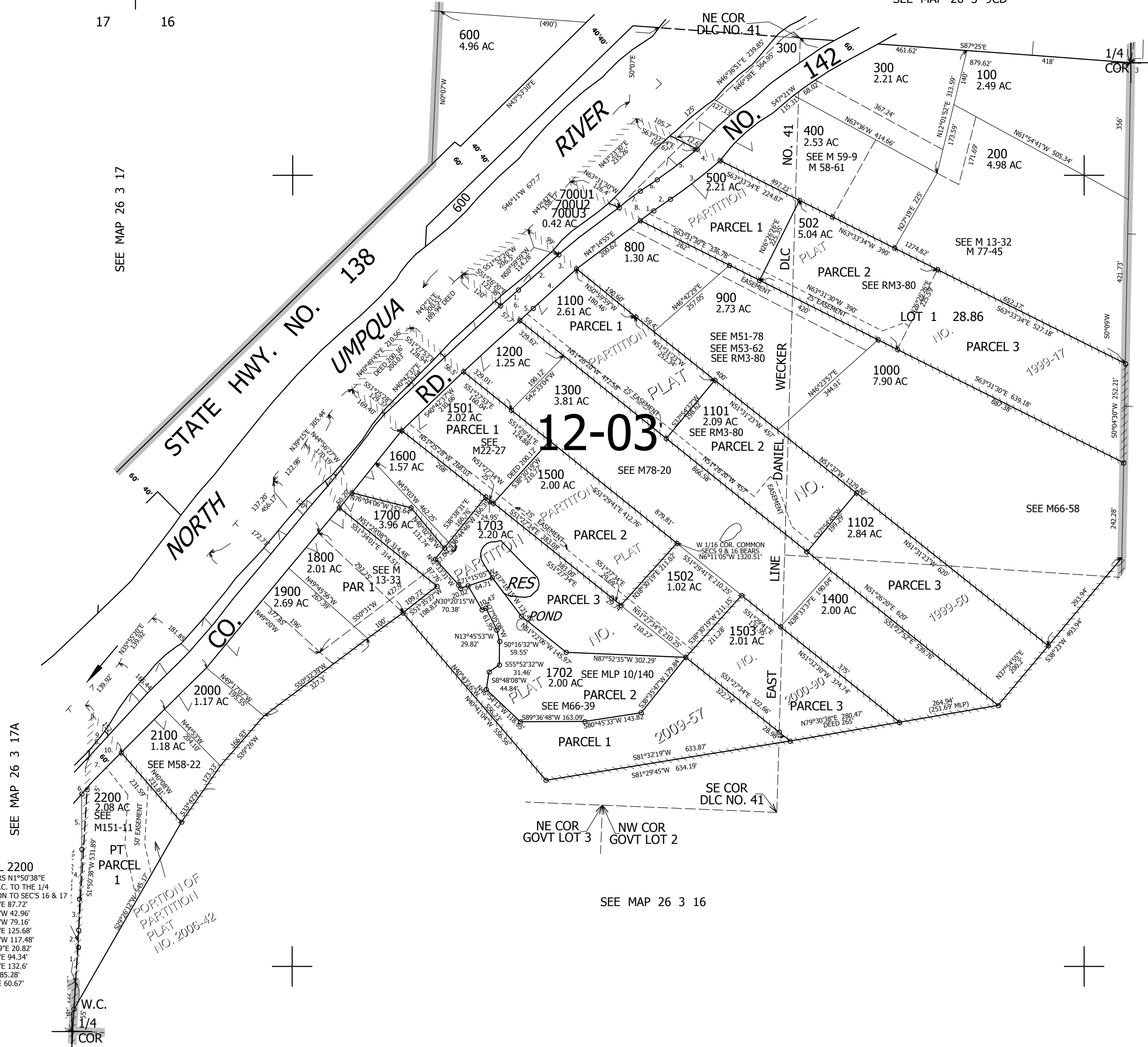
1" = 200'

CANCELLED NOS 1701 501 2201

8 9  
17 16

SEE MAP 26 3 9

SEE MAP 26 3 9CD



- PP 1999-17
- R=462.78'
  - LC=52°58'15"E 41.26'
  - N55°31'35"E 51.52'
  - R=1283.89'
  - LC=N51°58'56"E 158.72'
  - N63°33'34"W 64.97'
  - R=1223.89'
  - LC=S52°33'07"W 127'
  - S55°31'35"W 51.52'
  - R=522.78'
  - LC=S51°31'36"W 72.92'
  - S63°31'30"E 64.92'

- PP 1999-50
- N50°56'19"E 60.2'
  - LC=N48°48'29"E 143.57'
  - L=143.6'
  - S50°59'59"E 60.52'
  - LC=S48°41'30"W 156.11'
  - L=156.15'
  - S50°56'19"W 47.03'
  - N51°26'20"E 61.43'

PARCEL 2200  
 P.O. B. BEARS N1°50'38"E  
 68.15' FR W.C. TO THE 1/4  
 COR COMMON TO SEC'S 16 & 17

- N3°12'12"E 87.72'
- N0°55'57"W 42.96'
- N0°00'47"W 79.16'
- N1°07'44"E 125.68'
- N2°30'58"W 117.48'
- N40°43'09"E 20.82'
- N1°50'38"E 94.34'
- N1°50'38"E 132.6'
- S40°08'E 85.28'
- S40°08'E 60.67'

SEE MAP 26 3 17A

SEE MAP 26 3 17

SEE MAP 26 3 16

SEE MAP 26 3 16

609,000

4,240,000

26 3 16B