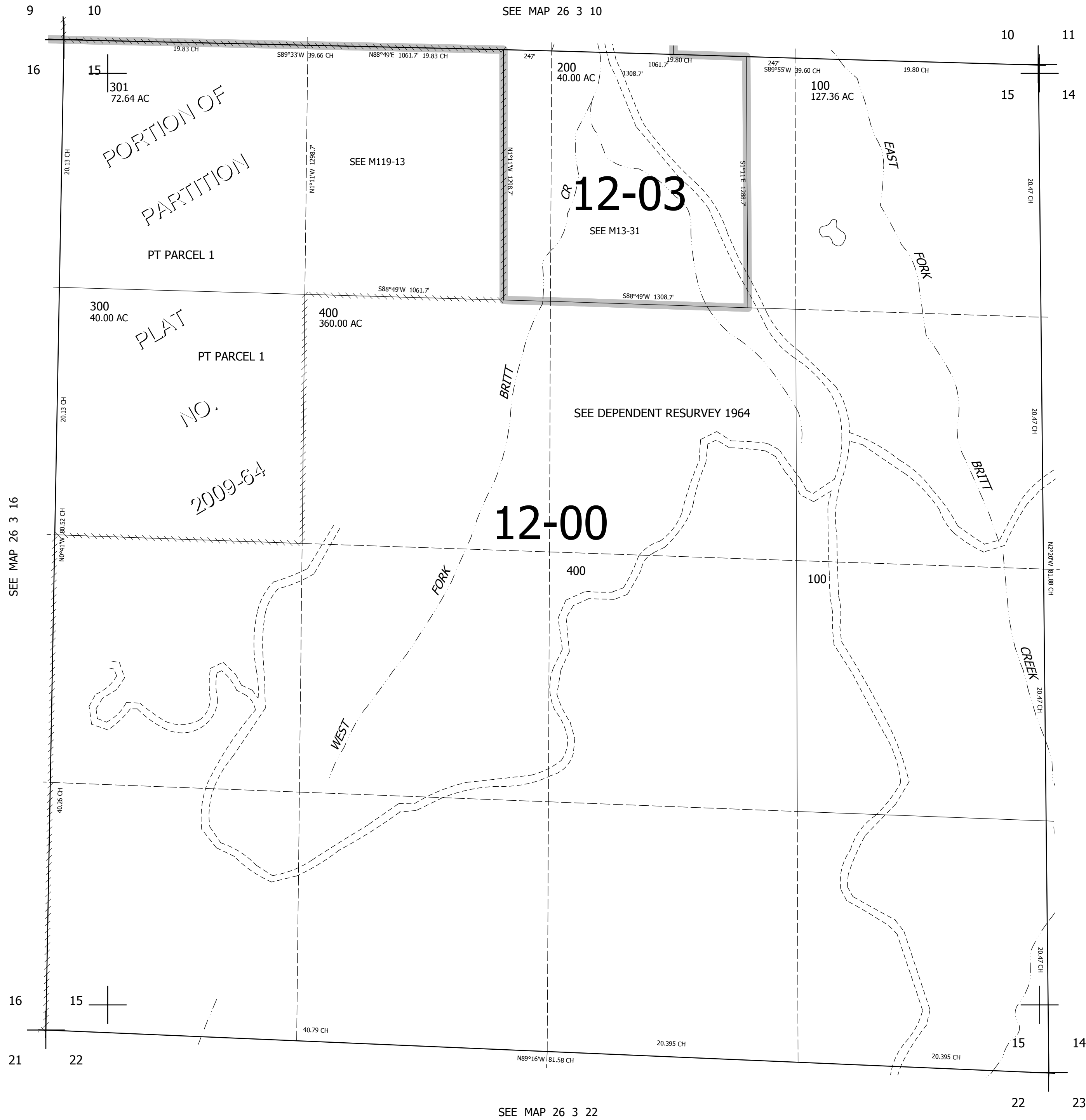


THIS MAP WAS PREPARED FOR  
ASSESSMENT PURPOSE ONLY.

SEC.15 T.26S. R.3W. W.M.  
DOUGLAS COUNTY  
1" = 400'

REVISED ON  
2-18-20

26 3 15



CANCELLED NOS

SEE MAP 26 3 00

606,000

4,248,000

26 3 15