

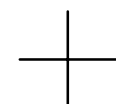
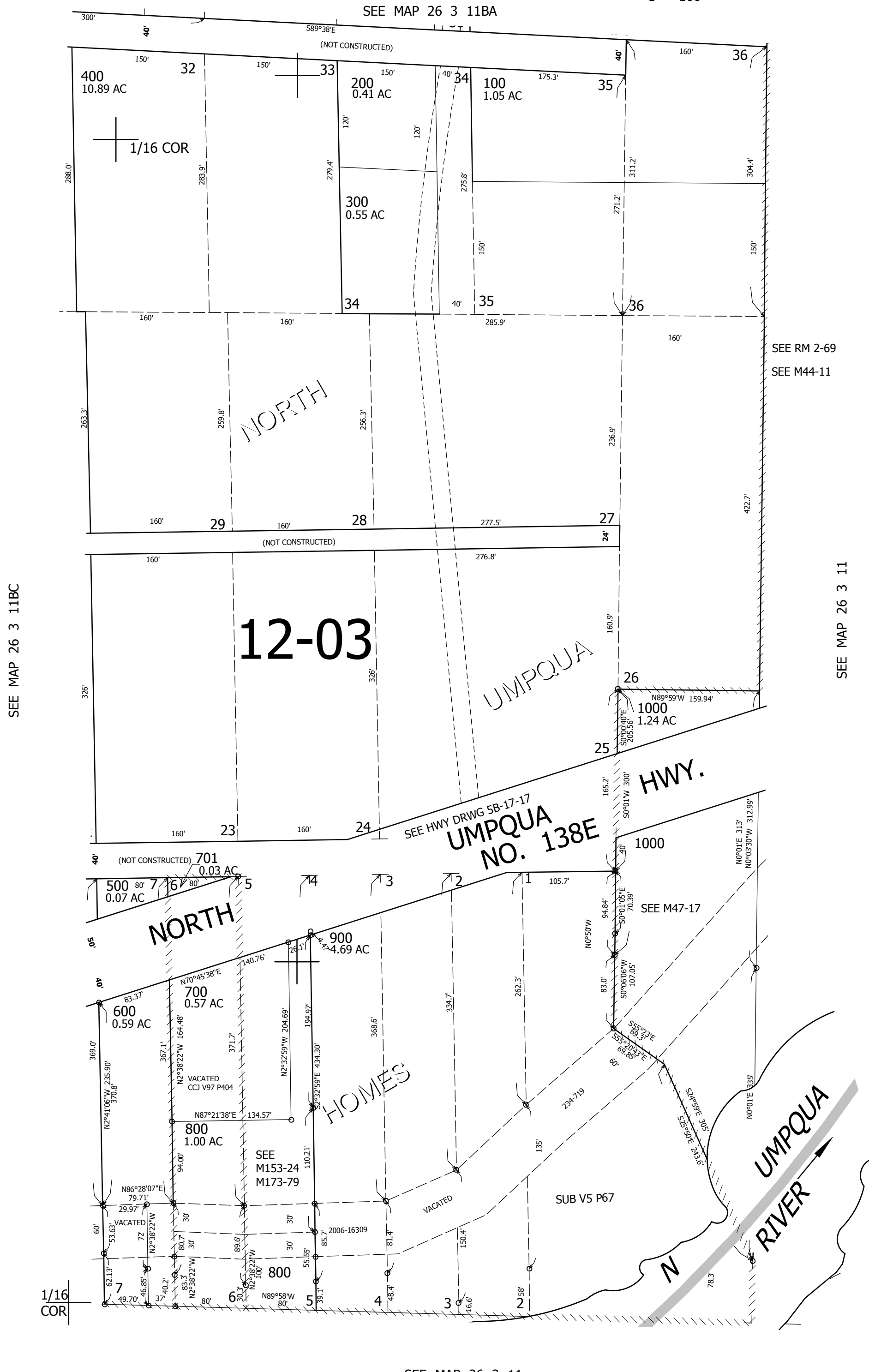
THIS MAP WAS PREPARED FOR ASSESSMENT PURPOSE ONLY.

SE1/4 NW1/4 SEC.11 T.26S. R.3W. W.M.
DOUGLAS COUNTY

REVISED ON
9-12-19

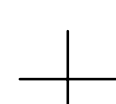
26 3 11BD

1" = 100'



1/16 COR

CANCELLED NOS
601 702



614,000

CEN SEC

4,250,500

26 3 11BD

SEE MAP 26 3 11