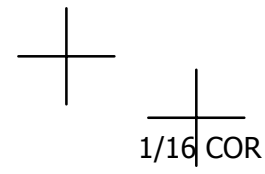


THIS MAP WAS PREPARED FOR
ASSESSMENT PURPOSE ONLY.

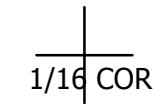
SW1/4 NW1/4 SEC.11 T.26S. R.3W. W.M.
DOUGLAS COUNTY
1" = 100'

REVISED ON
12-3-20

26 3 11BC



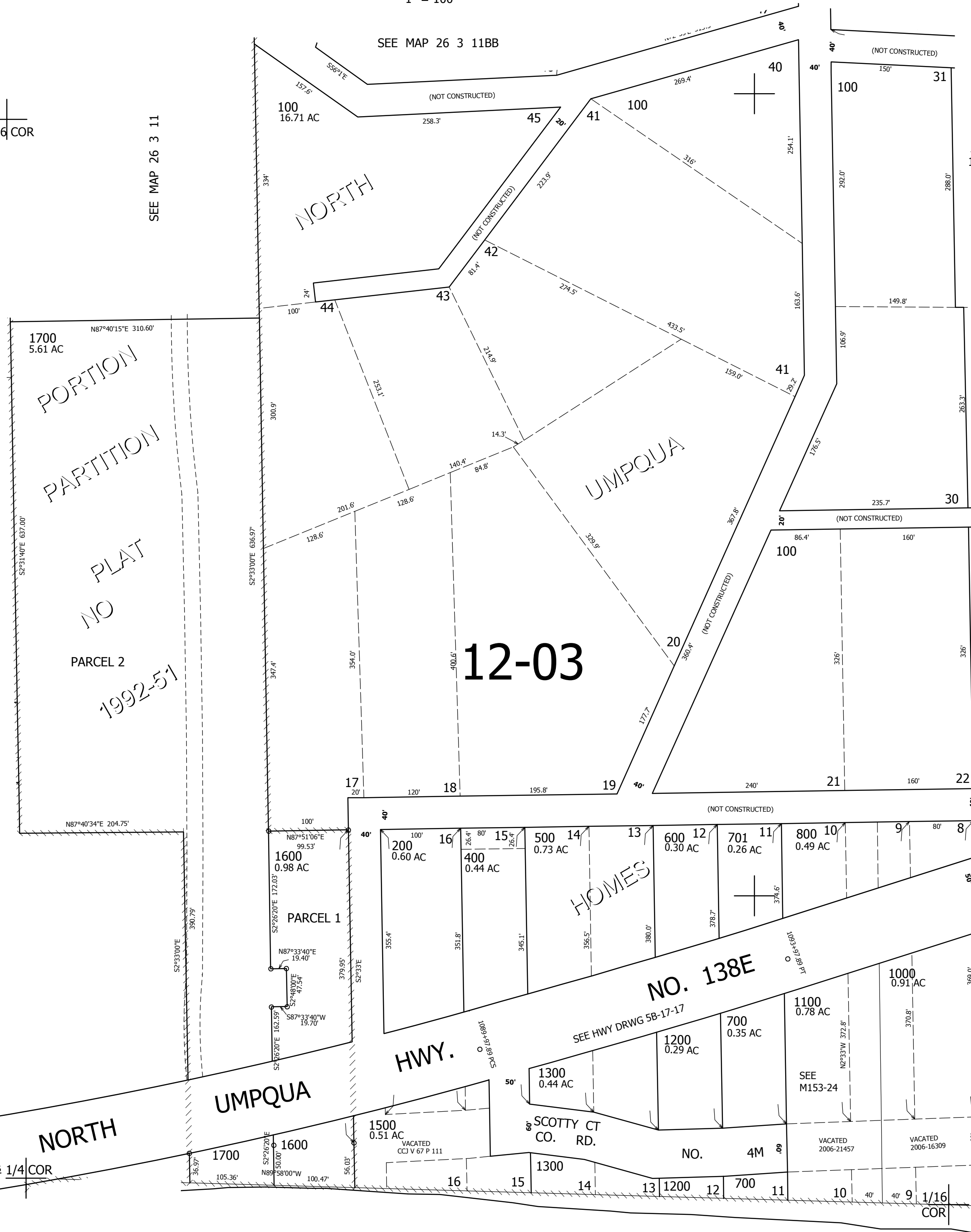
SEE MAP 26 3 11



CANCELLED NOS
900 1400 300

SEE MAP 26 3 10A

SEE MAP 26 3 11BD



12-03

614,000

SEE MAP 26 3 11

NORTH

UMPOUA

4,249,000

RIVER

26 3 11BC