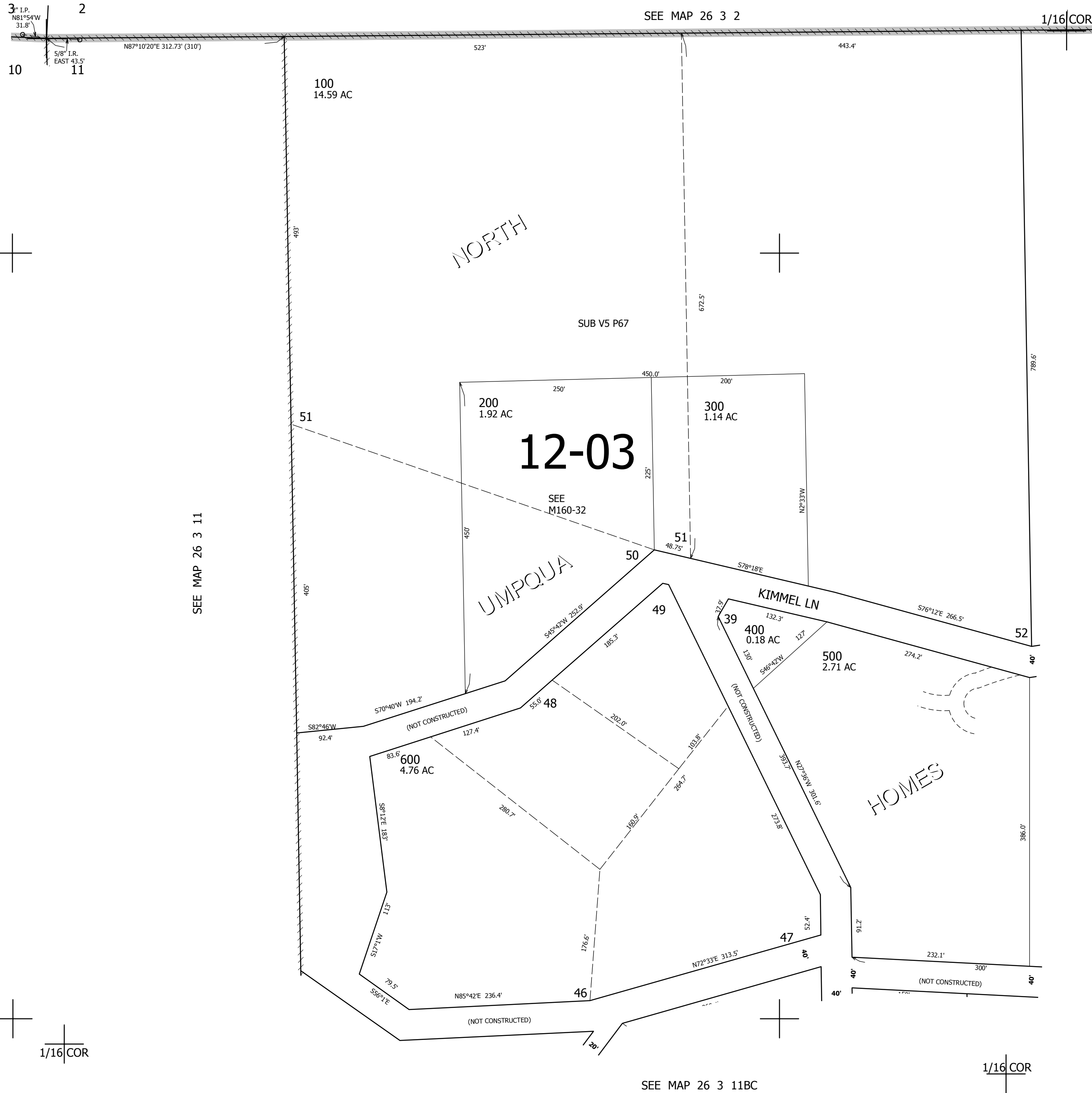


THIS MAP WAS PREPARED FOR ASSESSMENT PURPOSE ONLY.

NW1/4 NW1/4 SEC.11 T.26S. R.3W. W.M.
DOUGLAS COUNTY
1" = 100'

REVISED ON
8-22-19

26 3 11BB



CANCELLED NOS

SEE MAP 26 3 11BA

615,000

SEE MAP 26 3 11BC

4,249,000

26 3 11BB