

THIS MAP WAS PREPARED FOR ASSESSMENT PURPOSE ONLY.

NE1/4 NW1/4 SEC.11 T.26S. R.3W. W.M.
DOUGLAS COUNTY

1" = 100'

REVISED ON
8-22-19

26 3 11BA

SEE MAP 26 3 2

SEE MAP 26 3 11BB

SEE MAP 26 3 11

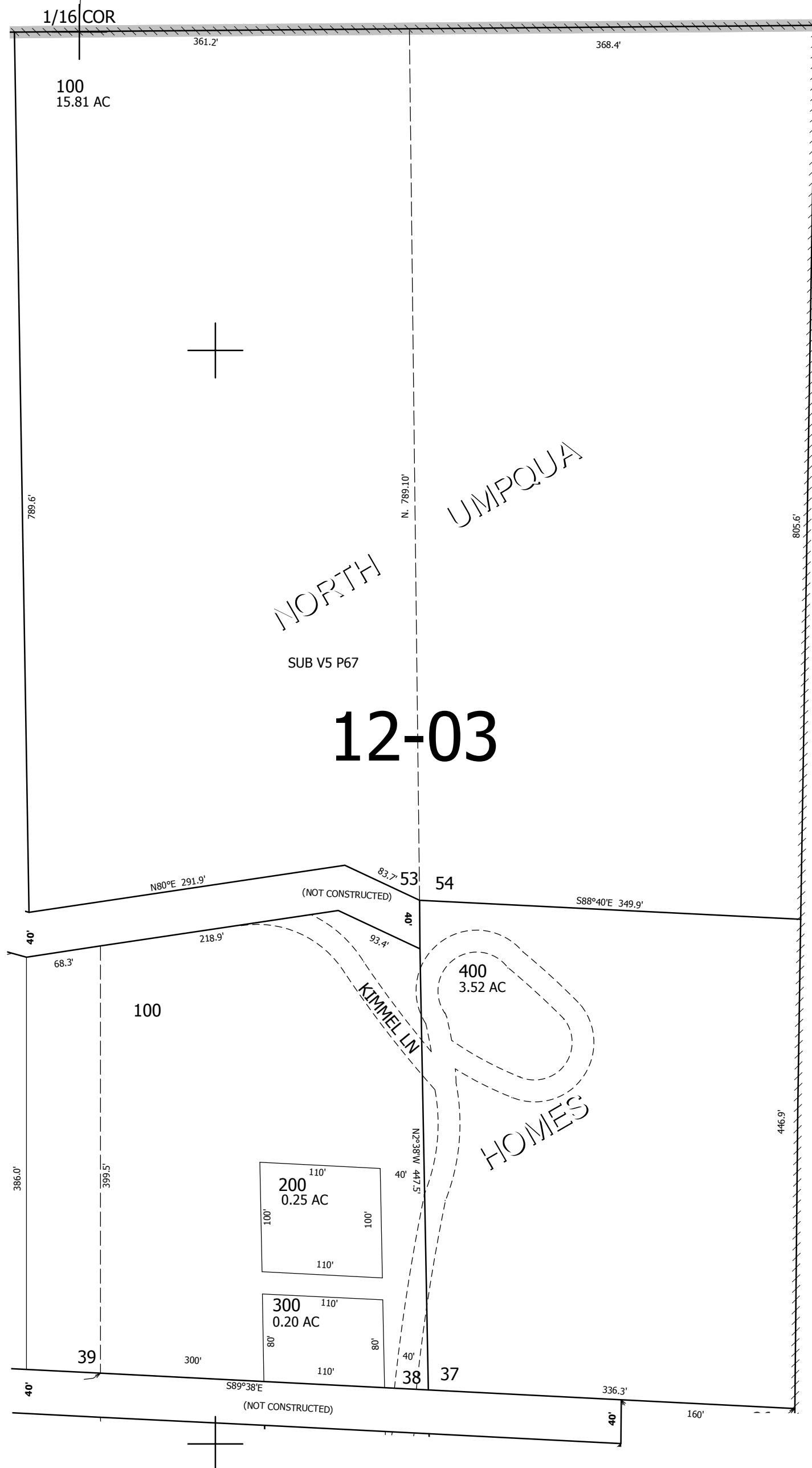
1/16 COR

SEE MAP 26 3 11BD

1/16 COR

4,250,000

26 3 11BA



1/4 COR

CANCELLED NOS

615,000