

THIS MAP WAS PREPARED FOR ASSESSMENT PURPOSE ONLY.

Upper Left:
123°1'20"W 43°19'37"N
4250273E 615230N ft

SW1/4 NE1/4 SEC.11 T.26S. R.03W. W.M.
DOUGLAS COUNTY
1" = 100'

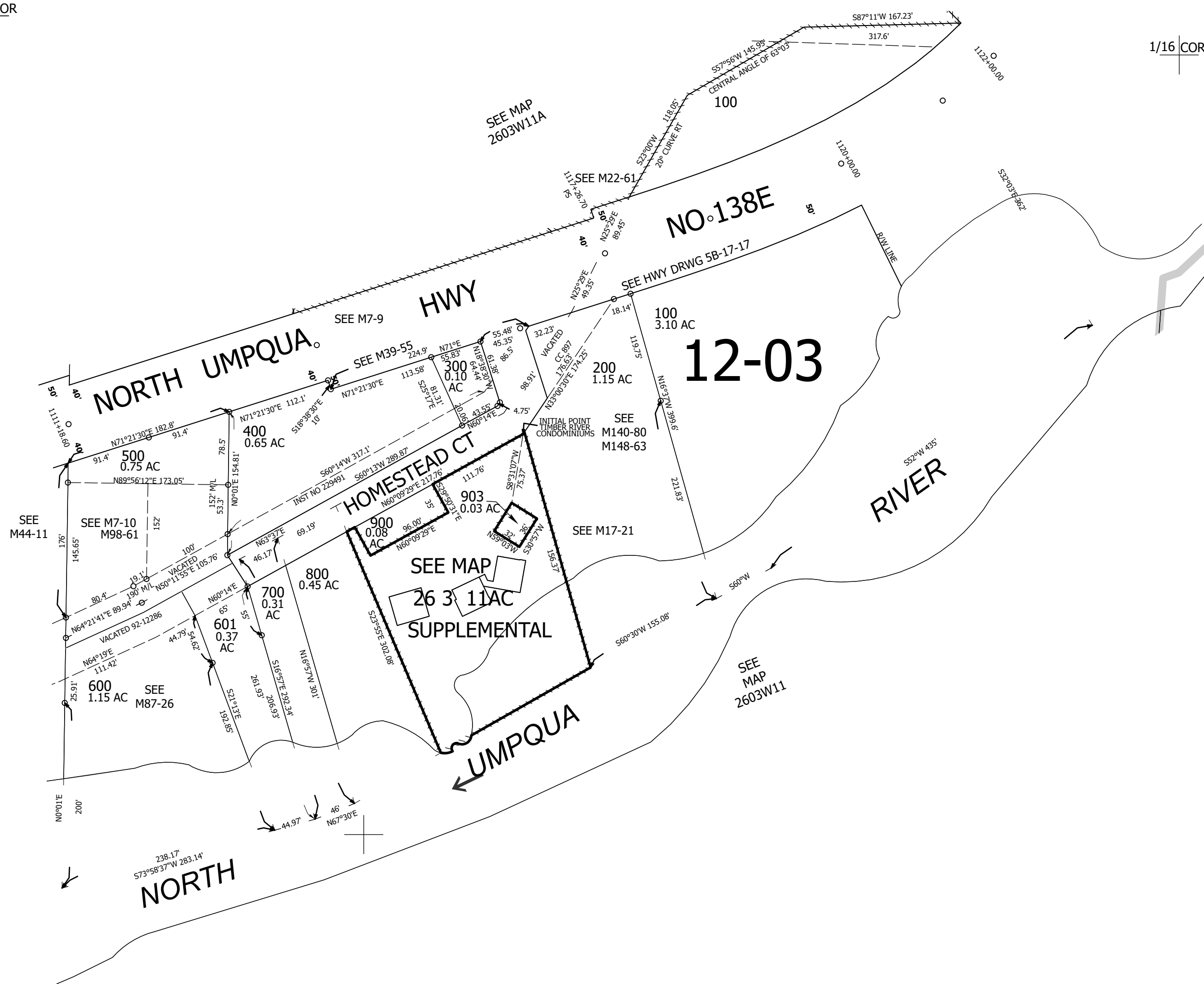
Date Exported 2025-09-16

260311AC

CANCELLED NOS:
901 902

1/16 COR

1/16 COR



CEN SEC

1/16 COR

260311AC

Lower Right:
123°0'53"W 43°19'21"N
4252248E 613491N ft

THIS MAP WAS PREPARED FOR ASSESSMENT PURPOSE ONLY.

Upper Left:
123°1'14"W 43°19'32"N
4250663E 614666N ft

SUPPLEMENTAL SW1/4 NE1/4 SEC.11 T.26S. R.03W. W.M.
DOUGLAS COUNTY
1" = 50'

Date Exported 2025-09-16

260311ACSUPP

CANCELLED NOS:

- UNIT 1
- S26°26'56"E 24.25'
 - N63°33'04"E 0.50'
 - S26°26'56"E 6.40'
 - S63°33'04"W 35.12'
 - N26°26'56"W 19.40'
 - N63°33'04"E 2.00'
 - N26°26'56"W 11.25'
- INITIAL POINT OF TIMBER RIVER CONDOMINIUMS BEARS N23°40'E 185.27'
- N63°33'04"E 32.62'

- UNIT 2
- N63°33'33"E 6.60'
 - S26°26'39"E 7.20'
 - S80°53'20"E 6.25'
 - N9°06'40"E 27.26'
- INITIAL POINT OF TIMBER RIVER CONDOMINIUMS BEARS N10°54'20"E 134.69'
- S80°53'20"E 24.25'
 - N9°06'40"E 0.50'
 - S80°53'20"E 6.40'
 - S9°06'40"W 35.16'
 - N80°53'20"W 40.08'
 - N26°27'19"W 10.97'

- UNIT 3
- N73°00'00"E 36'
- INITIAL POINT OF TIMBER RIVER CONDOMINIUMS BEARS N32°42'39"E 199.37'
- S17°00'00"E 32'
 - S73°00'00"W 36'
 - N17°00'00"W 32'

