

THIS MAP WAS PREPARED FOR ASSESSMENT PURPOSE ONLY.

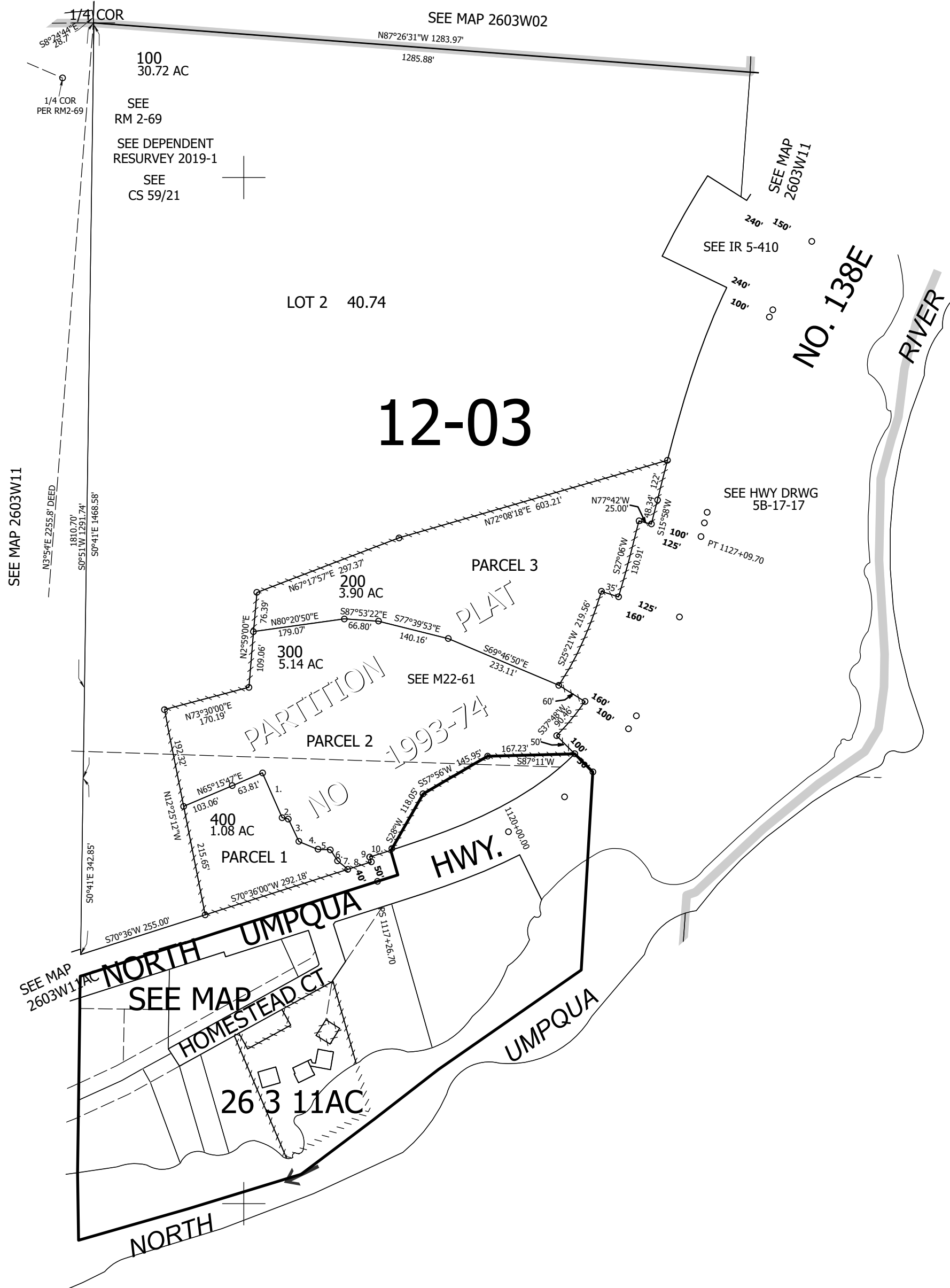
Upper Left:
123°1'31"W 43°19'54"N
4249535E 616881N ft

NE1/4 SEC.11 T.26S. R.03W. W.M.
DOUGLAS COUNTY
1" = 200'

Date Exported 2025-09-17

CANCELLED NOS:

- PARCEL 300
1. S25°33'55"E 95.35'
 2. S79°40'36"E 12.38'
 3. S26°49'39"E 484.33'
 4. S69°18'35"E 40.35'
 5. S89°06'10"E 24.15'
 6. S34°35'15"E 25.14'
 7. S52°09'03"E 26.52'
 8. S70°36'00"W 47.65'
 9. S19°29'47"E 10.11'
 10. S64°09'51"W 49.98'



21
11 12

CEN SEC

1/4 COR

Lower Right:
123°0'36"W 43°19'19"N
4253461E 613281N ft