

THIS MAP WAS PREPARED FOR ASSESSMENT PURPOSE ONLY.

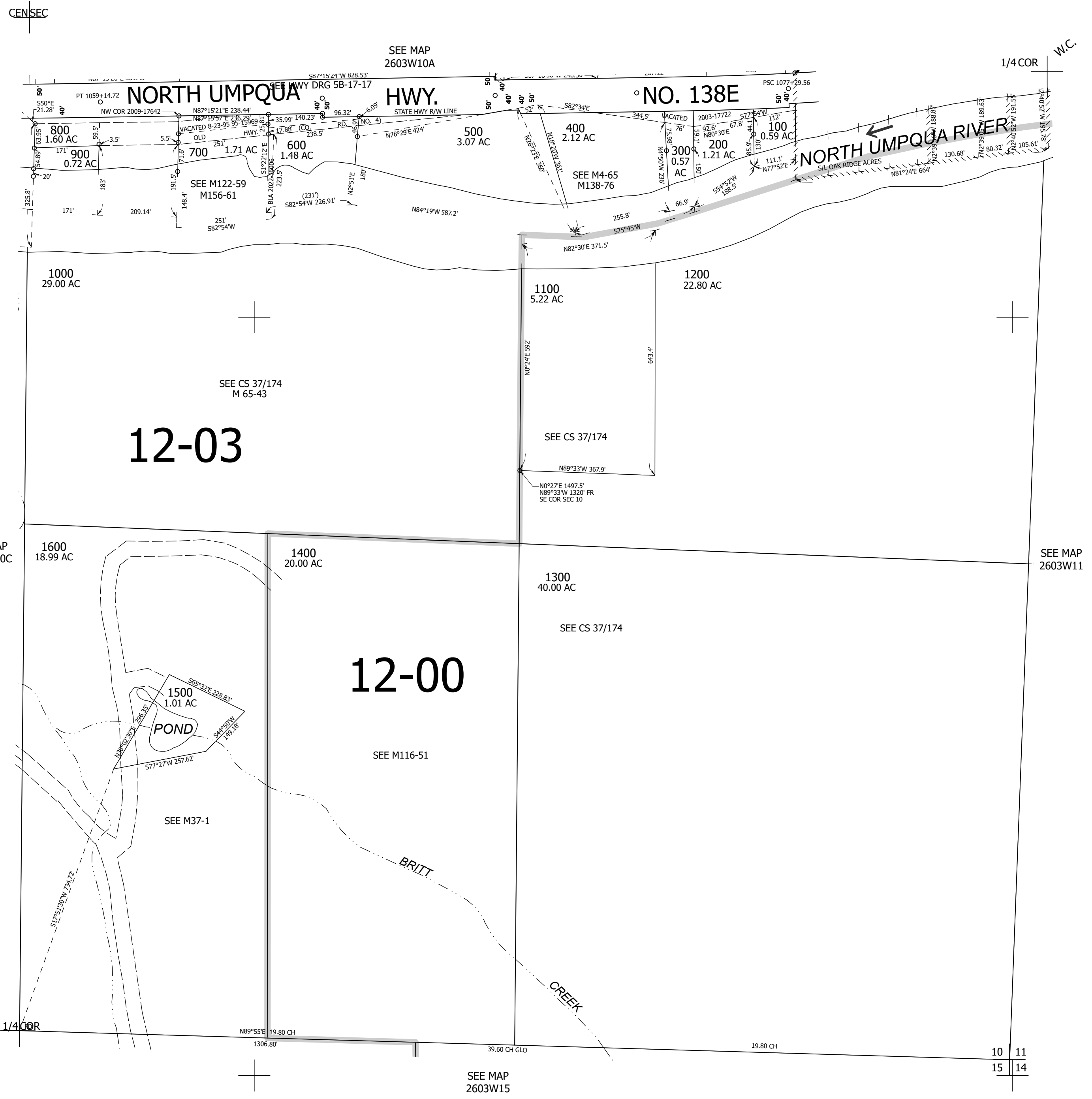
Upper Left:
123°2'34"W 43°19'25"N
4244768E 614104N ft

SE1/4 SEC.10 T.26S. R.03W. W.M.
DOUGLAS COUNTY
1" = 200'

Date Exported: 3/13/2023 1:13 PM

2603W10D
&

CANCELLED NOS:
1300M1 601 701



Lower Right:
123°1'40"W 43°18'51"N
4248647E 610567N ft

2603W10D
&