

THIS MAP WAS PREPARED FOR ASSESSMENT PURPOSE ONLY.

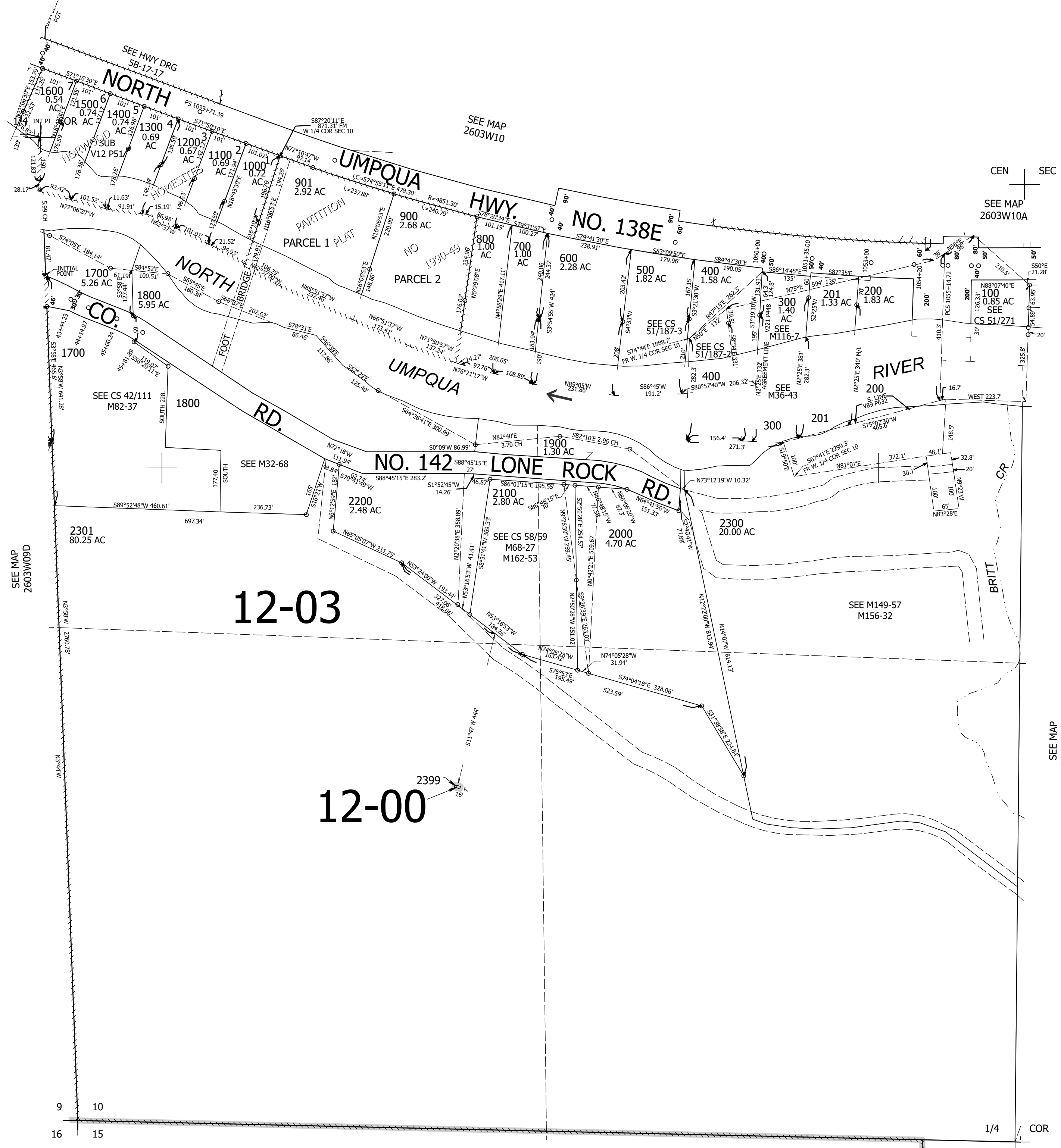
Upper Left:
123°3'11"W 43°19'27"N
4242058E 614442N ft

SW1/4 SEC.10 T.26S. R.03W. W.M.
DOUGLAS COUNTY
1" = 200'

Date Exported 2024-08-15

260310C

CANCELLED NOS:
2101 2102 2103
2001



12-03

12-00

9 10
16 15

1/4 COR

SEE MAP
2603W15

260310C

Lower Right:
123°2'16"W 43°18'54"N
4245983E 610964N ft