

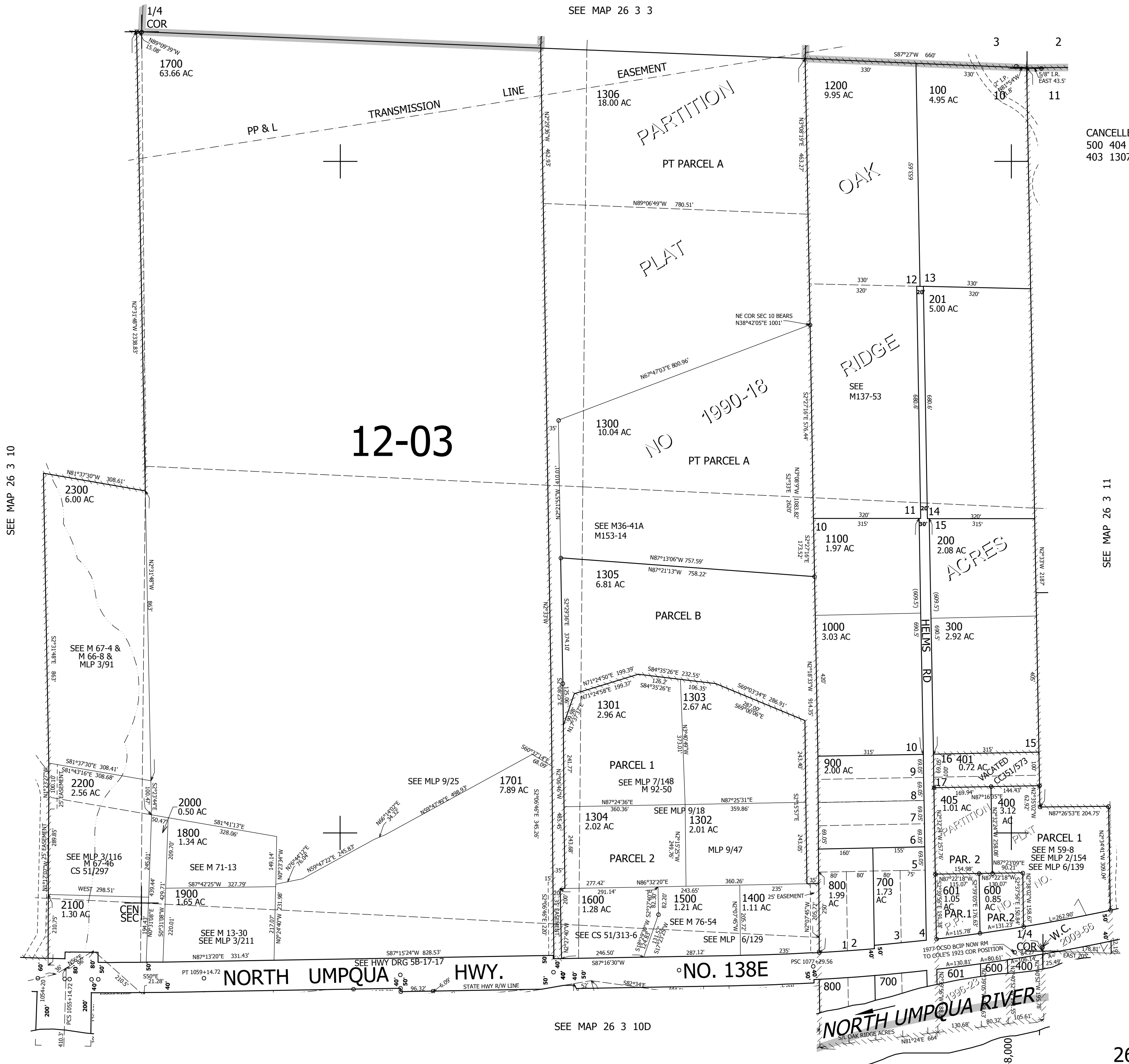
THIS MAP WAS PREPARED FOR ASSESSMENT PURPOSE ONLY.

NE1/4 SEC.10 T.26S. R.3W. W.M.
DOUGLAS COUNTY

1" = 200'

REVISED ON
8-21-19

26 3 10A



CANCELLED NOS
500 404 402
403 1307 1702

SEE MAP 26 3 10

SEE MAP 26 3 11

SEE MAP 26 3 11BC

614,000

SEE MAP 26 3 10D

26 3 10A

NORTH UMPQUA RIVER
1995-23
OAK RIDGE ACRES
130.68'
80.32'
105.61'
80.32'
130.68'
N81°24'E 664'