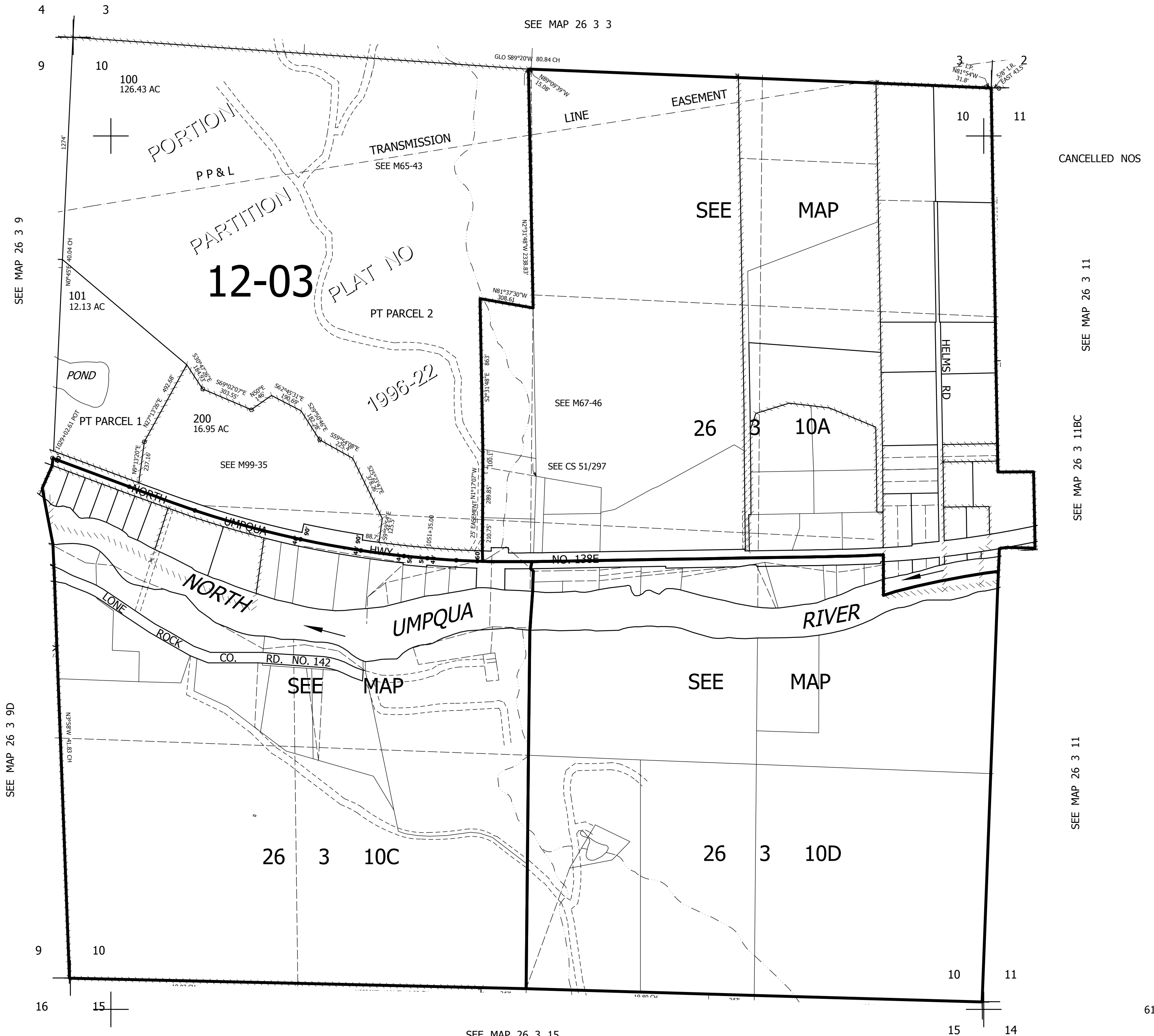


THIS MAP WAS PREPARED FOR
ASSESSMENT PURPOSE ONLY.

SEC.10 T.26S. R.3W. W.M.
DOUGLAS COUNTY
1" = 400'

REVISED ON
8-20-19

26 3 10
& INDEX



CANCELLED NOS

SEE MAP 26 3 11

SEE MAP 26 3 11BC

SEE MAP 26 3 11

26 3 10
& INDEX