

THIS MAP WAS PREPARED FOR ASSESSMENT PURPOSE ONLY.

SE1/4 SEC.9 T.26S. R.3W. W.M. DOUGLAS COUNTY

REVISED ON 12-8-20

26 3 9D

SEE MAP 26 3 9

1" = 200'

SEE MAP 26 3 9

SEE MAP 26 3 9

SEE MAP 26 3 9CD

CANCELLED NOS 2200 300M1 1903 401 1701

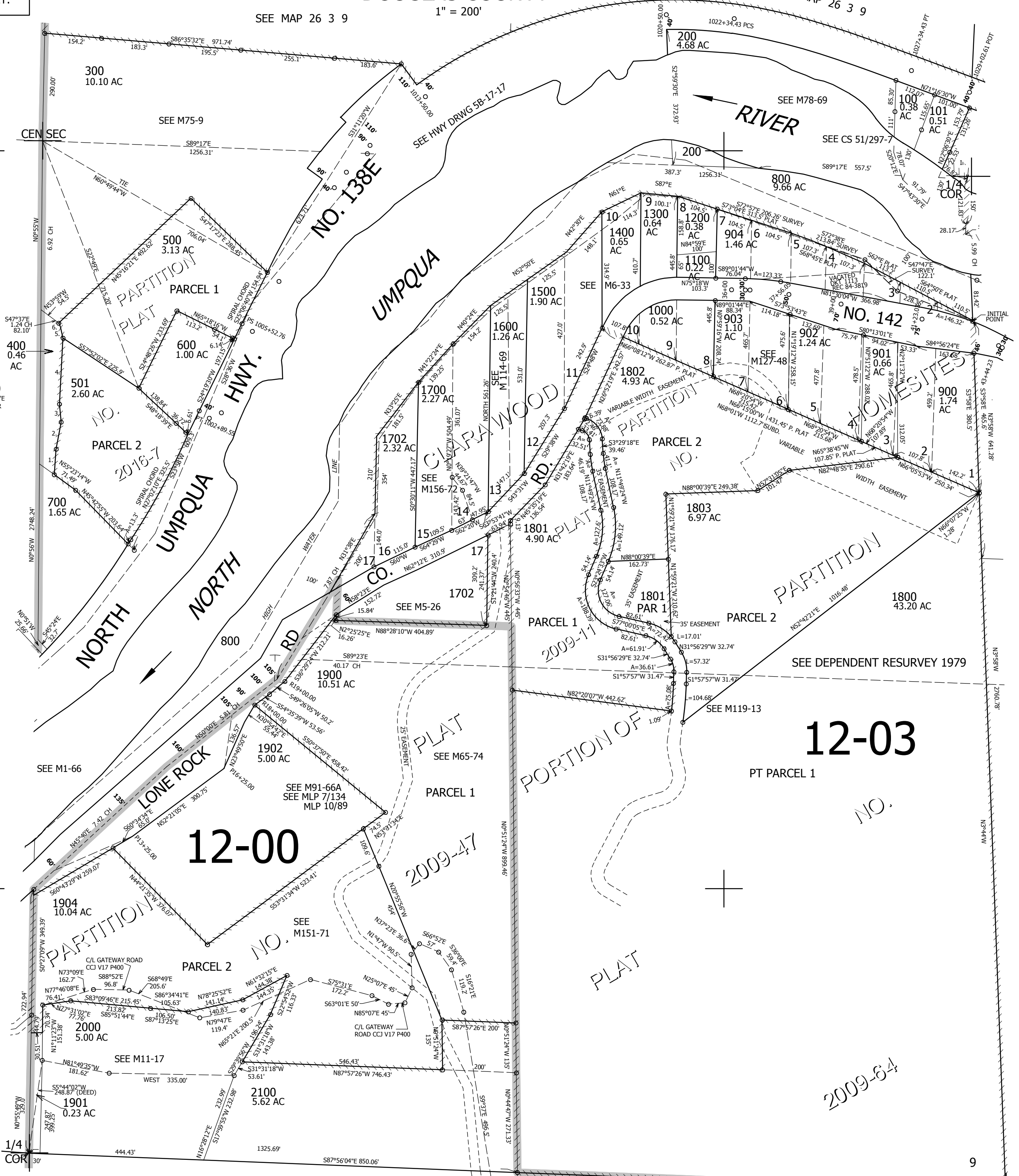
SEE MAP 26 3 10C

612,500

SEE MAP 26 3 16

4,242,000

26 3 9D



**PARCEL 400**  
 P.O.B. BEARS N3°53'33"E  
 476.17' FR CS 1/16 COR  
 1. N2°53'12"E 69.4'  
 2. N9°18'22"E 74.51'  
 3. N7°06'33"W 48.86'  
 4. N1°45'14"E 179.35'  
 5. N1°42'50"W 30.67'  
 6. N26°02'49"W 11.79'

12-00

12-03

NORTH UMPQUA HWY.

NO. 138E

CLARA WOOD RD.

PARCEL 1

PARCEL 2

LONE ROCK RD.

2009-47

PORTION OF

2009-64

1/4 COR

9

10

16

15