

THIS MAP WAS PREPARED FOR ASSESSMENT PURPOSE ONLY.

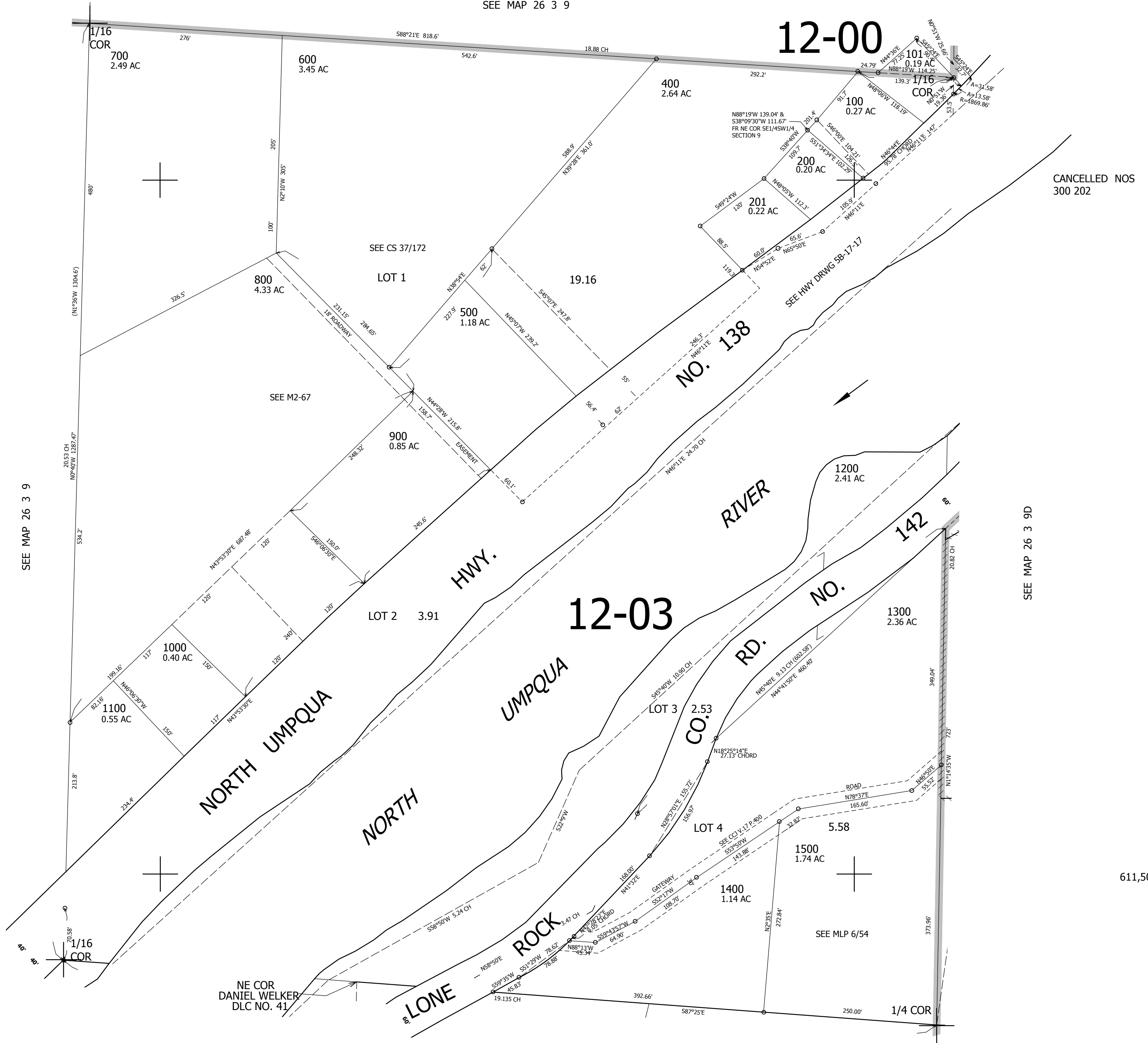
SE1/4 SW1/4 SEC.9 T.26S. R.3W. W.M.  
DOUGLAS COUNTY

REVISED ON  
5-16-17

26 3 9CD

1" = 100'

SEE MAP 26 3 9



SEE MAP 26 3 9

SEE MAP 26 3 9D

SEE MAP 26 3 16B

4,238,000

611,500

26 3 9CD