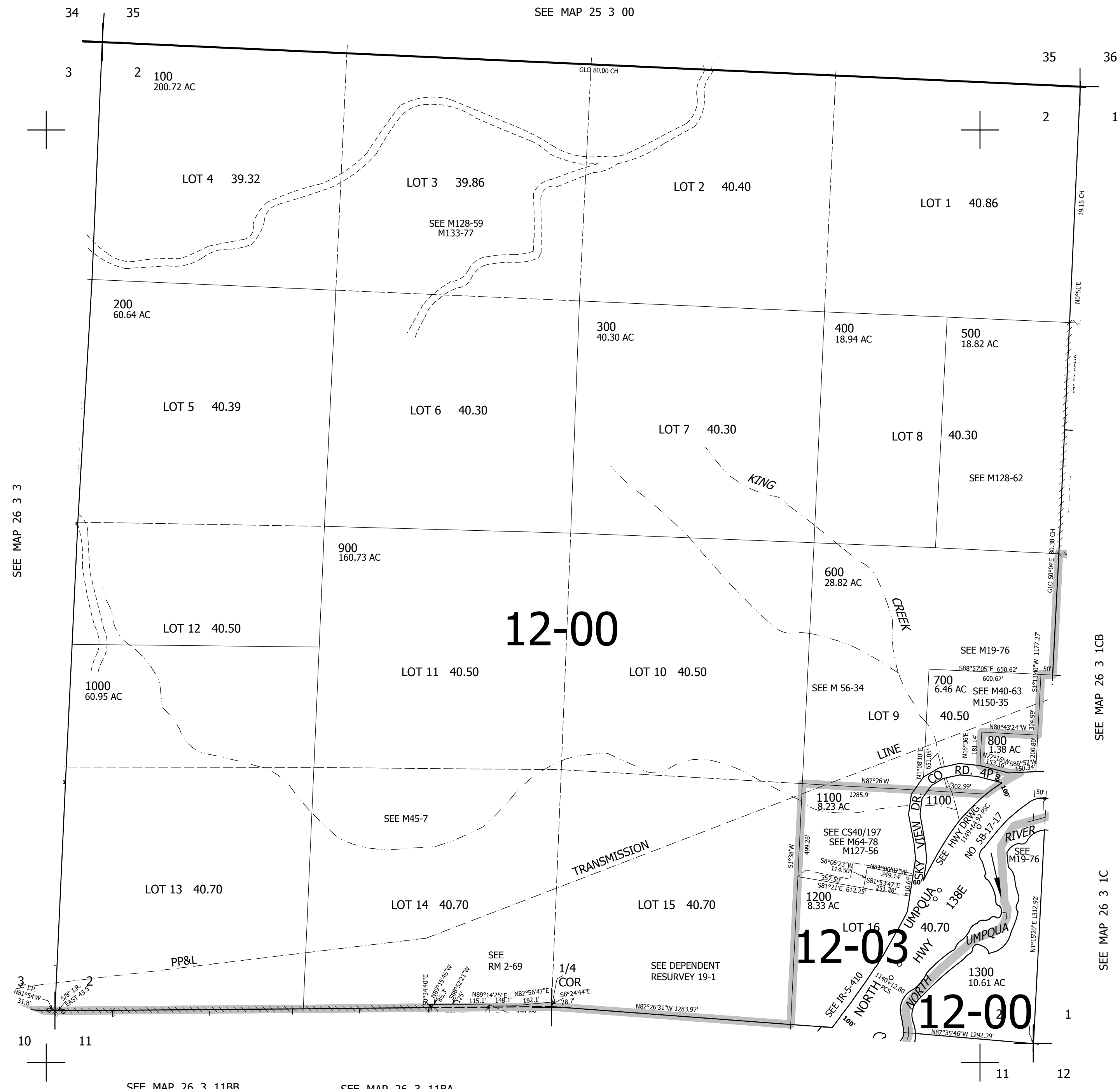


THIS MAP WAS PREPARED FOR ASSESSMENT PURPOSE ONLY.

SEC.2 T.26S. R.3W. W.M. DOUGLAS COUNTY
1" = 400'

REVISED ON 8-14-19

26 3 2



621,000

CANCELLED NOS 1101

SEE MAP 26 3 1

SEE MAP 26 3 1CB

SEE MAP 26 3 1C

SEE MAP 26 3 3

SEE MAP 26 3 11BB

SEE MAP 26 3 11BA

SEE MAP 26 3 11A

SEE MAP 26 3 11

4,253,000

26 3 2