

THIS MAP WAS PREPARED FOR ASSESSMENT PURPOSE ONLY.

SW1/4 SEC.1 T.26S. R.3W. W.M.
DOUGLAS COUNTY
1" = 200'

REVISED ON
5-26-21

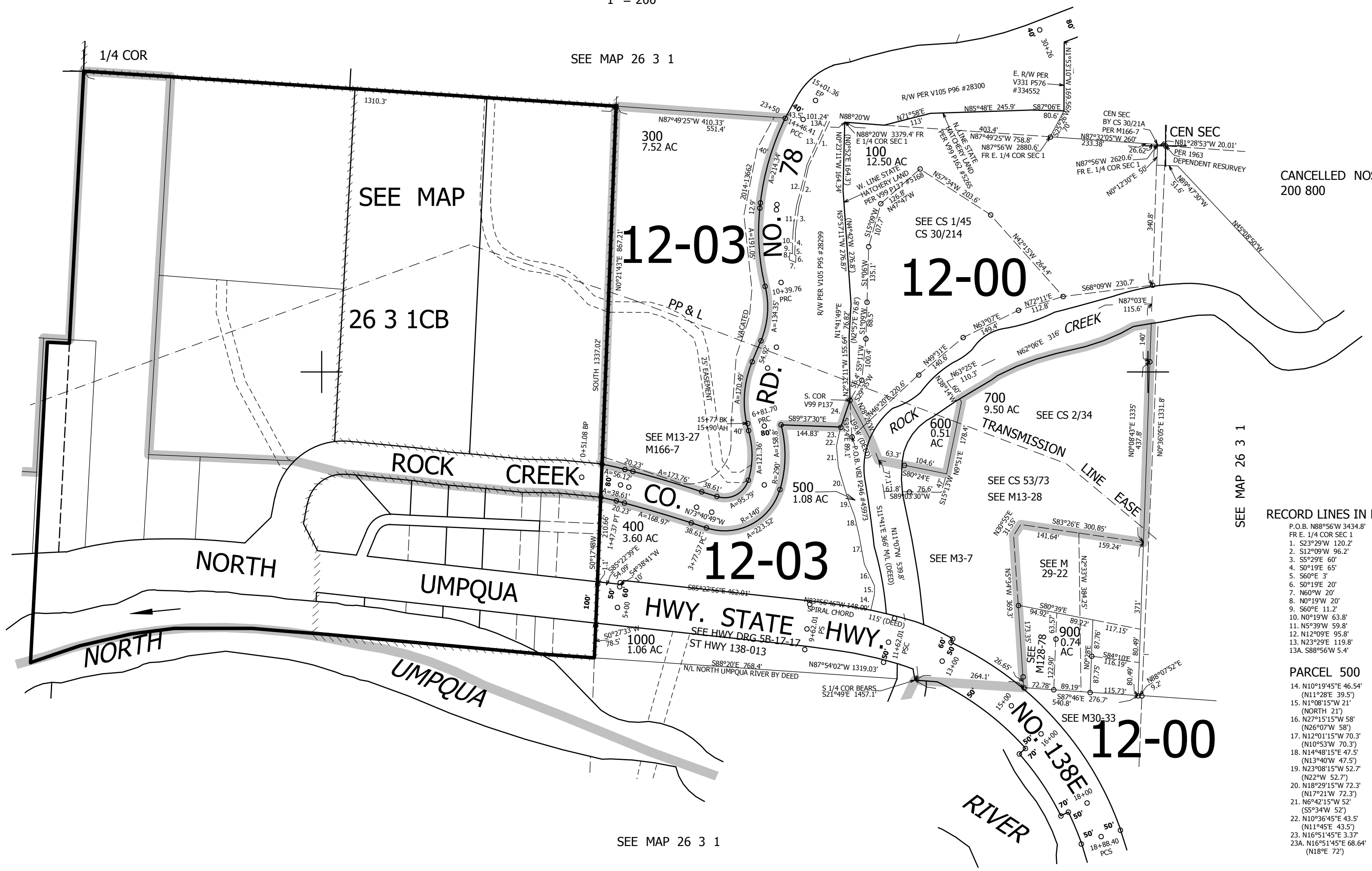
26 3 1C
& INDEX

SEE MAP 26 3 2

SEE MAP 26 3 1

SEE MAP 26 3 1

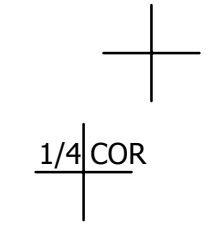
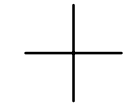
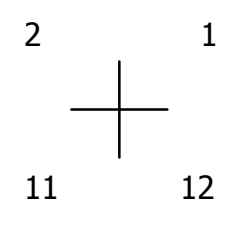
SEE MAP 26 3 1



CANCELLED NOS
200 800

- RECORD LINES IN R/W
1. S23°29'W 120.2'
 2. S12°09'W 96.2'
 3. S5°29'E 60'
 4. S0°19'E 65'
 5. S60°E 3'
 6. S0°19'E 20'
 7. N60°W 20'
 8. N0°19'W 20'
 9. S60°E 11.2'
 10. N0°19'W 63.8'
 11. N5°39'W 59.8'
 12. N12°09'E 95.8'
 13. N23°29'E 119.8'
 - 13A. S88°56'W 5.4'

- PARCEL 500
14. N10°19'45"E 46.54'
 - (N11°28'E 39.5')
 - (NORTH 21')
 16. N27°15'15"W 58'
 - (N26°07'W 58')
 17. N12°01'15"W 70.3'
 - (N10°53'W 70.3')
 18. N14°48'15"E 47.5'
 - (N13°40'W 47.5')
 19. N23°08'15"W 52.7'
 - (N22°W 52.7')
 20. N18°29'15"W 72.3'
 - (N17°21'W 72.3')
 21. N6°42'15"W 52'
 - (S5°34'W 52')
 22. N10°36'45"E 43.5'
 - (N11°45'E 43.5')
 23. N16°51'45"E 3.37'
 - 18+88.40 PCS
 - (N18°E 72')



616,000

4,256,000

26 3 1C
& INDEX