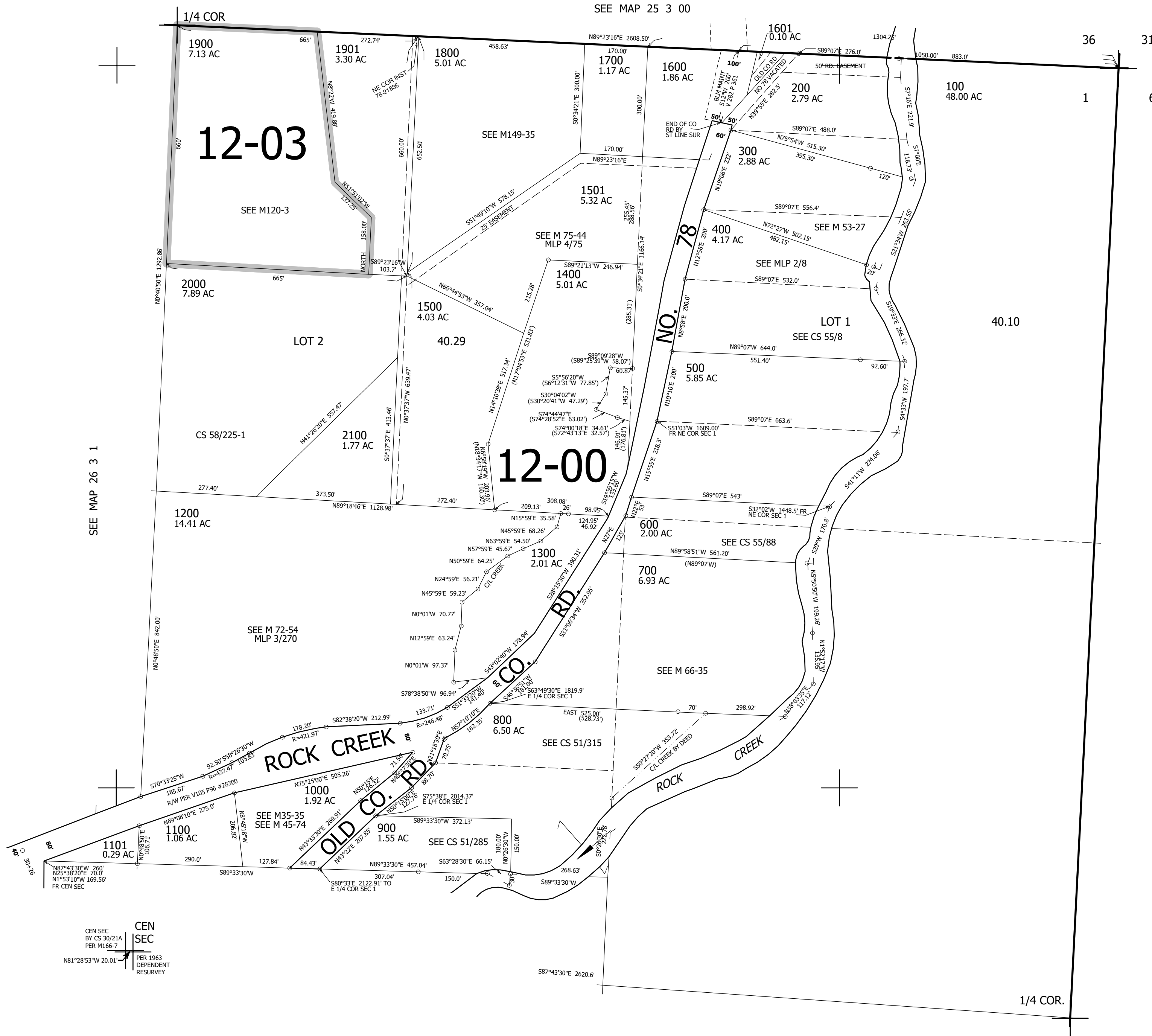


THIS MAP WAS PREPARED FOR ASSESSMENT PURPOSE ONLY.

NE1/4 SEC.1 T.26S. R.3W. W.M.
DOUGLAS COUNTY
1" = 200'

REVISED ON
1-5-22

26 3 1A



CANCELLED NOS
1502 1503

SEE MAP 26 2 00

619,000

CEN SEC
 BY CS 30/21A
 PER M166-7
 N81°28'53"W 20.01'

CEN
 SEC
 PER 1963
 DEPENDENT
 RESURVEY

SEE MAP 26 3 1

4,258,000

26 3 1A