

THIS MAP WAS PREPARED FOR ASSESSMENT PURPOSE ONLY.

T.26S. R.3W. W.M.
DOUGLAS COUNTY

REVISED ON
7-8-09

26 3 00
& INDEX

1" = 2000' SEE MAP 25 3 00

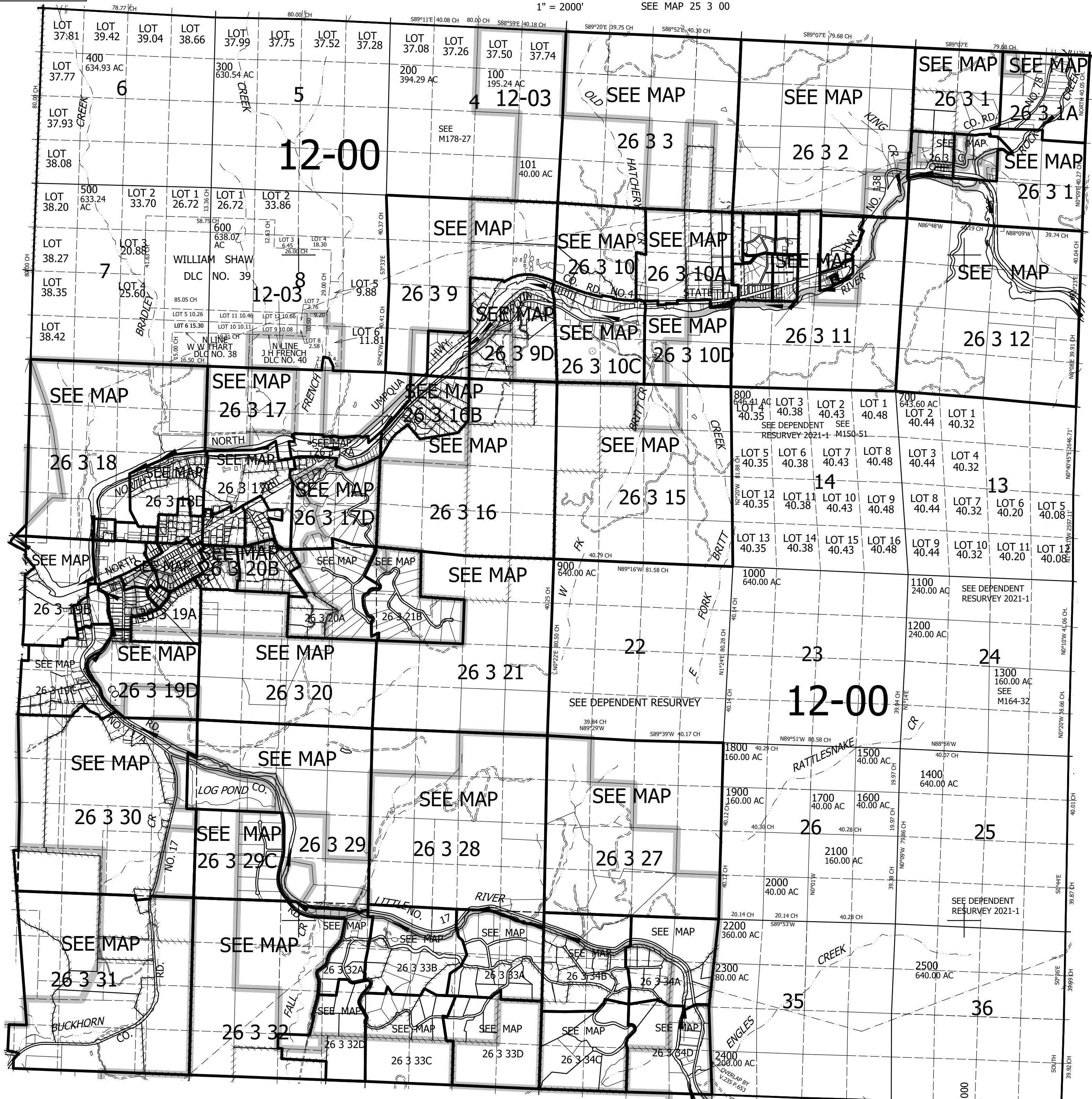
CANCELLED NOS

PARCEL 600
1. NORTH 154.9'
2. N7°16'30"E 251.2'
3. S79°19'30"E 171.7'
4. S27°53'E 266.7'
5. SOUTH 139.7'

SEE MAP 26 2 00

595,000

26 3 00
& INDEX



SEE MAP 26 4 00

SEE MAP 27 3 00

4,255,000