

THIS MAP WAS PREPARED FOR ASSESSMENT PURPOSE ONLY.

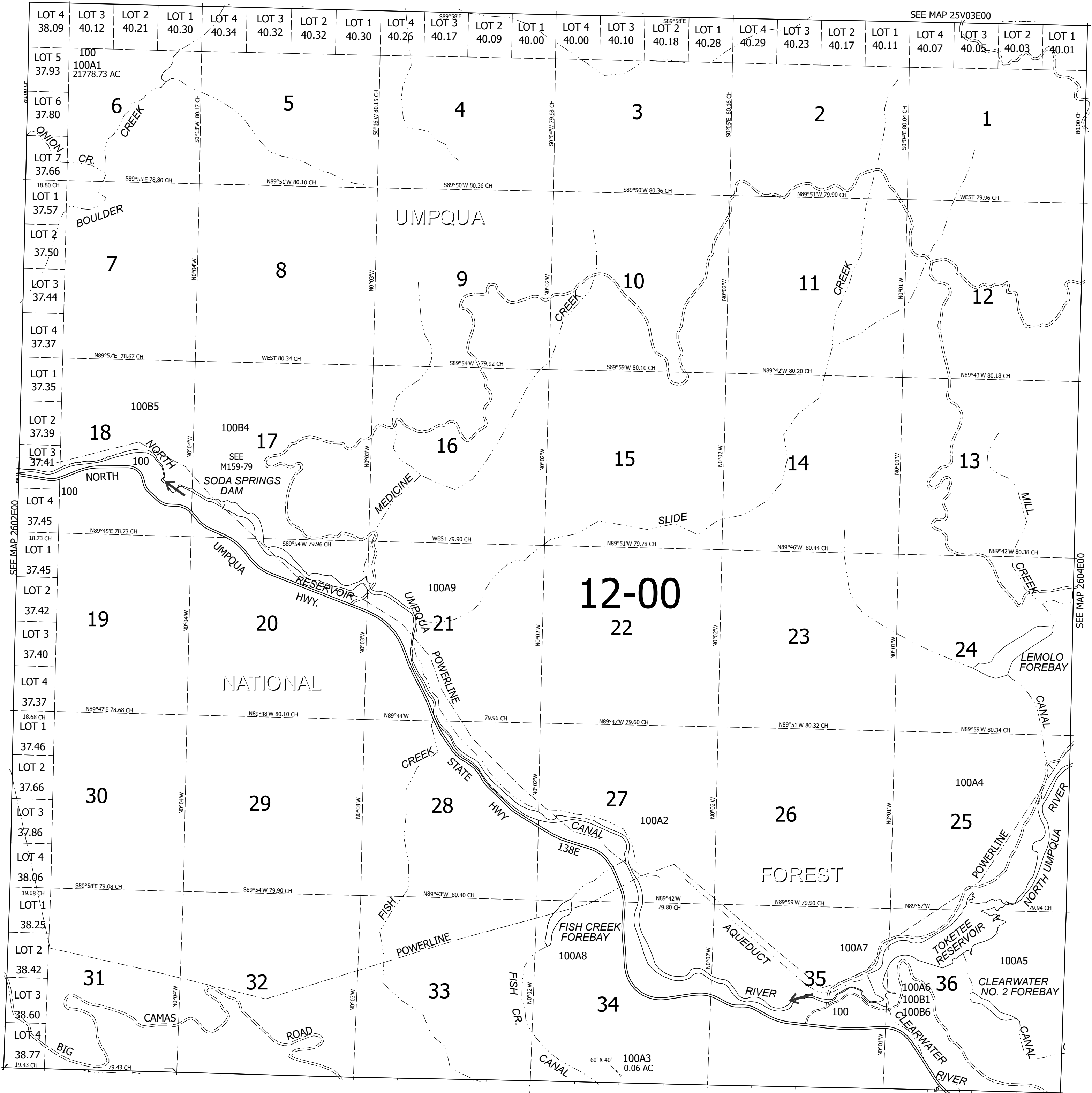
Upper Left:  
122°32'2"W 43°20'46"N  
4380323E 618594N ft

T.26S. R.03E. W.M.  
DOUGLAS COUNTY  
1" = 2000'

Date Exported 2025-08-12

2603E00

CANCELLED NOS:  
100B2 100B3



SEE MAP 2602E00

SEE MAP 2604E00

SEE  
MAP  
2703E00

2603E00

Lower Right:  
122°23'W 43°15'11"N  
4419569E 583818N ft